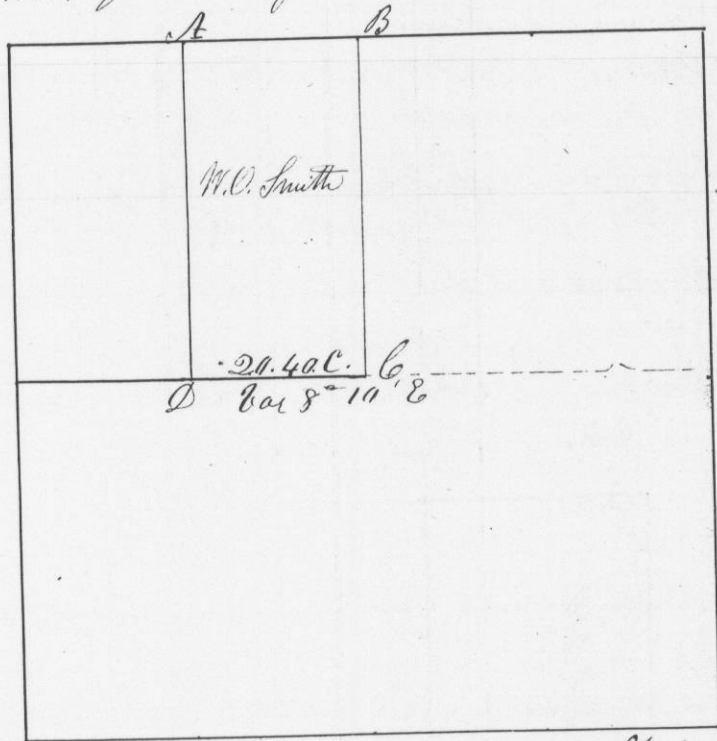


No 523

Survey made for William O Smith
of the E. half of the North West quarter
of Section No. 32 in Township No. 4 North
of Range No. 4 West of the 4th Principal
Meridian. January 28th 1848

Corners all established by running from quarter
post to quarter post as the law directs
N.W. quarter of Sec. 32. T. 4. R. 4.



Scale 20 Chains to the inch

- Corners established & Bearings taken
- at C { White Oak 18 N. 30 W. 6 links
 - { Burr Oak 12 S 65° E 86 links
 - at D. { Hick 5 S. 33 1/2 W. 33 links
 - { Black Oak 7 N 45 E 38 links

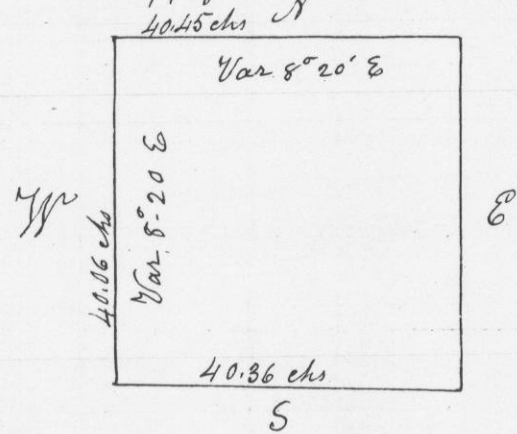
I hereby certify that the above is a true
record of the plot and minutes of said
Survey

Geo. H. Stantz
Dist Surveyor
of G. C. Wis.

No 524

Survey made for Isaac Lucas of the S.E. 1/4 of Section 14-16-R. 3
west of the 4th Principal Meridian in Grant County W. V.

S.E. 1/4 of Sec. 14-16-R. 3-



Commencing at Original Corner of Sections 13, 14, 23 & 24. Thence
West on line between sections 14 & 23: 40.36 chains to 1/4 Post. Original
North 40.06 chains to Centre of section W. O. 28 N 63° E 120 1/2 links
" " 25 4 1/2 W 145

East 40.45 chains to Original 1/4 Post
South to Beginning

I hereby certify that the above is a correct and true
record of survey made by me September 22^d 1847

Geo. R. Stantz
District Surveyor G. C. W. V.
By Stephen Mahood
Deputy