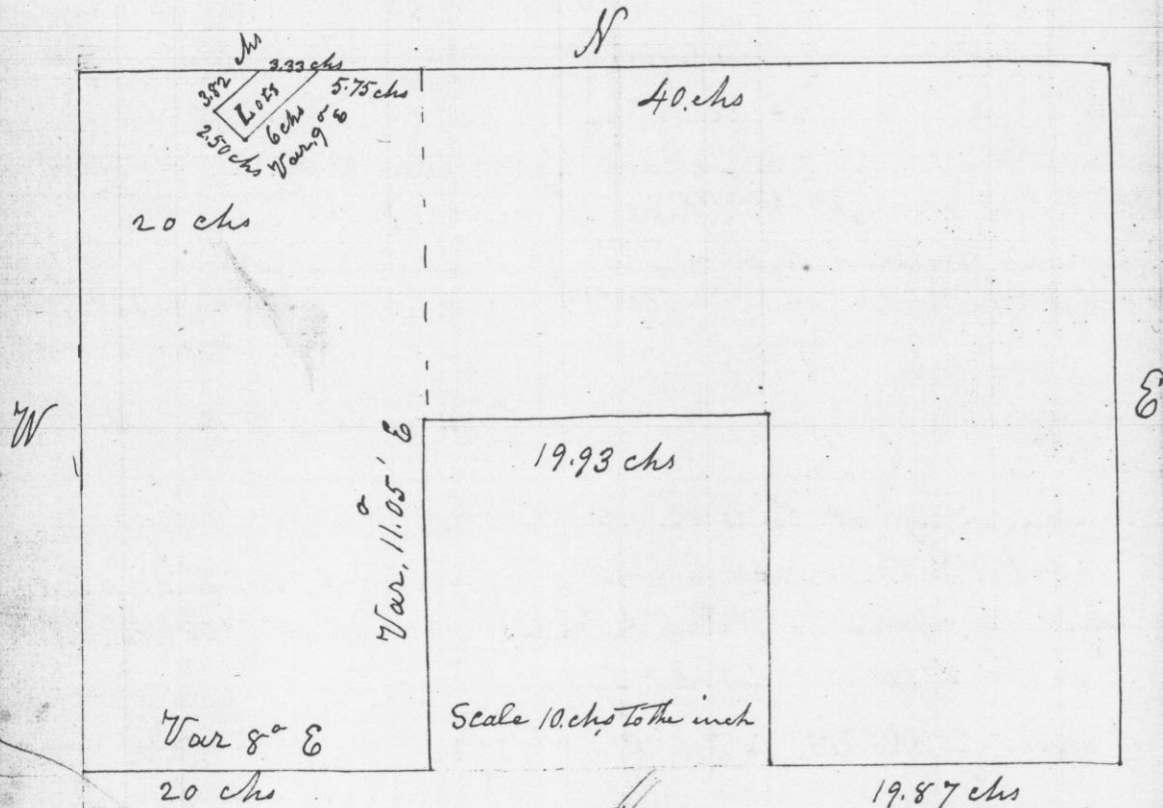


Survey made for J. J. Taylor & C. Lull of the E 1/2 & the N.W. 1/4 of the S.E. 1/4 and the E 1/2 of the S.W. 1/4 of Sec-29-T4, R4 West of the 4th Principal Meridian in Grant County W.T.



Commencing at 1/4 Post on East side of Section Original  
Thence West 40 chains to Centre of Sec- R. 0.8 N 16 8 1/2 links  
Thence West 20 chains to 1/8 Post Y. 0.8 S 1/2 E 44 1/2 links - no other  
Thence South 40 chains to 1/8 Post in branch W. Elm 5 N. 41 W 10 1/2 links  
East 20 chains to 1/4 Post Original  
North 20.24 chains to 1/16 Post W. 0.6 N 92° W 15 1/2 }  
East 19.93 chains to 1/16 Post W. 0.10 S 45° W 1.61 } no other 18  
South 20.12 chains to 1/8 Post Red. Oak. 10 1/2 N 68° W 26 1/2 } 20  
East 19.87 chains to Section Corner, Original 8 N 22 E 39 1/2 }  
North 40 chains to Beginning  
Lots Commencing 5.75 chains West from Centre Post, on line without Bearings  
Thence S. 43 1/2° W. 6 chains - N 43 1/2° W 2.50 chains - N 43 1/2° E 3.82 chains to line  
Thence with line East 3.33 chains to beginning

I hereby Certify that the above is a true record of survey made by me Dec 29th 1847

Geo. R. Stuntz  
District Surveyor G. C. W. T.  
BY STEPHEN MAHOUT  
Deputy

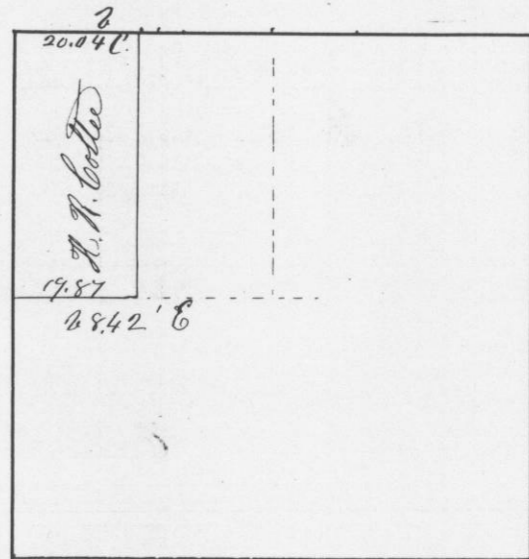
Survey made for H. N. Coltee of the West half of the North West quarter of Section No thirty five in Township No. 4 North of Range No. 5 West of the 4th principal Meridian  
Jan 18th 1848

Commencing at the North West corner of said Section, Thence East  $\text{Bearing } 11^\circ \text{ E}$  at 40.08 Chains Intersected 75 links North of the quarter section post. Corrected back 20.04 Chains and set 1/8 post in mound of Stone

Thence West from the center of the Section  $\text{Bearing } 9^\circ \text{ E}$  at 39.64 Chain, Intersected Section line 20 links South of quarter section post on West side of said Section Thence corrected back 19.87 Chains and set 1/8 post

Bearings } White Oak 128 76 West 175 links  
White Oak 13 S 42 E. 212 links

S. 35. J. 4. N. 5. W.



Scale 20 Chains to 1/4 inch

I hereby certify that the above is a true record of the plot and minutes of said Survey

Geo. R. Stuntz  
District Surveyor