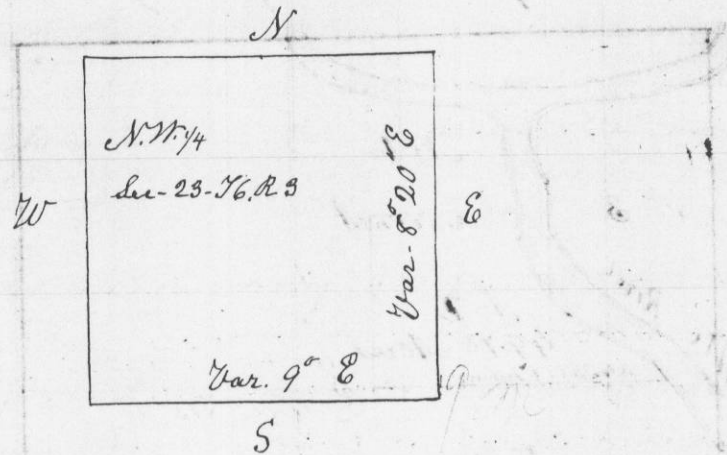


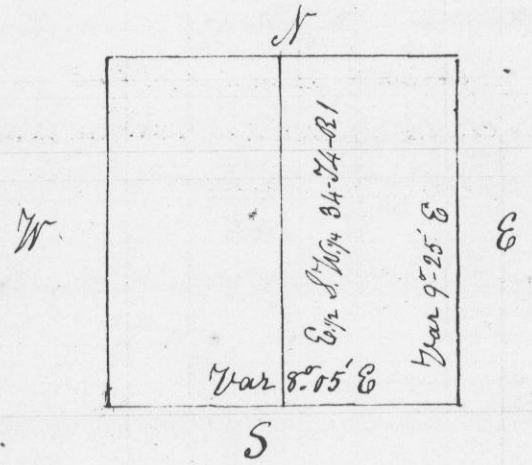
Survey made for David Smith of the N.W. 1/4 of Section 23
 T6 Range 3 West of the 1st Principal Meridian in Grant
 County W. T.
 Commencing at the 1/4 between Sections 14 & 23 - thence
 South 40.07 chains, to centre of section, Post in mound
 West 40.10 chains, to 1/4 Post - Original



I hereby certify that the above is a true record of survey
 made by me July 9th 1847

Geo. R. Stuntz
 District Surveyor G.C. W.T.
 By Stephen Mahood
 Deputy

Survey of E 1/2 of S.W. 1/4 of Section 34 - T4 - R1 West - for Valentine
 Cramer in Grant County W. T.



Commencing at 1/4 Post on Town line. Boat 6 N. 19° E 4.19 } Original
 " " 6 " 36 W 4.77 }
 Thence to centre of sec - North 40.62 chains - double Ironwood 65.21 " 4 1/2 }
 Red Oak 11 N 80 " 28 }
 West 20 chains to little Platte river - corner in river, head of Vineyard
 and Myers mill Pond - 50 links west of Post set on Bluff - East of 1/8 Post
 no bearings -
 South to 1/8 Post near corner of Cramers field - Post in Mound
 East 20.16 chains to beginning

I hereby certify that the above is a true and correct record of
 Survey made by me this 11th day of August 1847

Geo. R. Stuntz
 District Surveyor G.C. W.T.
 By Stephen Mahood
 Deputy