

Survey made for the Measure of Lot N<sup>o</sup> 2 in Fractional Section N<sup>o</sup> 5 in Township N<sup>o</sup> 6 North of Range N<sup>o</sup> 5 West of the 4<sup>th</sup> principal Meridian. Commencing at the quarter section post on the south side of said section Thence North Variation 7<sup>o</sup> 30' E at 20 chains set post for S.W. corner of said lot. Thence North 13 Chains to Wisconsin River Thence returned to said corner. Thence East Variation 8<sup>o</sup> E 20 Chains and set post for South East corner bearing Elm 14 N 59<sup>o</sup> E 20 links Hick 6 S 30<sup>o</sup> E 25 links Thence North var. 7<sup>o</sup> 30' E. 1850 Chains to Wisconsin River

Fractional Section N<sup>o</sup> 5 - T. 6 N. 5 W.

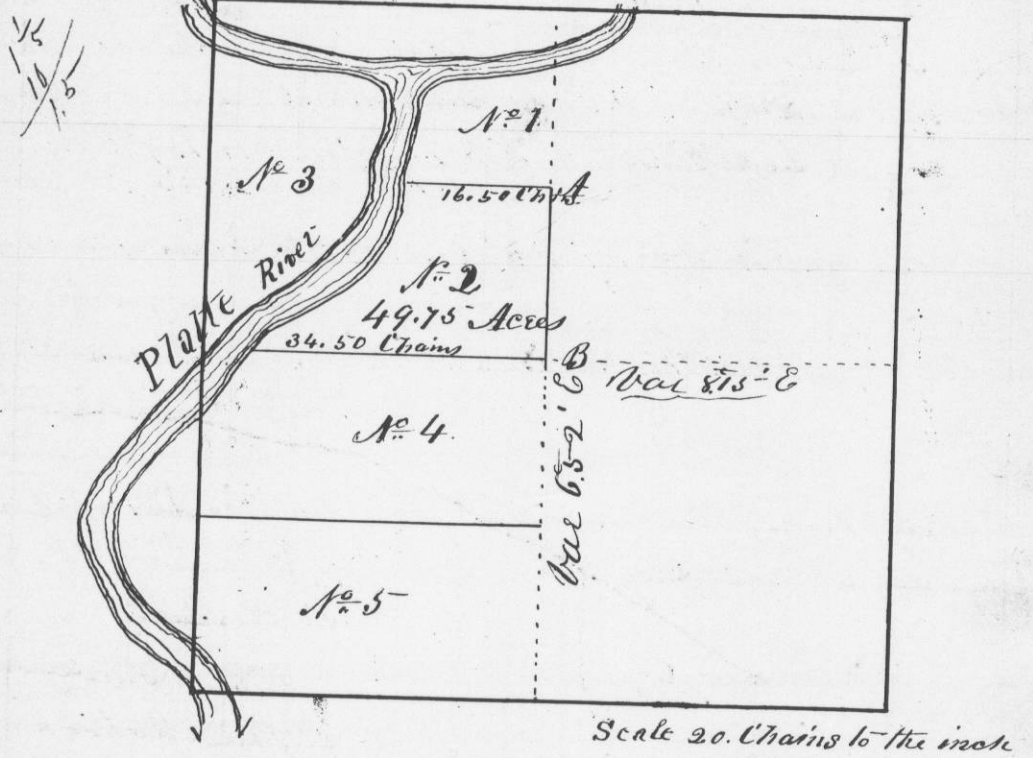


I hereby certify that the above is a true plot and correct minutes of said survey made by me the 24<sup>th</sup> day of July A.D. 1847  
Geo. R. Stuntz  
District Surveyor  
of C. C. W. T.

Survey made for James D. Briggs of Lot

N<sup>o</sup> 2 in Fractional Section N<sup>o</sup> 2 in Township N<sup>o</sup> 2 North, of Range N<sup>o</sup> 2 West of the 4<sup>th</sup> principal Meridian. July 30<sup>th</sup> 1847  
Corners all established by running from quarter post to quarter posts as the law requires

Sec. N<sup>o</sup> 17. T. N<sup>o</sup> 2 of Range N<sup>o</sup> 2 West-



Corners established  
at A Black Oak 10 N 22<sup>o</sup> E 54 links  
White Oak 12 S 72<sup>o</sup> W 66 links  
at B Elm 6 S 3<sup>o</sup> E 48 links  
Ash 5 S 76<sup>o</sup> E 48 links

I hereby certify that the above is a true plot and correct minutes of said survey made by me 30<sup>th</sup> day of July A.D. 1847  
Geo. R. Stuntz  
District Surveyor