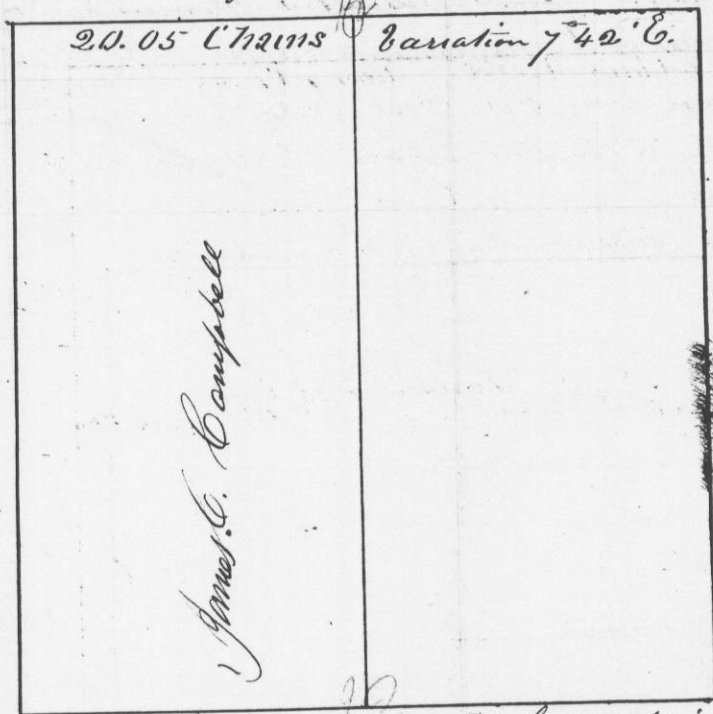


Survey made for James C. Campbell

of the West half of the North West quarter of section N^o 14 in Township N^o 2 North of Range N^o 1 West of the 4th principal Meridian July 21st A.D. 1847

Corners all Red cedar posts set in Mounds - Established by running as the law directs

N.W. 1/4 of Sec. N^o 14 T. 2. R. 1 W.



Scale 10 Chains to the inch

I hereby certify that the above is a true plot and correct Minutes of said Survey made by me the 21st day of July 1847

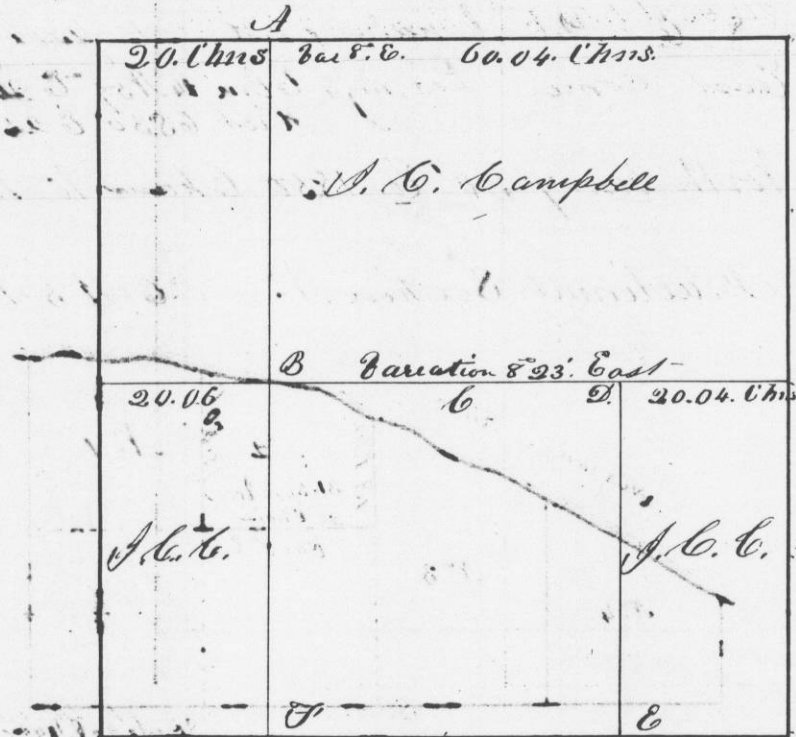
Geo. W. Stuntz
District Surveyor
of G.C.M.

Survey made for James C. Campbell

of the North East quarter West half of South West quarter, East half of North West quarter and East half of S. E. quarter of section N^o 15 in Township N^o 2 North of Range N^o 1 West of the 4th principal Meridian July 21st 1847

Corners all established by running as the law requires

Sec. N^o 15. T. 2. R. 1 West



Corners established Scale 20. Chains to the inch

- at A Burr Oak 7 N 47 W 150 L
- at B Burr Oak 7 S 87 W 60 links
- at C Burr Oak 9 S 66 E 143 L
- at D Red Cedar post in Mound Burr Oak 7 S 81 E 78 L
- at E Burr Oak 7 S 39 W 61 links
- at F Burr Oak 10 N 80 E 98 links
- at G Burr Oak 5 N 67 E 102 L
- at H Burr Oak 4 N 5 W 78 L

I hereby certify that the above is a true plot and correct Minutes of said survey made by me this 21st day of July A.D. 1847

Geo. W. Stuntz