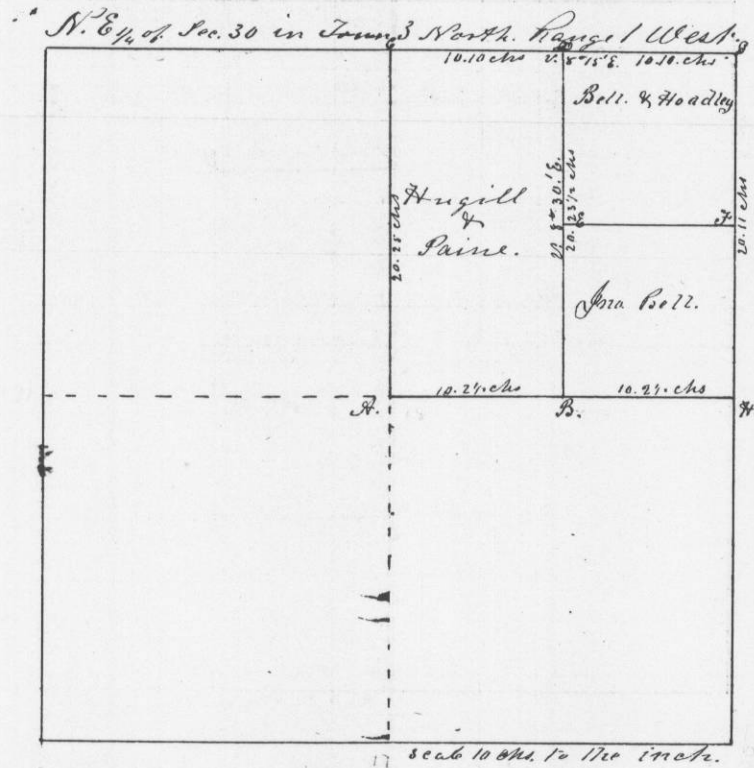


No. 499.

Survey and subdivision made for Hugill, Paine, Bell & Hoadley of the N.E. 1/4 of the N.E. 1/4 of section 30 in Town 3 North, Range 1 West 4th Principal Meridian July 14th 1847. Corners and posts all established by running as the law directs



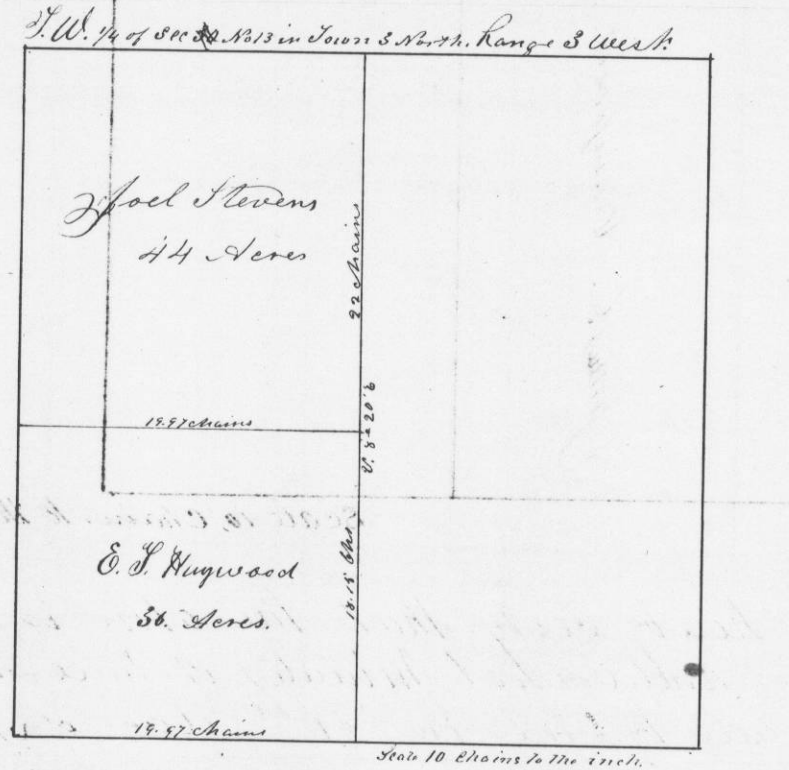
Bearings at C. Original. At C. W. Oak 18 S. 62° E. 67 links at A. W. Oak 14 S. 81° W. 134 lks. at B. W. Oak 10 N. 70 1/2° W. 133 1/2 lks. At F post in pit 4 ft deep at E. W. Oak 24 N. 84° E. 50 lks.

I certify that the above is a true plot and correct minutes of said survey made by me the 14th day of July A. D. 1847

Jno. Dunn,  
Deputy District Surveyor  
of Grant County  
W. T.

No. 500.

Survey made for Olicka, J. Haywood and Joel Stevens in the West 1/4 of the S.W. 1/4 of Section No. 13 in Town 3 North of Range 3 West of the 4th Principal Meridian July 14th 1847. Commencing at the S.W. corner of said section Thence 19.97 chs. to post section post Bearings W. Oak 12 S. 57° W. 19 lks. Run Oak 13 N. 81° E. 32 Links Thence North var. 8° 20' E. 14.15 chs. to post between Haywood & Stevens. Thence North 32 chains to N.E. corner of said west Bearing Black Oak 8 N. 49° W. 100 lks. Black Oak 9 N. 37 1/2° E. 140 lks. Thence returned to said post between Haywood & Stevens Bearing B. Oak 6 N. 76 1/2° W. 12 links Thence west parallel to section 19.97 links to section line on west side of section. Thence south on said section line to the place of beginning.



I hereby certify that the above is a true plot and correct minutes of said survey made by me the 14th day of July A. D. 1847.

Geo. N. Shultz,  
District Surveyor of  
Grant County W. T.