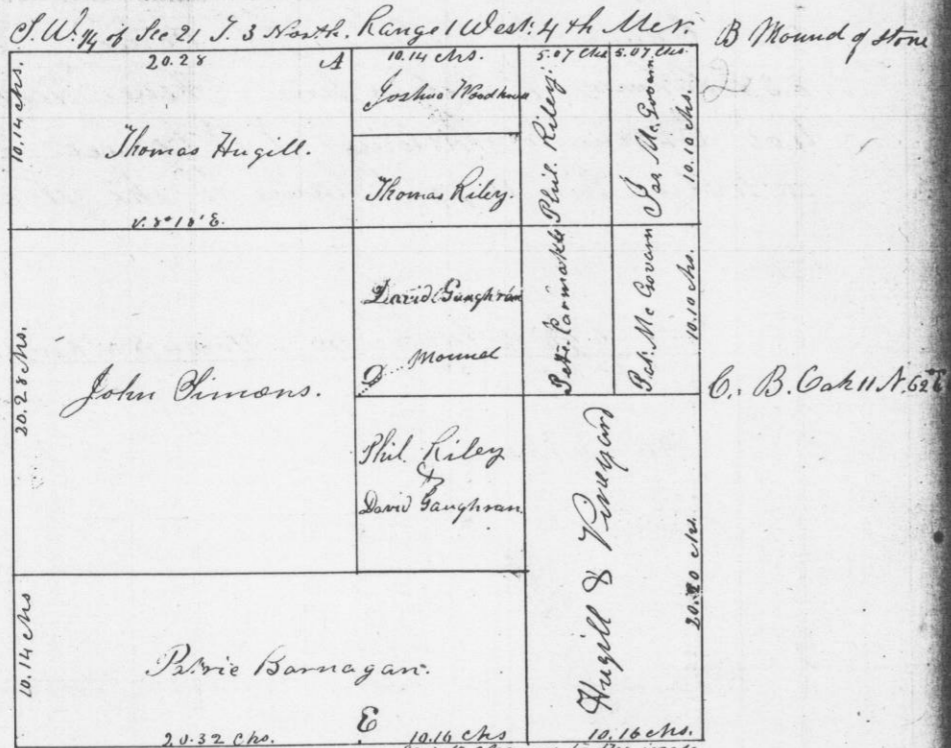


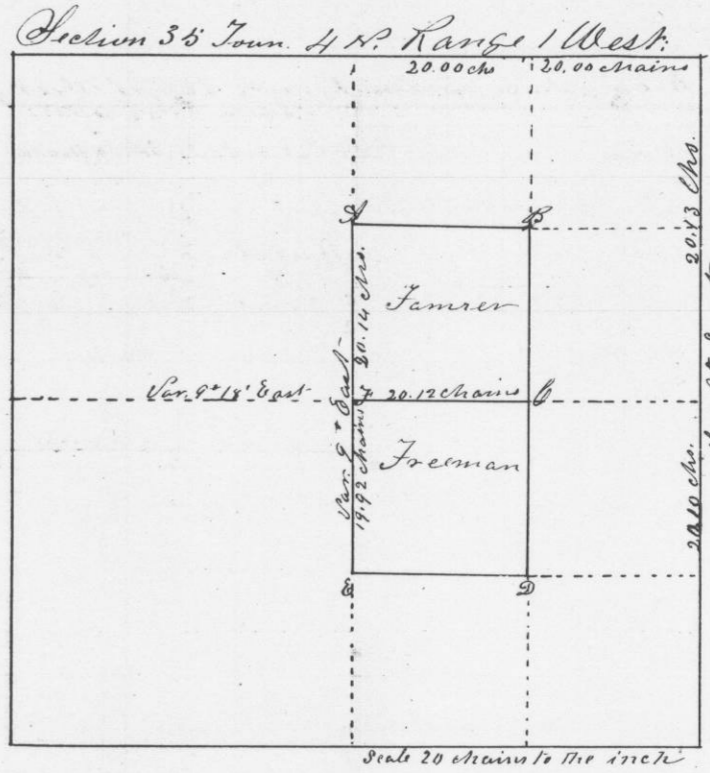
Survey an subdivision of the S.W. 1/4 of Section No. 21 in Township No 3 North of Range 1 West 4th Meridian into lots as awarded to claimants by the board of arbitrators made July 9th & 10th 1847.  
 Quarter post in center of Section and others established by running as the law directs through the section



Corners at - E { Black Oak 6 A 24 1/2 links  
 White Oak 4 S 69° E 68 links  
 I hereby certify that the above is a true plot and correct representation of said survey made by me the 9th day of July A.D. 1847.

Geo. R. Stuntz  
 District surveyor of  
 Grant County  
 Wis. T. J.

Survey made for Stanford Farmer & Freeman of the S.W. 1/4 of the N.E. 1/4 and the N.W. 1/4 of the S.E. 1/4 of Section 35 in Town 4 North Range 1 West 4th Meridian July 13, 1847.  
 Corners all established by running as the law directs



Bearings at A Sugar 4 S. 19° W. 19 chs Bearing at B Black Oak 9 N. 67° W. 10 1/2 chs  
 Burr Oak 18 S. 46° E. 41 chs

Bearings at B Black Oak 5 S. 88° W. 31 links at E Black Oak 7 S. 62° W. 20 chs  
 Black Oak 6 N. 84° E. 47 chs Burr Oak 6 N. 29° E. 57 chs

Bearings at C Br. Oak 10 S. 20° E. 15 chs at F Br. Oak 10 S. 36° E. 49 chs  
 Br. Oak 18 N. 52° E. 65 chs Br. Oak 6 N. 47° W. 236 chs

I hereby certify that the above is a true plot and correct minutes of said survey made by me the 13th day of July A.D. 1847.

Geo. R. Stuntz  
 District surveyor of  
 Grant County  
 Wis. T. J.