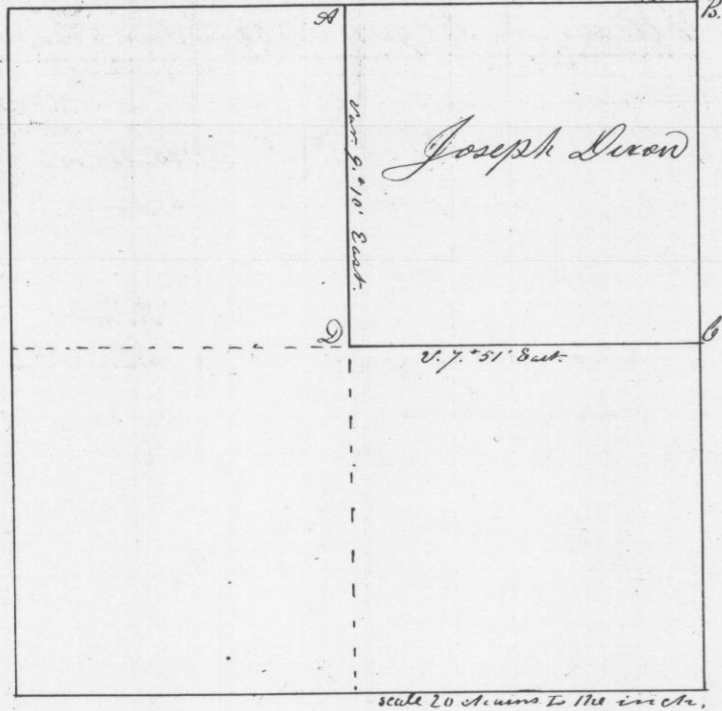


No. 495

Survey made for Joseph Dixon of the N.E. 1/4 of Section No 36 in Township No 3 North of Range No 2 West of the 4th Meridian July 3d 1847.

Quarter post in the center established by pinning at the four corners.

Section 36 in Town 3 North Range 2 West

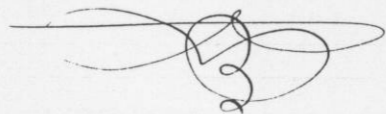


At A, B & C. Original bearings

at D, Bear East 14.8. 9.0 W 39 links. White Oak 12.5. 7.7 1/4 88 84 links.

I hereby certify that the above is a true plot & correct minutes of said survey made by me the 3d day of July A. D. 1847.

Geo. M. Sturtevant
District Surveyor of
Grant County
Wis. T. Y.



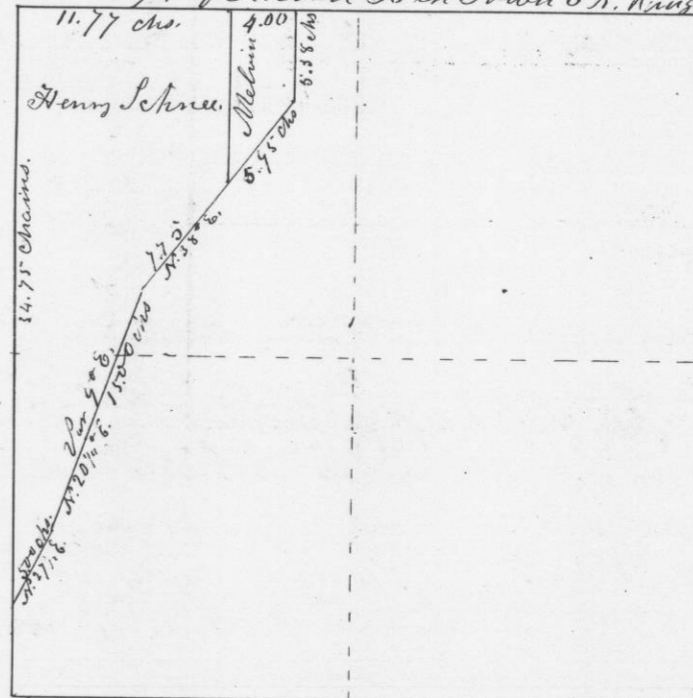
No. 496

Survey made for Henry Schree and James Melvins in the North East quarter of Section No 36 in Township No 3 North of Range No 2 West of the 4th principal Meridian

July 3rd 1847

Commencing at the N.W. corner of said N.E. quarter Thence South 34.75 Chains. Thence N 27 1/2 E 5.00 Chains due East - Thence N 20 1/4 E 15.00 Chains. Thence N 38 E 7.75 Chains to Melvins S.W. corner. Thence N 38 E 5.95 Chains to Melvins S.E. corner. Thence North 5.38 Chains to section line Thence West on said line 4.00 Chains to Melvins N.W. corner. Thence West on section line 11.77 Chains to the place of beginning

N.E. 1/4 of Section 36 in Town 3 N. Range 2 West



I hereby certify that the above is a true plot and correct representation of said survey made by me the 3d day of July A. D. 1847.

Geo. M. Sturtevant
District Surveyor of
Grant County
Wis. T. Y.