

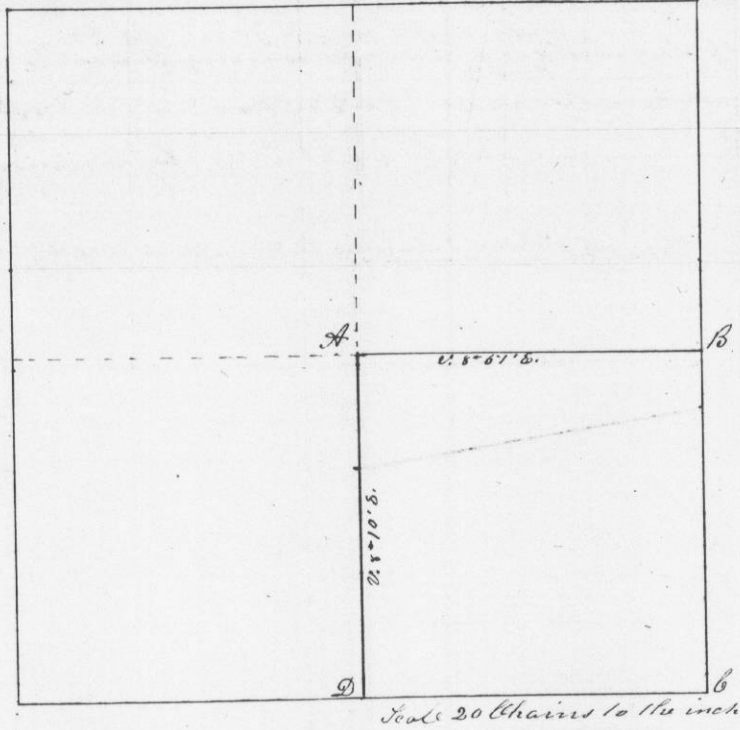
No. 493.

Survey made for Henry Ray of the South East quarter of Section No. 30 in Township No. 2 North of Range No. 1 West 4th Principal Meridian

July 1st. 1847.


Quarter post established in the center of the section by running as the law directs

Section No 30 in Township No 2 Range 1 West



At A. Post marked 1/48, Burr Oak 6 N. 80° W. 76 Links  
At B. Post marked 1/48, Black Oak 18 N. 26° W. 89 Lks. Black Oak 5 N. 83° E. 60 Lks. At C & D. Original Bearings

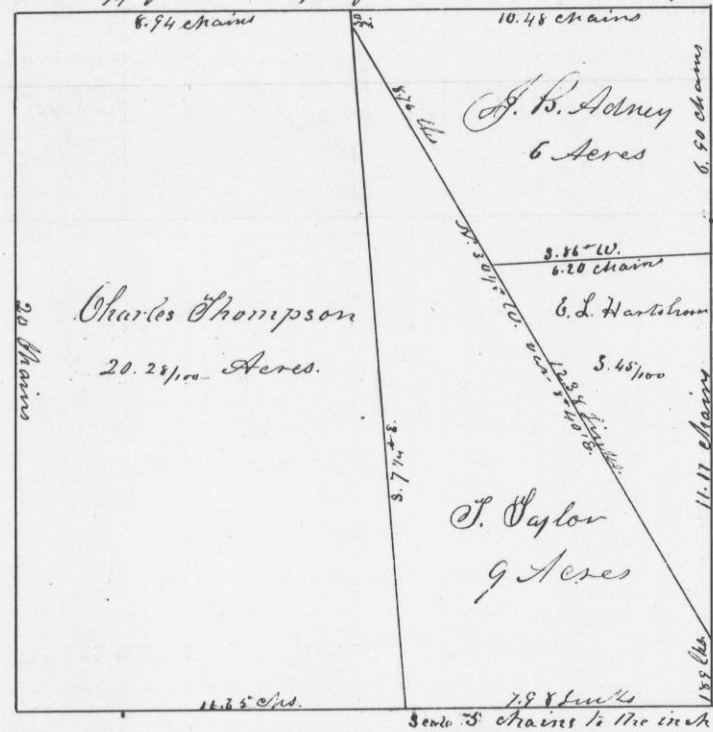
I hereby certify that the above is a true plot and correct minutes of said survey made by me the first day of July A. D. 1847.

Geo. M. Stuntz  
District Surveyor of  
Grant County  
Wis. Terr.  


No. 494

Survey and Subdivision into lots of 1/4th S.W. 1/4 of the S.W. 1/4 of section No. 30 in Township No. 3 North of Range No. 1 West. 4th. P. M. - made for Charles Thompson, Thomas Taylor and J. B. Adney and E. L. Hartshorn as awarded by the board of Arbitrators chosen to adjust claims on reserved mineral lands  
July 2d 1847.

S.W. 1/4 of 1/4 S.W. 1/4 of Sec 30 in Town 3 Range 1 W.



I hereby certify that the above is a correct representation of said survey made by me the 2d day of July A. D. 1847.

Geo. M. Stuntz  
District Surveyor of  
Grant County  
Wis. Terr.  
