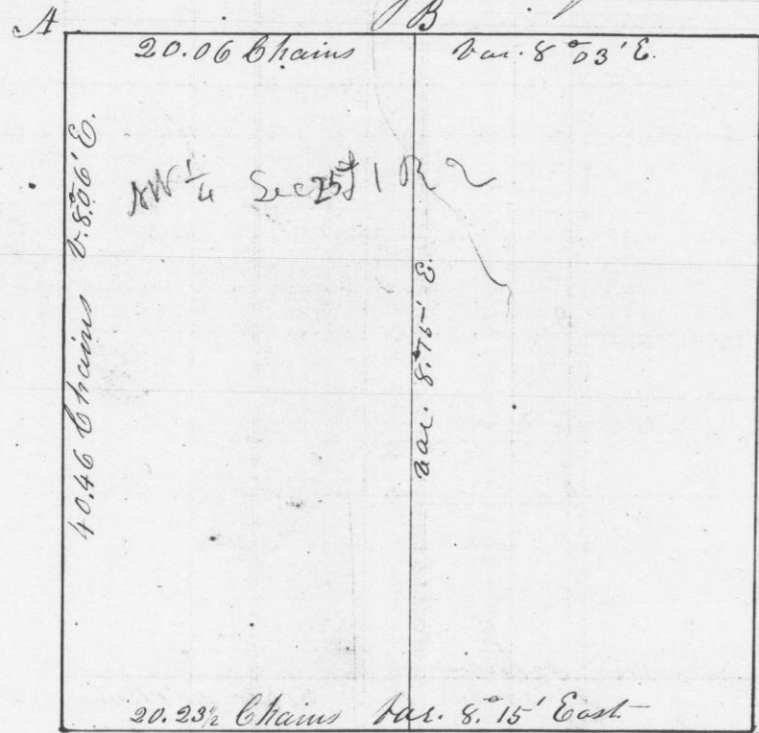


Survey made for Arch Sampson of the West
 half of the N.W. quarter of Section No. 25 in Township
 No. 1 North of Range No. 2 West of the 4th Meridian
 June 16th 1847
 Corners established by running as the law directs



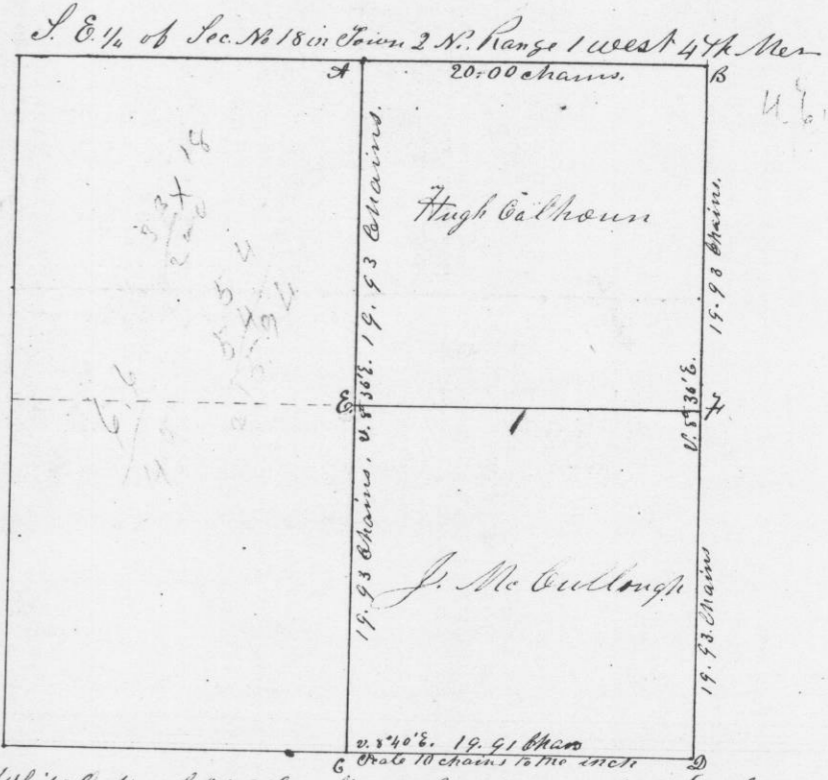
- Scale 10 chains to the inch
- 1 at A Red Cedar post 3 inches square
 - 10 at B Stone Monument 6 inches square 20 in. long
 - 12 at C Stone Monument 6 inches square { B.C. 10. N 12 1/2 W 97
 - 8 at D Red Cedar post 6 inches square { B.C. 12. N 40 E. 140 line
 - 10 Bearing at B { White Oak 10 S 66 1/2 E 173 line

I hereby certify that the above is a true plot
 and correct minutes of said survey made
 by me the 16th day of June A.D. 1847

Geo. R. Clunty
 District Surveyor of
 Grant Co.
 W. Va.

1933
 1934
 1935
 1936
 1937
 1938
 1939
 1940
 1941
 1942
 1943
 1944
 1945
 1946
 1947
 1948
 1949
 1950
 1951
 1952
 1953
 1954
 1955
 1956
 1957
 1958
 1959
 1960
 1961
 1962
 1963
 1964
 1965
 1966
 1967
 1968
 1969
 1970
 1971
 1972
 1973
 1974
 1975
 1976
 1977
 1978
 1979
 1980
 1981
 1982
 1983
 1984
 1985
 1986
 1987
 1988
 1989
 1990
 1991
 1992
 1993
 1994
 1995
 1996
 1997
 1998
 1999
 2000

Survey made for Hugh Calhoun and John McCullough
 in the S. 1/2 of the E. 1/4 of Section No. 18 in Township No. 2 North
 of Range No. 1 West of the 4th Principal Meridian
 Commencing at the S.E. corner of said section. Thence West variation
 2° 40' E. 19.91 chains and set post. Thence North var. 8° 36' E. 19.93 chains
 and set post. Thence North 19.93 chains to N.W. corner of said S. 1/2
 Thence East 20 chains to 1/4 section corner. Thence South var. 8° 36' E. 19.93
 chains to post. Thence south to the place of beginning 19.93 chains
 Thence returned to last mentioned and blazed a line due West
 through the center of said tract of land. also marked new
 bearing trees at the corners of secs. 17, 18, 19 & 20 White Oak 16 N. 5° 56' 48" E
 The original trees having been destroyed White Oak 7 N. 56' 2" E. 120 Ch.



Bearing at C. White Oak S 54° W. 10 links. Bearings at F White Oak 8 N 45° E 216
 Black Oak 10 S 27° E 246

I certify that the above is a true plot and correct minutes
 of said survey made by me this 26th day of June A.D. 1847.
 Geo. R. Clunty