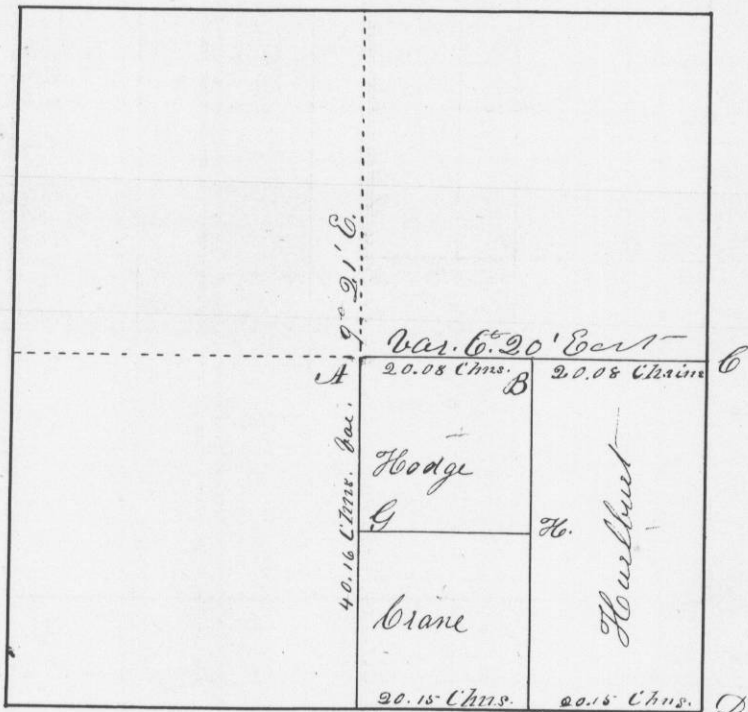


N^o 487

Survey made for Egbert Hurlburt, Jefe Crane and Samuel Hodges in Section 20 Township N^o 4 North of Range N^o 2 West of the 4th Meridian June 3rd 1847

Section 20. T. 4. Range 2 West



Corners established

- at A { Burr Oak 6 S 15 W 34 1/2 links
- { Burr Oak 10 S 64 E 64 links
- " B { Burr Oak 7 S 65 1/2 W 129 links
- { Burr Oak 6 N 14 1/2 E 156 links
- " C { Burr Oak 7 S 72 E 38 links
- { Burr Oak 8 N 42 1/2 E 62 links
- " D Original
- at E { Burr Oak 10 N 88 W 85 links
- { Burr Oak 9 S 42 W 108 links
- " F { Aspen 5 S 86 E 7 links
- { Aspen 5 S 38 W 31 links
- " G { W. Oak 18 N 47 1/2 E 42 1/2 links
- { Black Oak 12 N 21 W 113 links
- " H { White Oak 10 S 60 W 109 links
- { White Oak 6 N 19 E 59 1/2 links

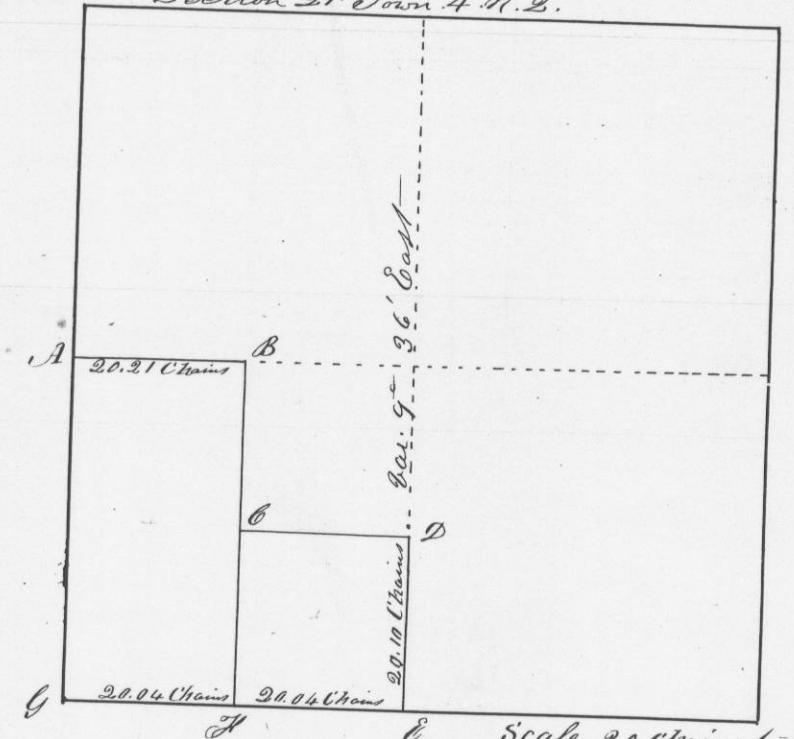
I hereby certify that the above is a true plot and correct minutes of said survey made by me this third day of June A.D. 1847

Geo. W. Stanton
District Surveyor

N^o 488

Survey made for Alfred Moses and Abner Moses of the South East quarter of the South West quarter for Abner Moses, and the West half of the South West quarter for Alfred Moses

Section 21 Town 4 N. 2.



Corners established

- at A { Burr Oak 7 S 72 East 38 links
- { Burr Oak 8 N 42 E 62 links
- { set post - marked 1/8 S.
- " B { set post at foot of ledge
- { 20 links East by corner which
- { comes in the river
- " C set post
- " D set Cedar post - marked 1/8 S
- at F Black Oak 8 S 82 E 4 links
- { Black Oak 10 North 16 links
- " G Section corner

I hereby certify that the above is a true record of the plot and minutes of said survey made by me this 4th day of June A.D. 1847

Geo. W. Stanton
District Surveyor of Grant County