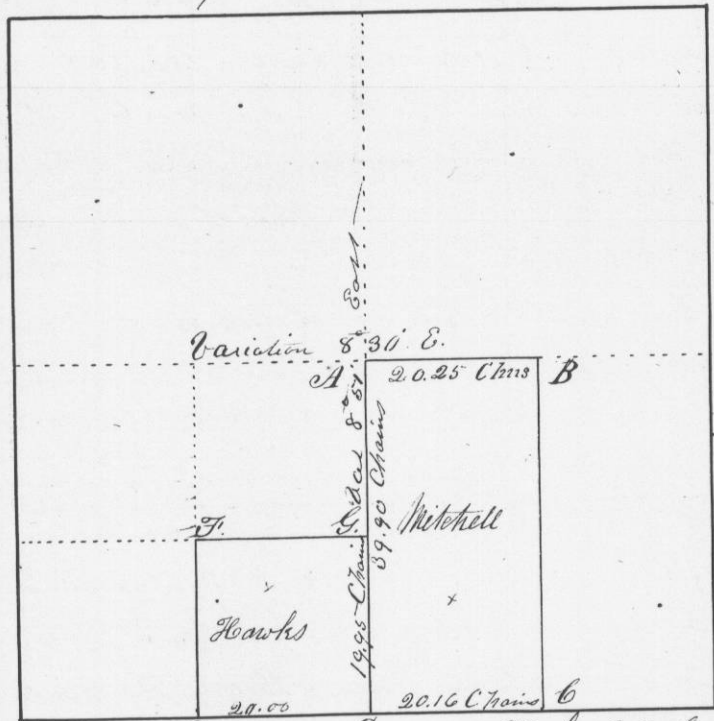


No. 485

Survey made for J. P. Hawks and William Mitchell in section No. 7 Township No. 6 North of Range No. 2 West of the 4th Meridian — May 28th A.D. 1847
 The West half of the South East quarter of section 7 for Mitchell and the South East quarter of the S.W. 1/4 for Hawks —
 Section 7 T. 6. R. 2



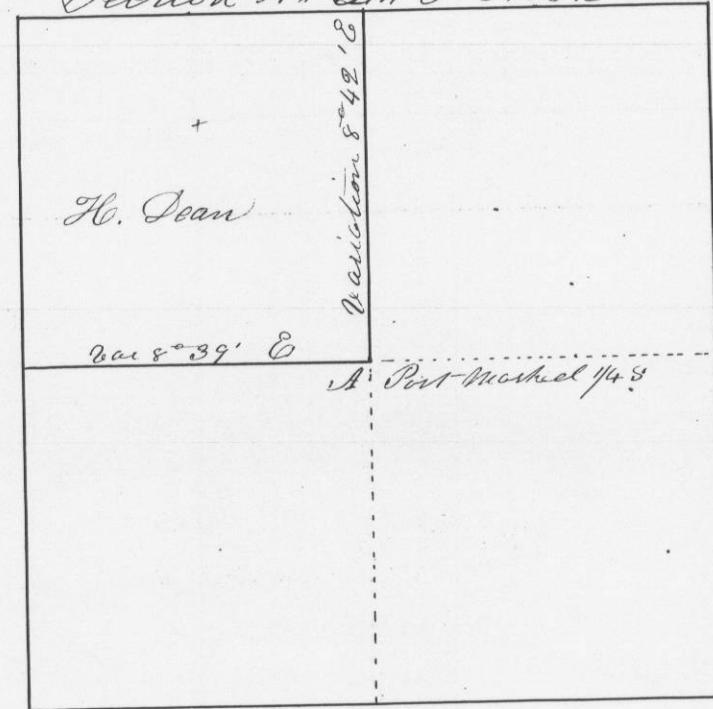
- Scale 2.0. Chains to Minutes
 Corners established as the following directed
- at A Set post marked 1/4 S
 - at B { Bar Oak 12 N 56 E 113 links
White Oak 28 S 72 1/2 W 103
 - at C Post set in Mound
 - at D. Post set in Mound
 - at E Bar Oak 85 82 E 119 links
 - at F Black Oak 105 87 W 118 links
 - at G W. C. Oak 179 W 113 links
 - at H W. Oak 135 29 E 183 1/2 links
 - at I Bar Oak 95 26 W 41 links

I certify that the above is a true plot and correct minutes of said survey made by me
 A true read
 Attest Geo. R. Stuntz
 District Surveyor of

No. 486

Survey made for Harmon Dean of the North West quarter of Section No. 24 in Township No. 6 North of Range No. 3 West of the 4th Meridian

Section No. 24, T. 6. R. 3.



Center post established without chaining

I hereby certify that the above is a true plot and correct representation of said survey
 A true read May 29th 1847
 Attest Geo. R. Stuntz
 District Surveyor of Grant County
 W. T. G.