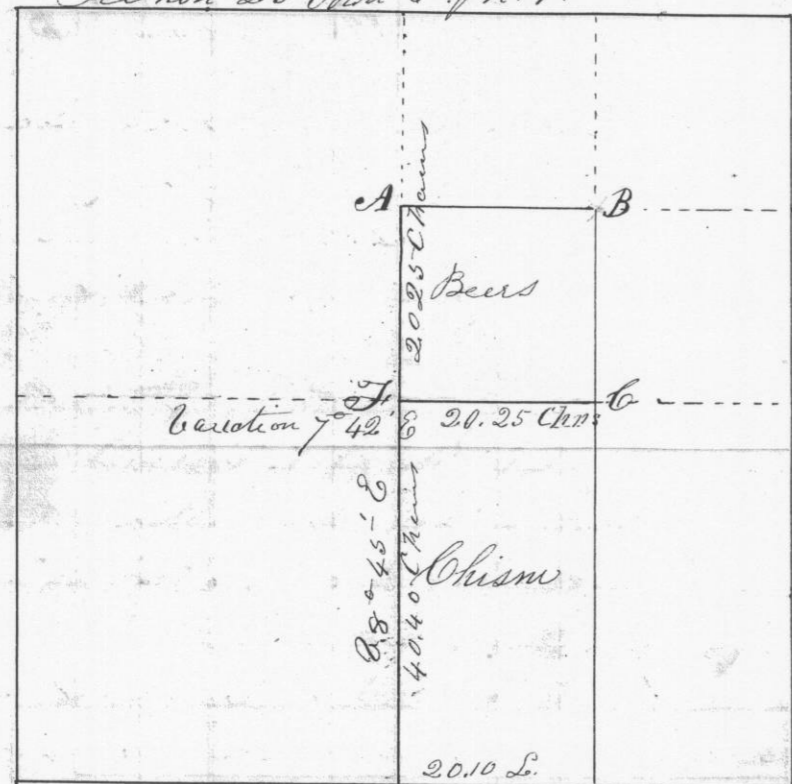


Survey made for John Beers and John  
 Chism in section N<sup>o</sup> 23 in Township N<sup>o</sup>  
 6 North of Range N<sup>o</sup> 4 West of the fourth  
 principal meridian. May 27<sup>th</sup> A.D. 1847  
 Section 23 Twp 6 N. R. 4 W.



- Corners established at E - Original
- at A { Bee Oak 10 N 42 1/2 E 12 0 L  
 Bee Oak 8 S 82 1/2 W 230
  - B { Bee Oak 9 S 75 1/2 E 24 links  
 White Oak 12 N 16 1/2 W 31 1/2
  - C { Black Oak 18 N 45 1/2 W 32 links  
 W. Oak 18 S 50 E 75 links
  - D { White Oak 8 S 58 E 32 1/2 links  
 Black Oak 6 N 87 1/2 W 91 links
  - F { Black O. 20 S 33 E 23  
 White Oak 17 N 24 1/2 E 34

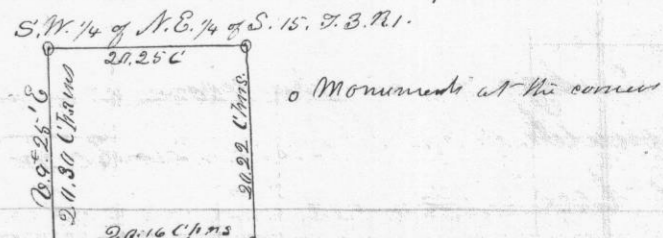
I hereby certify that the above is a true plot  
 and correct Minutes of said Survey made  
 by me this 27<sup>th</sup> day of May A.D. 1847  
 Geo. W. Stanton

7/28

Survey made for Isaac Lord and others  
 of the South West quarter of the South East  
 quarter of section N<sup>o</sup> 15 in Township N<sup>o</sup> 3 North  
 of Range N<sup>o</sup> 1 West of the 4<sup>th</sup> Meridian  
 May 26<sup>th</sup> A.D. 1847

Commencing at the center of said section  
 Thence East variation 9° E. 40.50 chains intersected  
 section line 21 links North of 1/4 post  
 Connected back At 20.16 chains set Stone  
 Monument 6 inches square - Marked 1/8 S.  
 Thence running North from center intersected bar,  
 section line 56 links East of 1/4 post - at the distance  
 of 40.60 chains. Connected back 20.30 Chain  
 bar 9° 25' East and placed Stone Monument  
 6 inches square - Marked 1/16 S for 1/4 post  
 Bearings { Black Oak 14 N 5° E 260 links  
 Black Oak 14 N 13 W 231 links  
 Established the center of the N.E. 1/4 of said section  
 by running through it as required by law and set  
 Stone Monument Marked 1/16 S. 6 inches square  
 Bearings { Black Oak 7 N 3 1/4 E 77 links  
 Black Oak 7 S 16 1/2 E 46 links  
 Center of section as established by Jackson  
 placed a Stone Monument Marked 1/4 S  
 Bearings { Black Oak 10 N 41 1/2 W 114 1/2 links  
 Bearings at the S.E. corner of what  
 { Black Oak 6 N 15° W 79 links  
 Black Oak 5 S 52 1/2 W 89 links

112  
 21036  
 48  
 72  
 71216



I hereby certify the above to be a true plot  
 Geo. W. Stanton