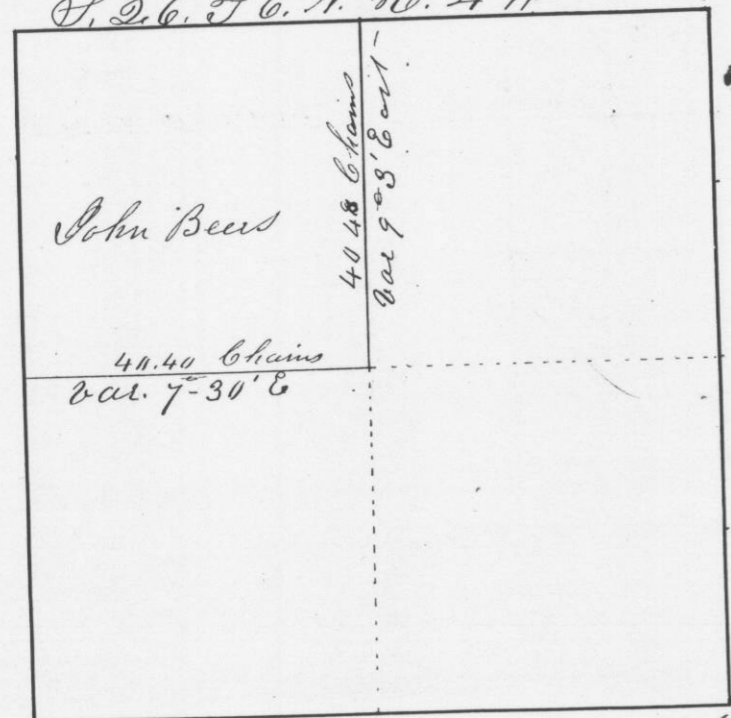


Survey made for John Beers of the North West quarter of section N<sup>o</sup> 27 in Township N<sup>o</sup> 6 North of Range N<sup>o</sup> 4 West of the 4<sup>th</sup> Meridian. May 26<sup>th</sup> 1847

Commencing at the quarter section post on the West side of section. Thence East through the center bearing 8<sup>o</sup> East intersected section line 70 links North of 1/4 Post on East side of section

Corrected back bearing 7<sup>o</sup> 30' East North through the center of section bearing 9<sup>o</sup> East intersected section line 7 links E of quarter post. Corrected back bearing 9<sup>o</sup> 3' East to the center and set quarter section post

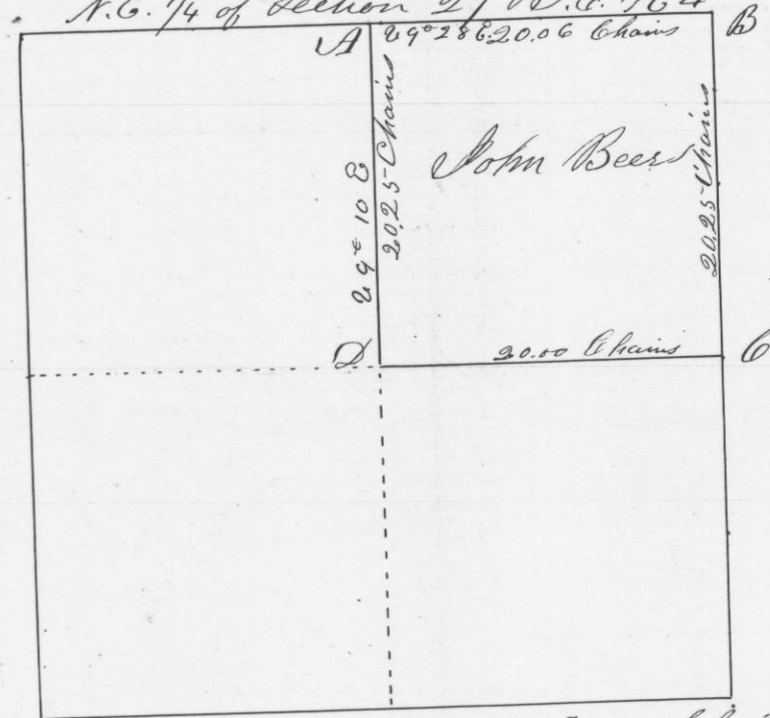
Bearing White Oak 8 North 10<sup>o</sup> E 37 links  
White Oak 10 South 66<sup>o</sup> E 94 links  
S. D. C. T. C. N. R. 4 W



Scale 20 Chains to the inch

I certify that the above is a true plot and correct field notes of said survey made by me this 26 day of May A.D. 1847 Geo. R. Huntz District Surveyor

Survey made for John Beers of the N.E. 1/4 of the N.E. 1/4 of section N<sup>o</sup> 27 in Township N<sup>o</sup> 6 North, of Range N<sup>o</sup> 4 West of the 4<sup>th</sup> principal Meridian in Grant County N.E. 1/4 of section 27 T.C. R. 4



Scale 10 Chains to the inch

- Corners established
- at A Blue Oak 8 N 11 1/2<sup>o</sup> W 322 links
- Blue Oak 8 S 70<sup>o</sup> W 395 links
- " B Original {
- " C Black Oak 8 N 36<sup>o</sup> E 258 links
- Blue Oak 6 S 34<sup>o</sup> W 164 links
- " D Set post marked 1/10 S

I hereby certify that the above is a true record of the plot and field notes of said survey made by me the 27<sup>th</sup> day of May A.D. 1847 Geo. R. Huntz District Surveyor Grant Co. W.V.