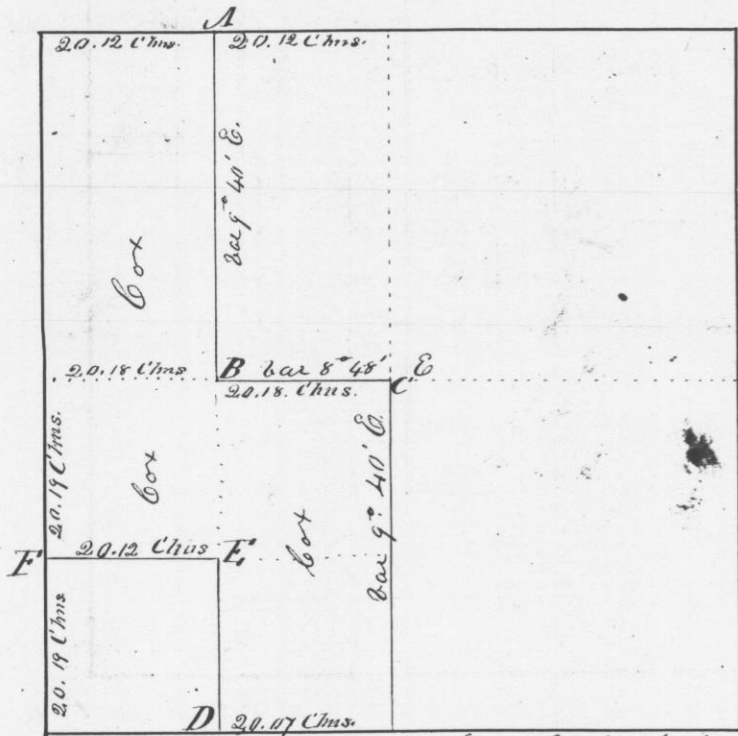


Survey made for Thomas Cox of
 the N. 1/2 of the N.W. 1/4, East 1/2 of the S.W. 1/4
 and N.W. 1/4 of S.W. 1/4 of Section No. 15 in
 Township No. 4 North of Range No. 1 West of
 the 4th principal Meridian in Grant County W. Va.
 May 5th 1847
 Section No. 15 T. 4 R. 1



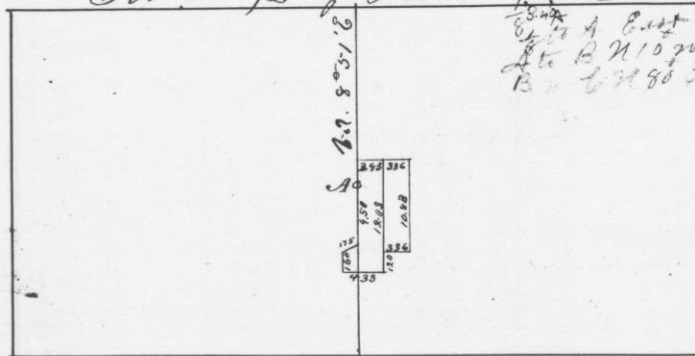
Scale 20 Chains to the inch

- Corners Established
- at A Burr Oak 11 N 21° W 142 links
 - 10 Burr Oak 8 S 58° W 162 links
 - " B Set-post marked, 1/8 S.
 - " C White Oak 14 S 80° E 77 links
 - " White Oak 15 N 20° E 47 links
 - at D Burr Oak 10 S 75° W 29 links
 - 23 Burr Oak 12 N 65° E 98 links
 - " E set post marked 1/16 S
 - " F Burr Oak 6 S 46° E 60 links
 - 24 Burr Oak 6 S 78° W 40 links

I hereby certify that the above is a true plot
 and correct minutes of said survey made by me
 the fifth day of May A.D. 1847

Geo. R. Stuntz
 District Surveyor
 Grant County

Survey made for N. H. Virgin in Section No. 15 in Township
 No. 3 North of Range No. 1 West of the 4th Meridian
 Commencing at the center of said section
 Thence running South Variation 9° East
 40.00 Chains Intersected section line 10 links East
 of quarter section post
 Corrected back 2.0 Chains and set 1/16 post
 Bearing - W. Oak 15 inches in diameter N. 32° E 50 links
 Thence North 250 links and set post - bar 8 51' E.
 Thence East 293 links and set post "
 Thence East 336 links and set post "
 Thence South 10, 83 links and set post "
 Thence West 336 links and set post "
 Thence South 12.0 links to a black Oak tree 4 inches in dia.
 Thence West 433 links to a post
 Thence North 160 links to a post
 Thence North 58° E 175 links set post
 Thence North 700 links to the place of beginning
 South 1/2 of Section 15 T. 3 R. 1



Scale 20 Chains to the inch

A 1/16 post

I hereby certify that the above is a true plot and
 correct minutes of said survey made by me
 the 22nd day of May A.D. 1847

Geo. R. Stuntz
 District Surveyor
 Grant County W. Va.