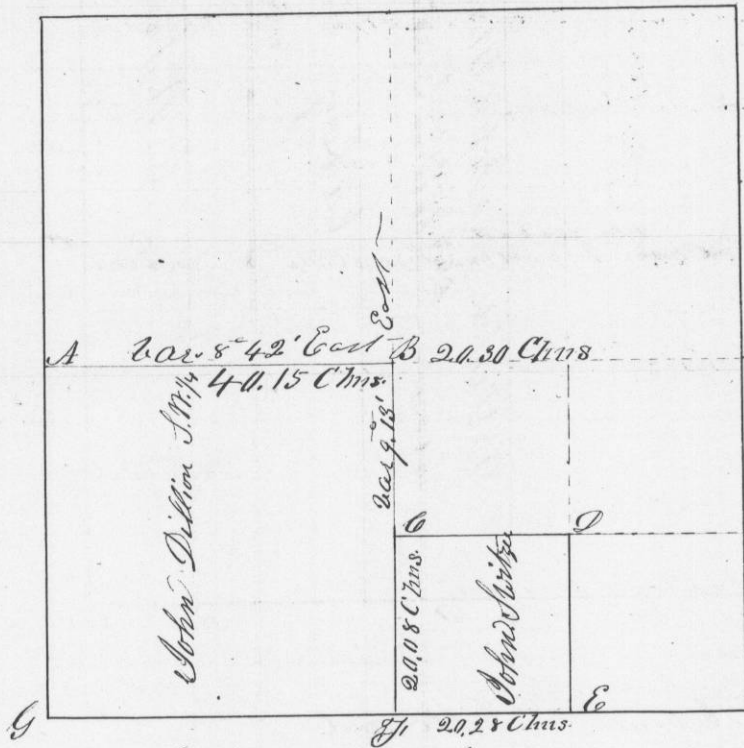


Survey made for John Dillon and John Shorter in Section N<sup>o</sup> 8. Township N<sup>o</sup> 6 North of Range N<sup>o</sup> 2 West of the 4<sup>th</sup> Meridian

Section N<sup>o</sup> 8. T. 6. R. 2



Corners established

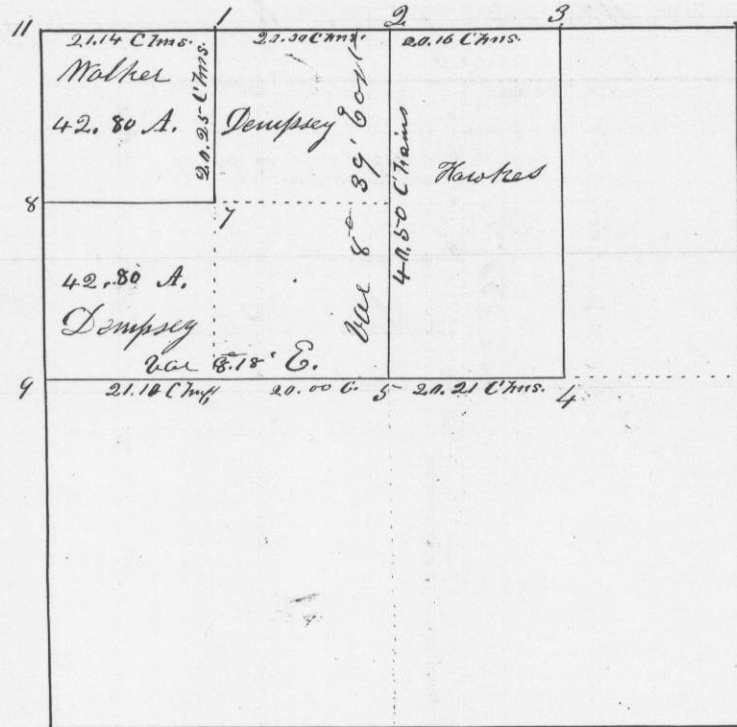
- |                                       |                                    |
|---------------------------------------|------------------------------------|
| Bearings                              | Bearings                           |
| At A. Original                        | M. J. White Oak 11 S 44 W 20 links |
|                                       | White Oak 12 N 63 1/2 E 39 links   |
| " B. White Oak 12 S 49 W 38 links     | White Oak 15 N 87 1/2 W 133 links  |
| White Oak 11 N 32 W 60 links          | White Oak 12 S 67 E 250 links      |
| " C. White Oak 12 N 55 1/2 E 78 links | " F Original                       |
| Black Oak 18 S 37 E 52 links          | " G Original                       |

I hereby certify that the above is a true plot and correct record of the field notes of said survey made by me this twenty second day of April A.D. 1847

Geo. R. Sturtevant  
District Surveyor

Survey made in section 18. Township N<sup>o</sup> 6 North of Range N<sup>o</sup> 2 West of the 4<sup>th</sup> principal Meridian for Philo Dempsey, J. P. Hawks, & Silas Walker April 23<sup>rd</sup> 1847

Section 18 T. 6. R. 2. West



1/2 of Area in NW 1/4 of 21.14 x 21.25 = 42.80 A

Corners established

- |      |          |                               |
|------|----------|-------------------------------|
| At 1 | Bearings | Blue Oak 8 S 82° E 119 links  |
|      |          | Black Oak 11 S 87 W 118 links |
| " 8  | "        | White Oak 12 N 76 E 45 links  |
|      |          | Blue Oak 8 N 7 1/2 W 29 links |

The remaining corners are all set in mounds from which the jobs bear East, distant, 6 links.

I hereby certify that the above is a true plot and correct record of the field notes of said survey made by me the twenty third day of April 1847

Geo. R. Sturtevant  
District Surveyor  
Grant Co.