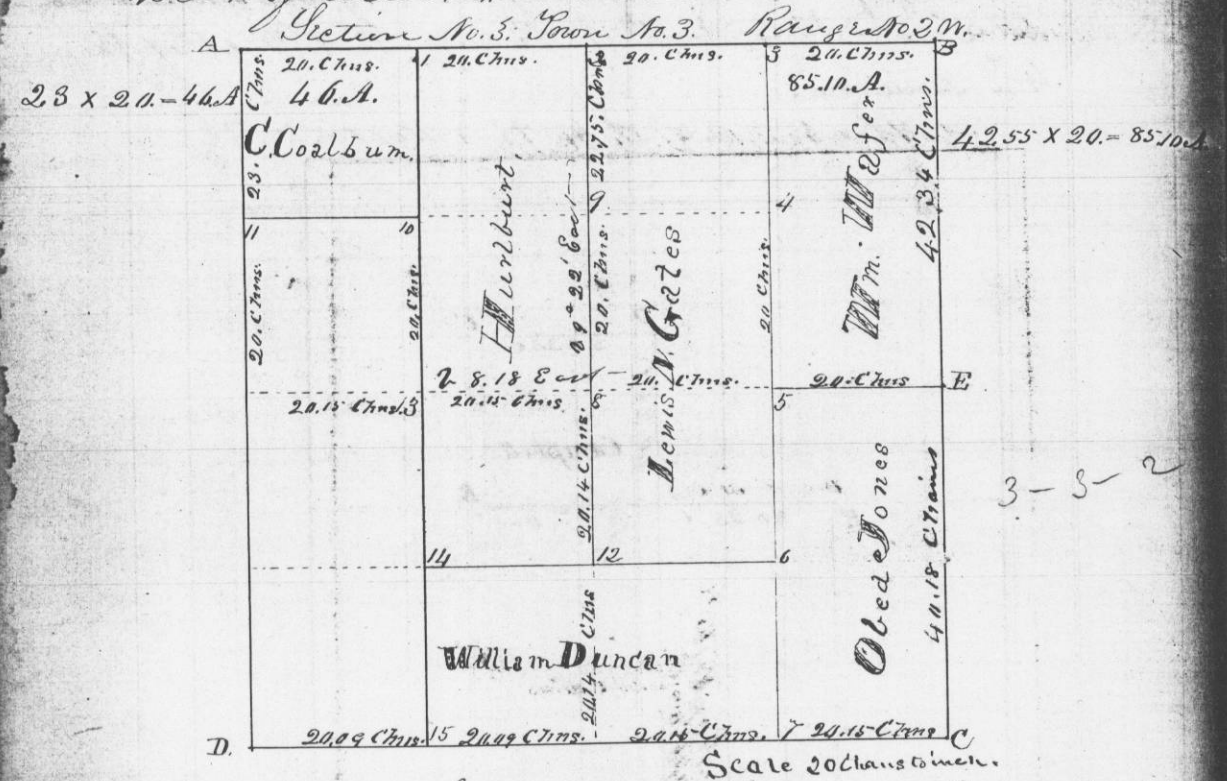


Survey made for Obed Jones and others
Section No. 3 Town No. 3 North of Range
West of the 4th Meridian. March 25th & 26th

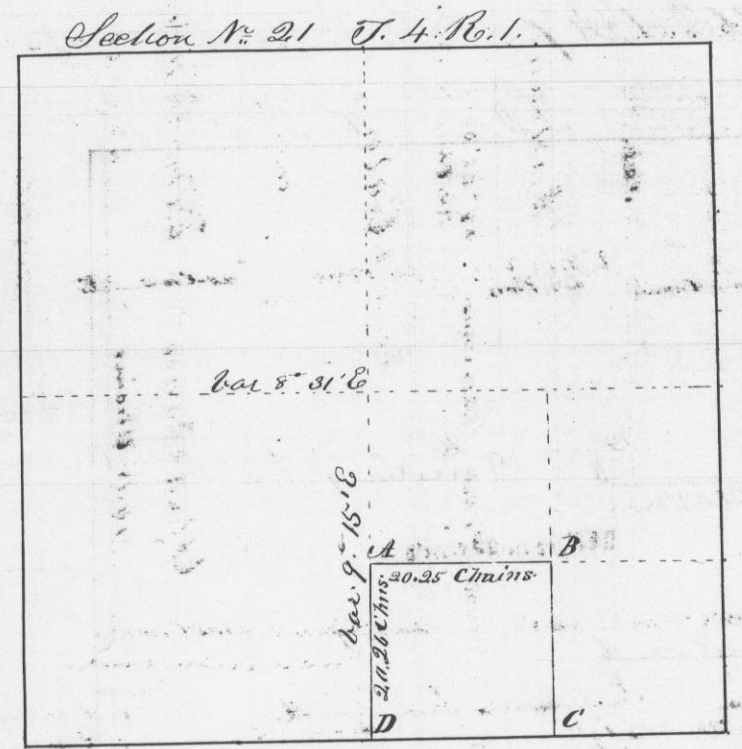


Bearings	Corners Established	Bearings
at 1	White Oak 20 West 35 links	at 10
	White Oak 20 South 18 links	Black Oak 6 S 27 E 72 links
	Black Oak 8 S 68 W 70 links	White Oak 20 S 7 W 24 links
2	White Oak 6 S 9 E 26 links	Sugar 6 N 5 E 30 links
	Sugar 7 South 6 links	12
	Mid Elm 19 N 16 W 16 links	White Oak 14 N 70 E 89 links
	White Oak 18 S 46 W 25 links	Black Oak 6 S 61 W 41 links
4	Linden 8 S 54 W 25 links	15
	White Oak 18 S 17 E 65 links	White Oak 10 N 68 W 31 links
	Red Robin 5 S 20 E 27 links	White Oak 15 S 15 W 34 links
5	White Oak 18 S 17 E 65 links	14
	Red Robin 5 S 20 E 27 links	White Oak 20 S 78 E 10 links
6	White Oak 13 S 74 W 62 links	Black Oak 10 S 10 W 21 links
	White Oak 14 S 67 E 35 links	15
	White Oak 13 S 85 W 35 links	White Oak 8 S 88 W 21 links
7	White Oak 20 S 60 E 82 links	
	White Oak 12 N 81 E 87 links	
8	White Oak 18 S 66 W 54 links	
	White Oak 18 S 89 E 26 links	
9	Black Oak 6 S 27 E 72 links	

I hereby certify that the above is a true and correct record of the field notes of said survey made by me the 24th and 25th days of March A.D. 1847.
Geo. R. Clunty

District Surveyor, S.C.M.

Survey made for Alexander Graham of the South West quarter of the South East quarter of Section No. 21 Township No. 4 North of Range No. 1 West of the 4th Meridian



Corners established

Bearings	Bearings
at 1	at 2
Sugar 6 S 45 E 11 links	at 1
Sugar 7 N 44 W 7 links	Black Butternut 6 S 58 E 21 links
	Sugar 9 S 50 W 40 links
at 3	at 4
White Oak 12 S 11 E 110 links	at 3
Black Oak 12 N 39 W 70 links	Sugar 10 N 41 W 37 links

I hereby certify that the above is a true plot and correct minutes of said survey made by me this thirty first day of March A.D. 1847

Geo. R. Clunty
District Surveyor of
Grant County
W. Va.