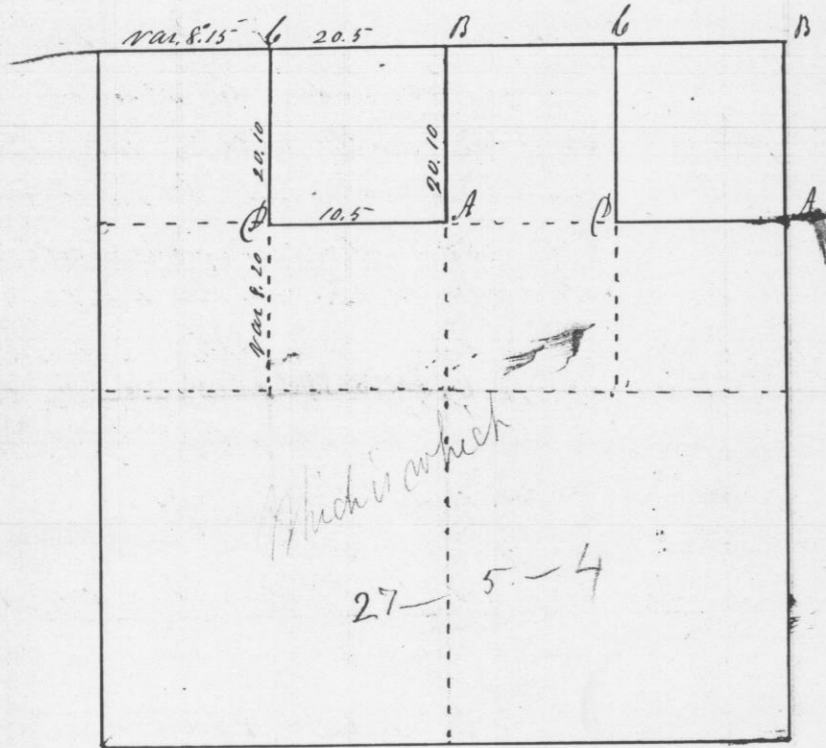


Survey for C. Cimperwood of the NE 1/4 of the NE 1/4 of section 27 in Town 5 North of Range 4 W of the 1<sup>st</sup> Principal Meridian



Scale 20 chas. to the inch

- At A Post Corner of lot 10 S 28 E 151 chs.
- At B " " Original
- At C " " " NW Cor 10 S 25 E 10 "
- At D " " " SW Cor 16 S 88 W 50 "

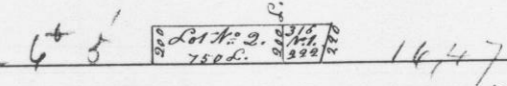
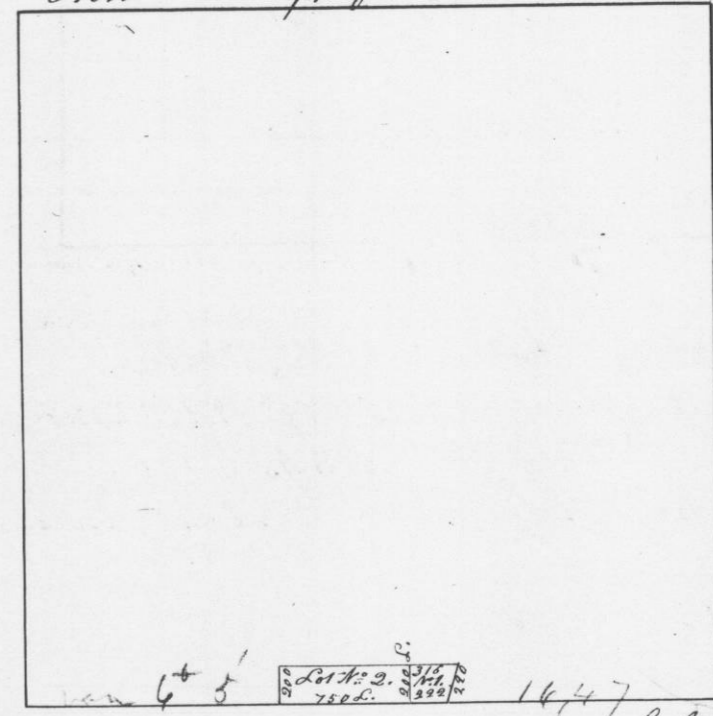
I hereby certify that the above is a true plat & copy of the minutes of said survey made by me the 20 of Oct 1846

Saml. Co. Wilcox  
Dist Surveyor of  
T. 5 N. S. 4 W.

Survey made for James Gilmore of two lots of land in the N. E. quarter of section N<sup>o</sup> 1 in Township N<sup>o</sup> 1 North of Range N<sup>o</sup> 2 West of the 1<sup>st</sup> Meridian Grant Co. N. S. Commencing 1647 links west of the quarter section post on the East side of said section  
Variation 6° 5' East

Thence west on south side of lot N<sup>o</sup> 1. 222 links and set post corner to lots N<sup>o</sup> 1 and 2  
Thence west 750 links on south side of lot N<sup>o</sup> 2 Thence North 200 links. Thence East 750 links and set post cor. to lots 1 & 2. Thence East 316 links Thence South 24 3/4° West, 220 links to the place of beginning. Lot N<sup>o</sup> 1 contains 53/100 of an acre. Lot N<sup>o</sup> 2 contains 1 75/100 acres

North East 1/4 of section N<sup>o</sup> 1 T. 1. R. 2.



I hereby certify that the above is a true record of the plat and minutes of said survey made by me the 20<sup>th</sup> day of February A. D. 1847

Geo. R. Shultz  
District Surveyor G. C. N. S.