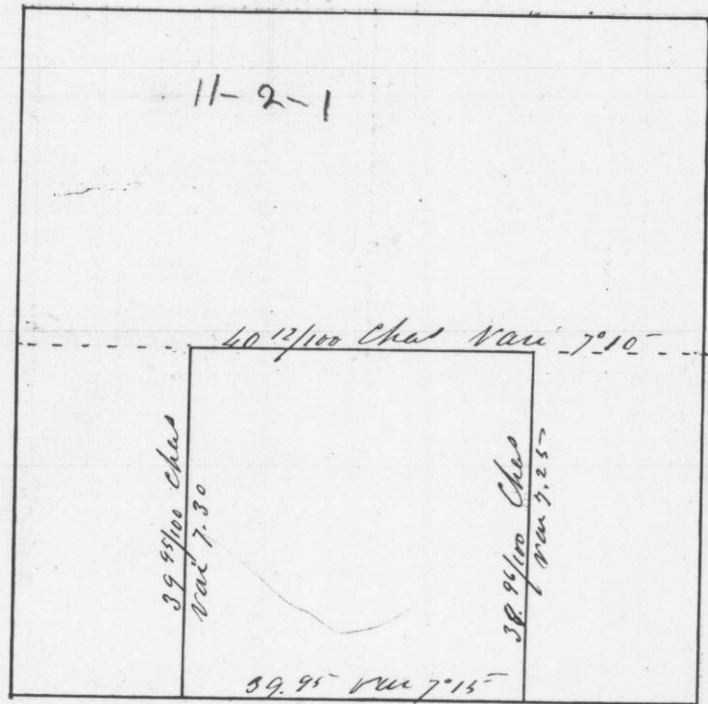


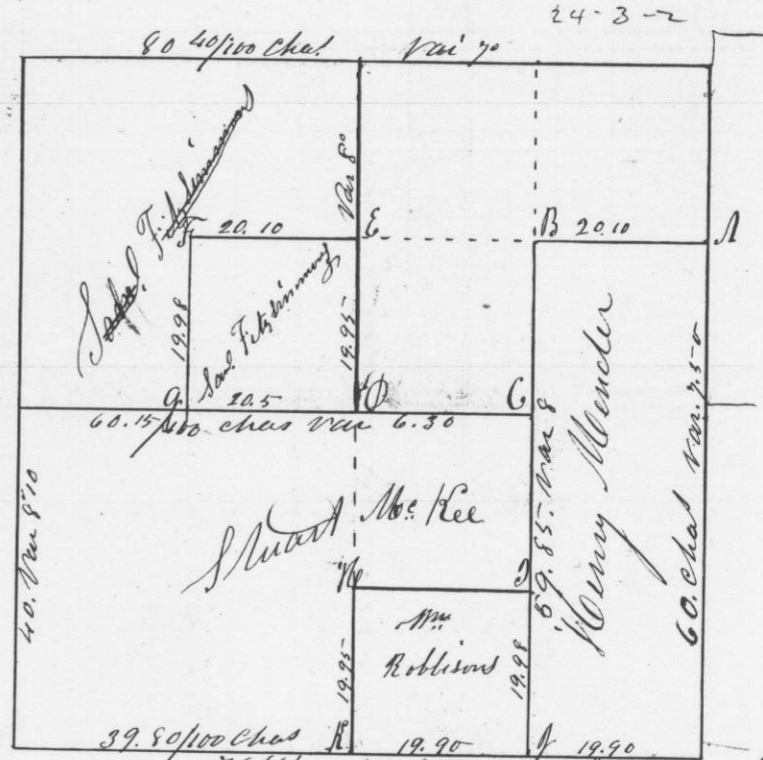
Survey made for Stuart McKee of the
 N 1/2 of the S E 1/4 of the E 1/2 of the S E 1/4
 of Section 11 in Town 2 N of Range 2 W
 of the 4th Principal Merid



Scale 20 chas to
 the inch

Corners all marked with Posts set
 in mounds of Earth
 I hereby certify that the above is a true
 Plat and copy of the minutes of said
 survey made by me the 8th of May 1846
 Saml. C. Miller
 Dist Surveyor of
 A. Co. W. Va.

Survey in Section 24 T3 N of Range 2 W of the 4th
 Princ. Meridian for Stuart McKee Henry
 Menden Saml Fitzsimmons & Mrs Robinson



Scale 20 chas to the inch

- A Post Cor N 10 N 81 W 85 St 14
- B " " White 12 S 3 E 20 " 18
- C " " Sugar 12 S 45 E 55 " 17
- D " " Bar 12 S 13 W 52 " 9
- E " " Black 10 N 81 W 20 St 11
- F " " White 12 N 77 W 52 " 14
- G " " Elm 10 N 32 W 50 " 12
- H " " Bar 12 N 34 E 28 " 21
- I " " set in mound of Earth
- J " " Bar 12 S 72 E 20 " 20
- K " " Elm 13 S 88 E 9 " 11

I hereby certify that the above is a true Plat
 & copy of the minutes of said survey made
 by me the 12 13th day of May 1846
 Saml. C. Miller
 Dist Surveyor of A. Co. W. Va.