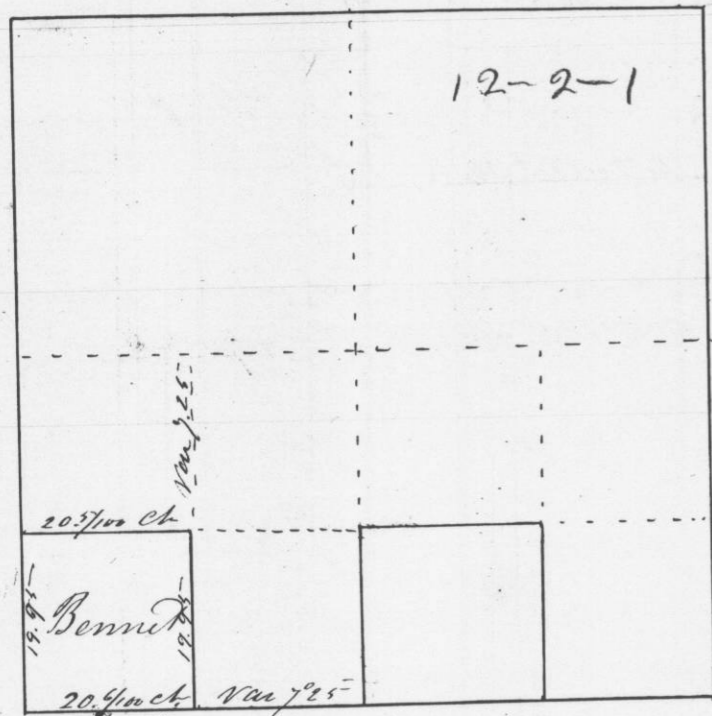


No. 455

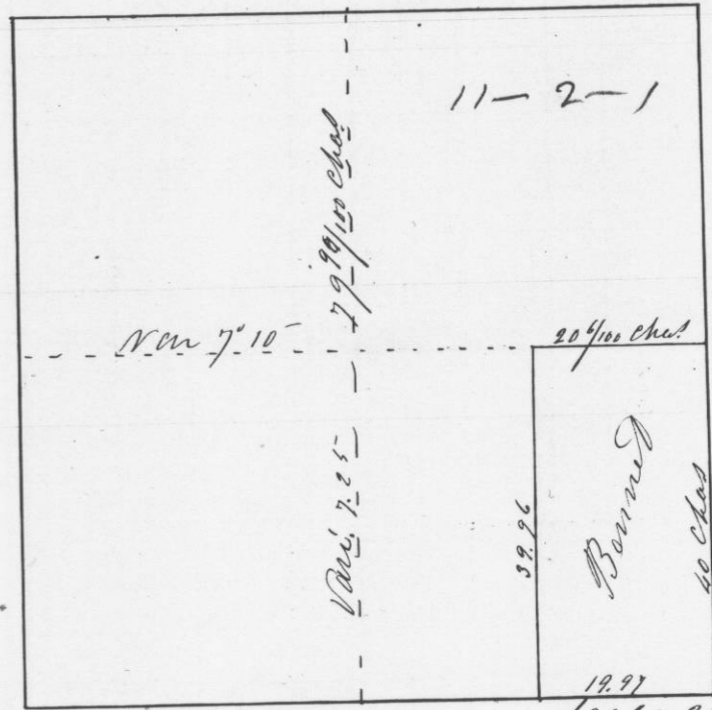
Survey for John Bennett of the S.E. 1/4
of the S.W. 1/4 of Sect. 12 in T. 2 N. of R. 10 W
of the 4th Prime Merid.



Scale 20 ch. to the inch
 Corners all marked with Posts set
 in mounds of Earth
 I hereby certify that the above is a true
 Plat & Copy of the minutes of said Survey
 made by me on the 7th of May 1846
 James C. Wilton
 Dist. Surveyor of
 Gt. Co. W. Va.

No. 456

Survey made for John Bennett of the
E. 1/2 of the S.E. 1/4 of Section 11 in Town 2
N. of Range 1 W. of the 4th Meridian



Scale 20 ch. to the inch
 Corners all marked with Posts set in mounds
 of Earth
 I hereby certify that the above is a true
 Plat & Copy of the minutes of said Survey
 made by me the 7th of May 1846
 James C. Wilton
 Dist. Surveyor
 of Gt. Co. W. Va.