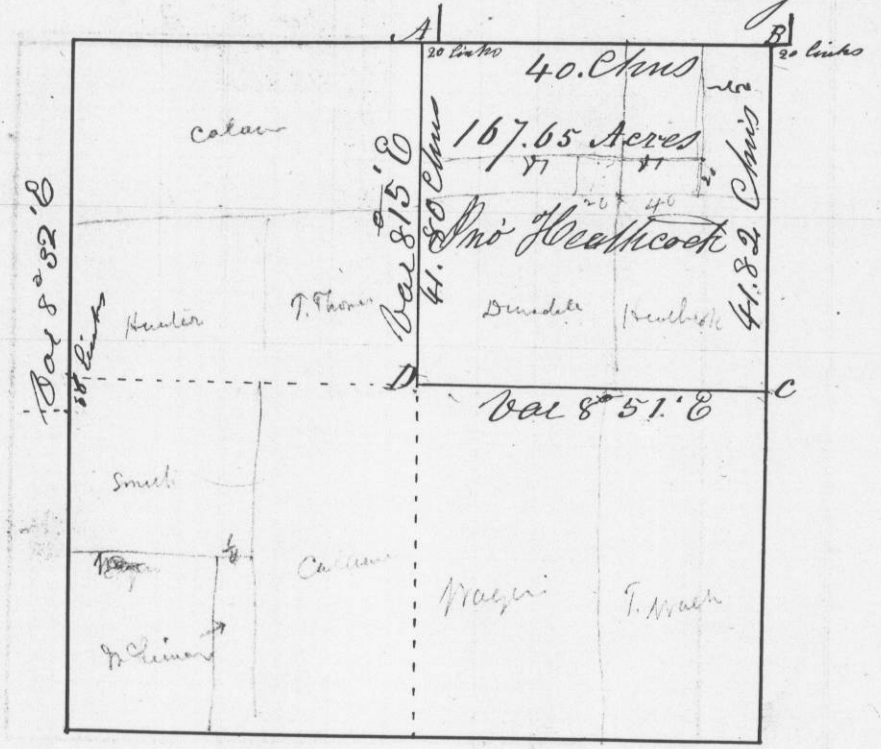


Survey made for John Heathcock of the N.E. quarter of Section No. 6 in Town No. 5 North of Range No. 1 West of the 4th principal Meridian in Grant County W. Va. February 9th 1846

Section No. 6 Town No. 5 Range No. 1

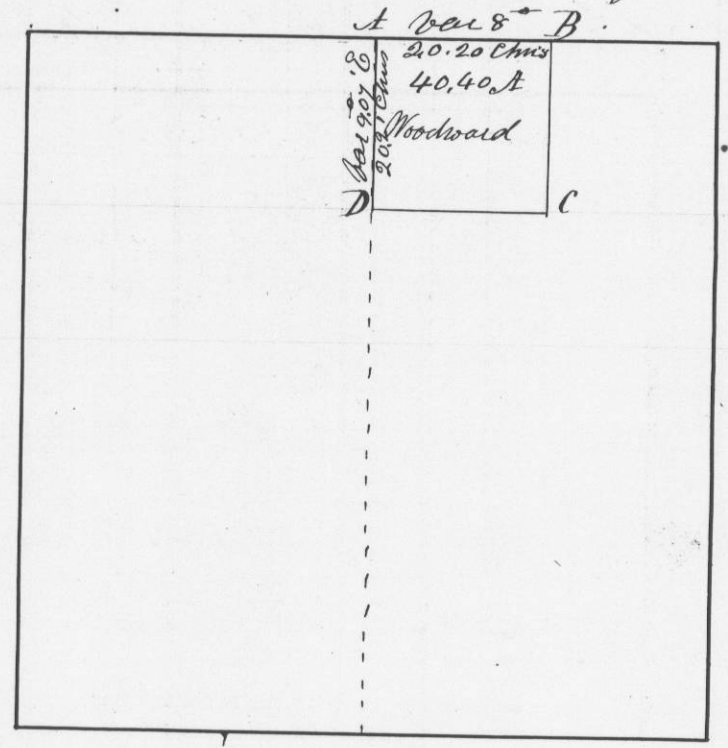


- Bearings at the corners
- at A { N. Oak 30 S 65° W 39 links } 5
  - { B. Oak 12 S 1° E 46 links }
  - at B { B. Oak 8 S 80 1/2° E 20 links } original
  - { W. Oak 6 S 25° W 10 links }
  - at C { B. Oak 14 S 72° E 22 links } original
  - { B. Oak 11 West 7 1/2 links }
  - at D { W. Oak 8 S 31° W 46 links } 9
  - { B. Oak 7 N 80 1/2° E 74 links }

I hereby certify that the above is a true plot and correct minutes of said survey made by me this ninth day of Feb. 1846

Survey made for Michael Woodward of the N.E. 1/4 of Section No. 20 in Town No. 5 North of Range No. 3 West of the 4th principal Meridian in Grant County W. Va. February 10th 1846

Section No. 20 Town No. 5 N. of R 3 West



- Corners
- at A { B. Oak 17 N 71° E 72 links }
  - at B { B. Oak 14 S 63° W 24 links } Original
  - at B set post
  - at C set post
  - at D. set post { B. Oak 12 S 78° W 18 1/2 links }
  - { W. Oak 6 N 30° E 70 1/2 links }

I hereby certify that the above is a true plot and correct minutes of said survey made by me this 10th day of February A.D. 1846

Geo. N. Shunk  
District Surveyor  
G. C. W. V.