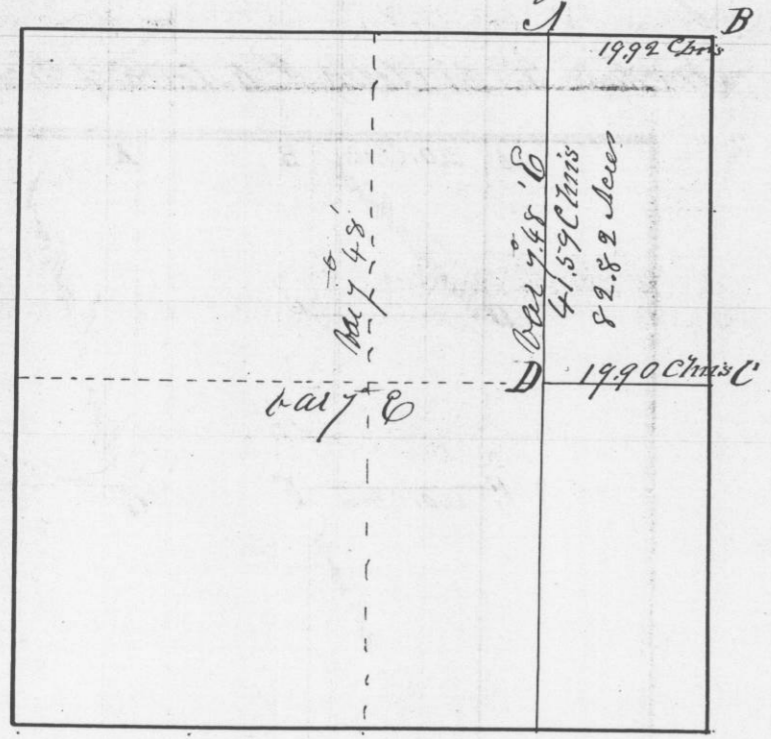


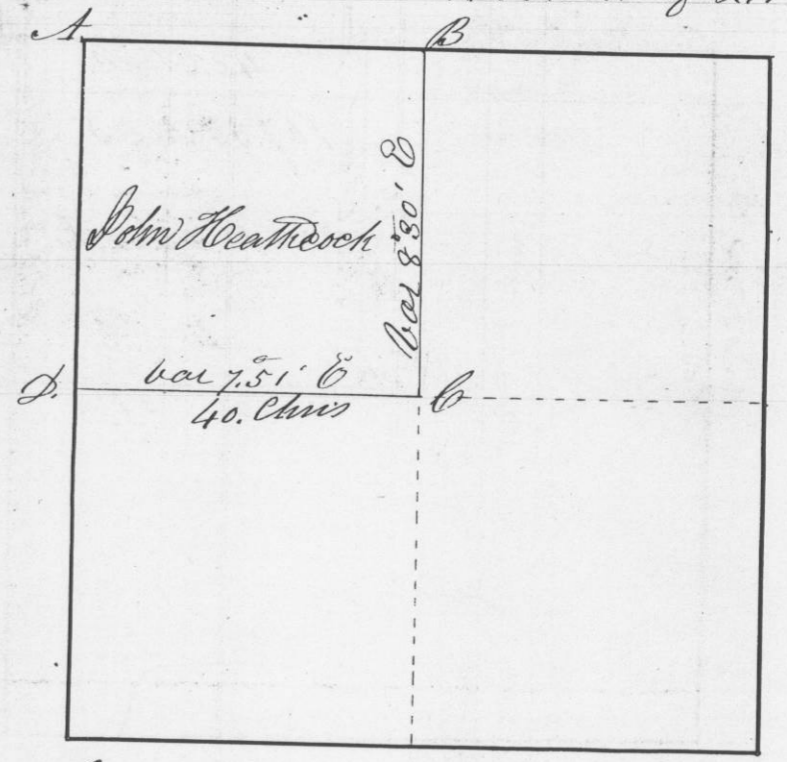
Survey made for John Heathcock of the E 1/4 of the N.E. 1/4 of Section No. 5 in Town No. 5 North of Range No. 1 West of the 4th principal Meridian in Grand County Wis. In February 7th 1846 Section No. 5 Town No. 5 N. of R. 1 W



Bearings at the corners
at A. { B Oak 145 19° E 363 links
 { B Oak 95 48° E 363 links }
at B. { W Oak 75 73 1/2° E 139 links } Original
 { B Oak 95 25° W 146 links }
at C. { W Oak 13 N 56° E 45 links } Original
 { W Oak 20 N 75° W 24 links }
at D. { B Oak 12 N 28 1/2° E 14 links
 { W Oak 14 S 84° W 47 links }

I hereby certify that the above is a true plot and correct minutes of said survey made by me this 7th day of February A.D. 1846
Geo. R. Stuntz
District Surveyor
G. R. S.

Survey made for John Heathcock of the North West quarter of Section No. 32 in Town No. 6 North of Range No. 1 West of the 4th principal Meridian in Grand County Wis. In February 7th A.D. 1846 Section No. 32 in Town No. 6 North of R. 1 West



Corners
at A. { B Oak 15 S 58° W 7 links } Original
 { B Oak 14 N 41° E 38 links }
at B. { B Oak 6 N 21° W 12 links } Original
 { B Oak 8 S 57° E 39 links }
at C. { B Oak 14 N 88 1/2° E 22 links
 { B Oak 18 S 85° W 26 links }
at D. { B Oak 12 S 13° W 204 links } Original
 { B Oak 7 N 61° W 505 links }

I hereby certify that the above is a true plot and correct minutes of said survey made by me this seventh day of February A.D. 1846.
Geo. R. Stuntz
Dist Surveyor