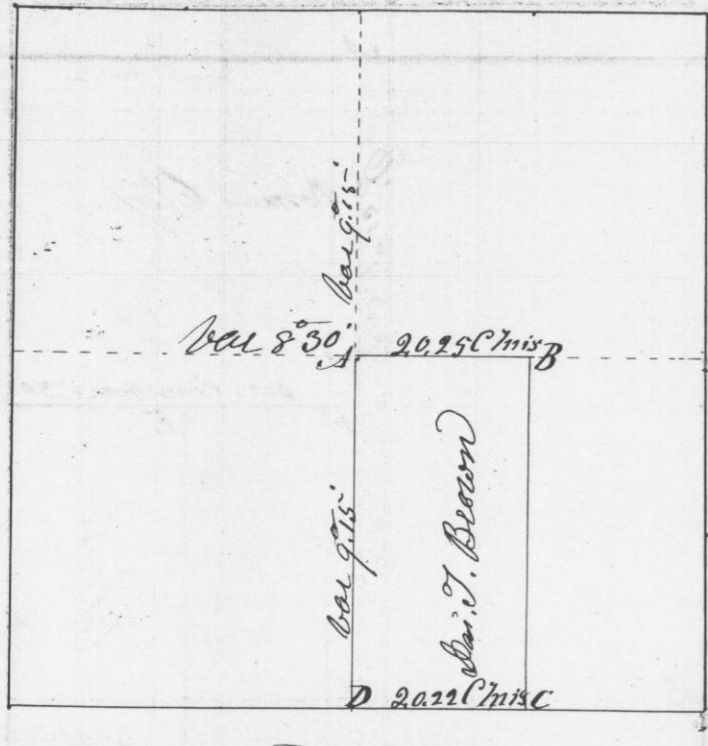


Survey made for James J. Brown of the West half of the S. E. 1/4 of Section No. 15 Town No. 5 North of Range No. 1 West of the 4th principal Meridian in Grant County W. T. January 28th 1846

Section No. 15 Town No. 5 North of R. 1 West



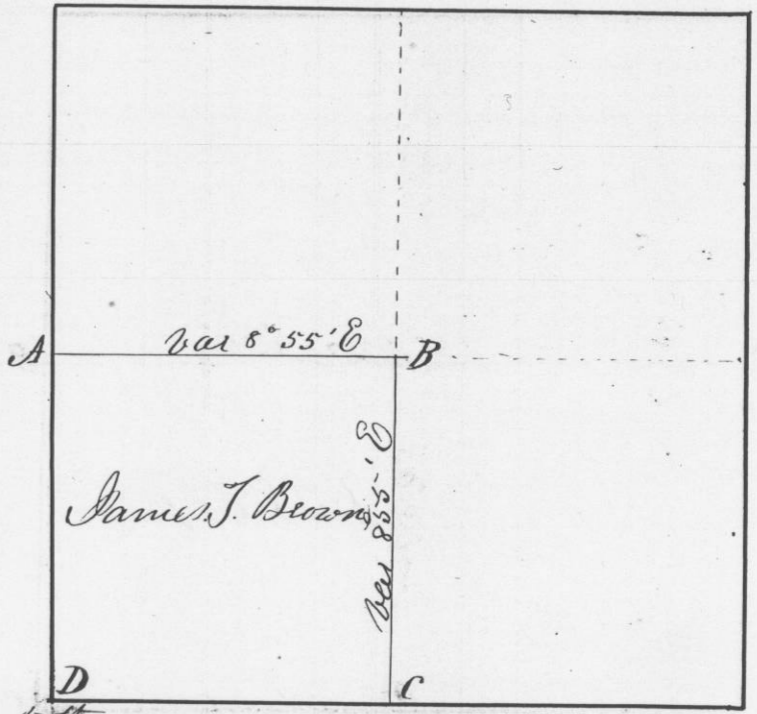
Bearings at the corners

- at A { B Oak 9 N 63 W 7 links }
 { B Oak 15 58 E 10 7 links } 9
- at B { B Oak 8 5 19 W 30 links }
 { B Oak 8 N 19 1/2 E 27 links } 17
- at C set post
- at D set post in the Original mound

I hereby certify that the above is a true plot and correct minutes of said survey made by me this 28th day of January A. D. 1846

Survey made for James J. Brown of the South West quarter of Section No. 10 in Town No. 5 North of Range No. 1 West of the 4th principal Meridian in Grant County W. T. January 29th 1846

Section No. 10 Town No. 5 North of R. 1 West



Bearings at the corners

- at A { W Oak 28 S 78 1/2 E 52 links } Original
 { W Oak 10 S 56 W 25 links } 9
- at B { W Oak 14 N 72 1/2 E 95 1/2 links }
 { W Oak 14 S 27 1/2 E 161 links } 9
- at C { Br Oak 8 S 23 1/2 E 58 links } Original
 { W Oak 9 N 48 1/2 W 53 links } 9
- at D { W Oak 20 S 88 W 72 links } Original
 { W Oak 24 N 69 E 111 links } 9

I hereby certify that the above is a true plot and correct minutes of said survey made by me this twenty ninth day of January A. D. 1846

Geo R. Stumbo
District Surveyor
D. D. Wolf