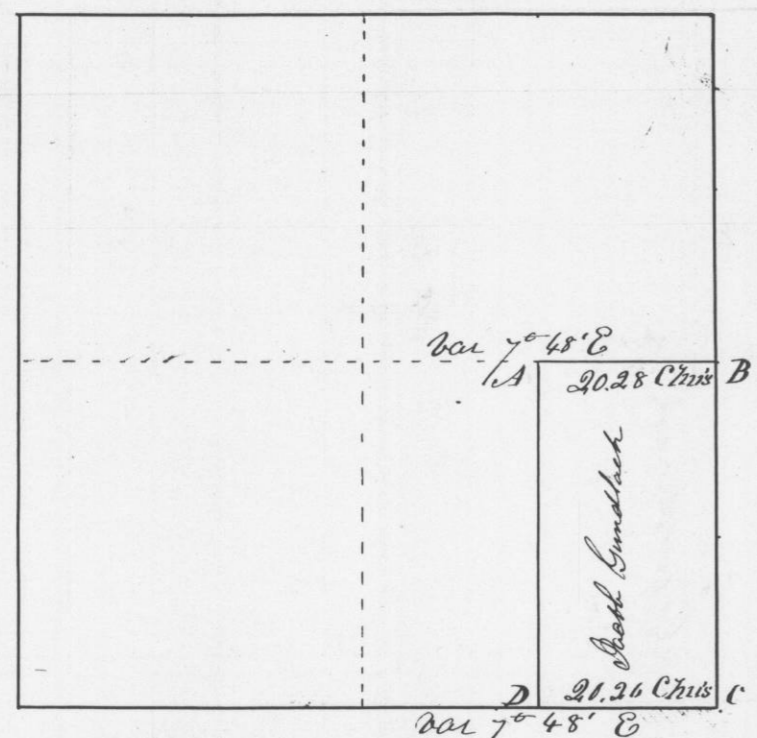


Survey made for Jacob Gundlach of
 the East half of the South East quarter
 of Section N^o 14 in Town N^o 5 North of Range
 N^o 1 West of the 4th principal meridian in
 Grant County W.T. January 23rd 1846

Section N^o 14 Town N^o 5 North of Range 1st W.

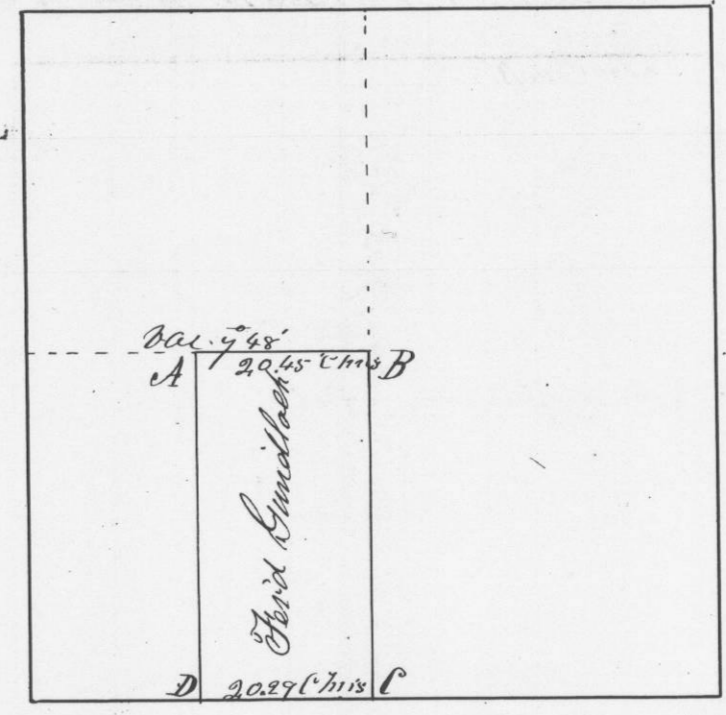


- Beams at A & B 105 2 1/2 E 52 links
- 17 Crosswood 6 N 85 E 4 links
- " at B 1/2 Oak 18 N 20 1/2 E — } Original
- 1/2 Oak 10 46 W 28 7 links
- " at C Post in mound Original
- " at D post

I hereby certify that the above is a true plot
 and correct minutes of said survey made by
 me this twenty third day of January A.D. 1846
 A true record Made Geo. M. Stunt
 Dist Surveyor
 G.C.M.T.

Survey made for Ferdinand Gundlach of the
 East half of the S.W. 1/4 of Section N^o 14 in Town
 N^o 5 North of Range N^o 1 West of the 4th principal
 meridian in Grant County W.T. January 23rd 1846

Section N^o 14, Town N^o 5 North of R. 1 West



Corners

- at A placed a stone in the ground for corner
- at B led post, 1/2 Oak 12 5 4/9 E 350 links
- " C Post in mound
- " D led post for corner

I hereby certify that the above is a true
 plot and correct minutes of said survey
 made by me January 24th 1846

Geo. M. Stunt
 District Surveyor
 G.C.M.T.