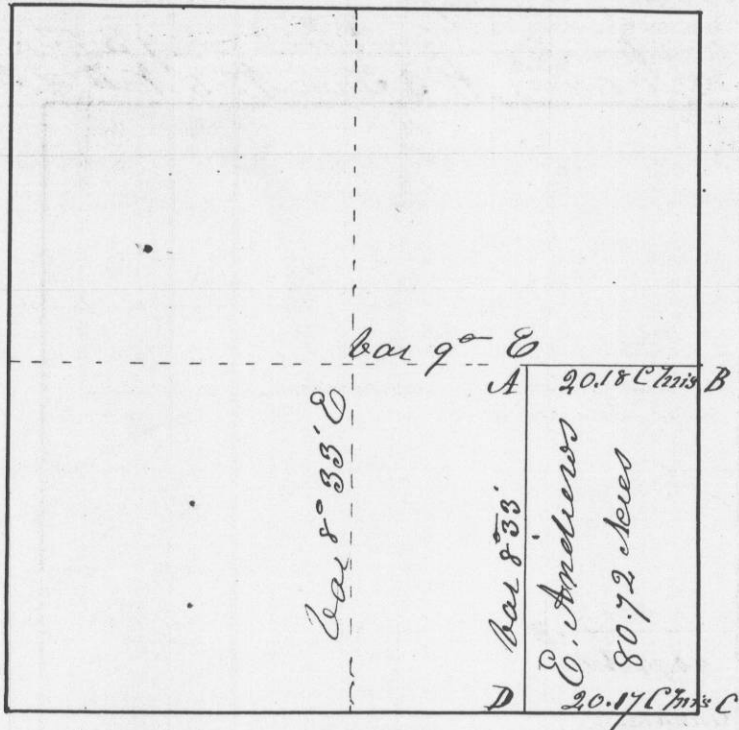


Survey made for Edward Andrews of the S. E. 1/4 of the S. E. 1/4 of Section No. 3 in Town No. 5 North of Range No. 1 West of the 4th Principal meridian in Grant County W. T. January 22nd 1846 Section No. 3, Town No. 5 N. of R. 1. West



Bearings at the corners

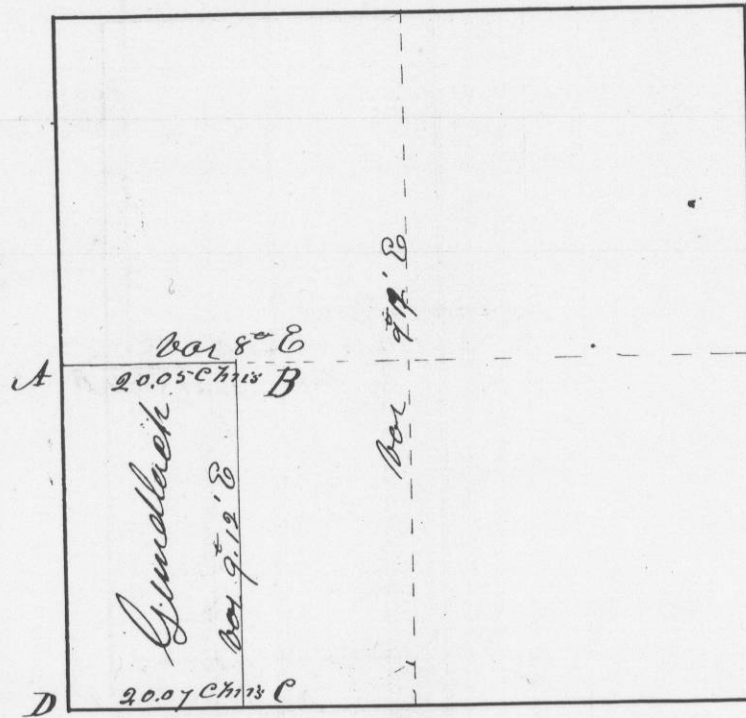
- at A { N. Oak 16 S 27 1/2 E 85 links
N. Oak 14 N 6 W 75 links } Original
- at B { N. Oak 18 S 89 1/2 W 112 links
B Oak 9 S 72 1/2 E 182 links }
- at C { B Oak 10 N 31 W 342 links } original
B Oak 5 N 44 E 248 links }
- at D { B Oak 10 S 18 1/2 E 233 links
B Oak 10 N 84 1/2 E 188 links }

I hereby certify that the above is a true plot and correct minutes of said survey made by me this 22nd day of January A.D. 1846

A true Record, Attest Geo. N. Huntz

Survey made for Jacob Gundlach of the West half of the South West quarter of Section No. 13 in Town No. 5 North of Range No. 1 West of the 4th principal meridian in Grant County W. T. January 28th 1846

Section No. 13, Town No. 5 N. of R. 1. West



Bearings at the corners at A B. Oak 18 N 20 1/2 E - Original
B. Oak 10 N 46 W 28 (links)

- at B set post corner
- at C set post corner
- at D the Original mound

I hereby certify that above is a true plot and correct minutes of said survey made by me this twenty third day of January A.D. 1846

Geo. N. Huntz
Dist. Surveyor
G. C. W. J.