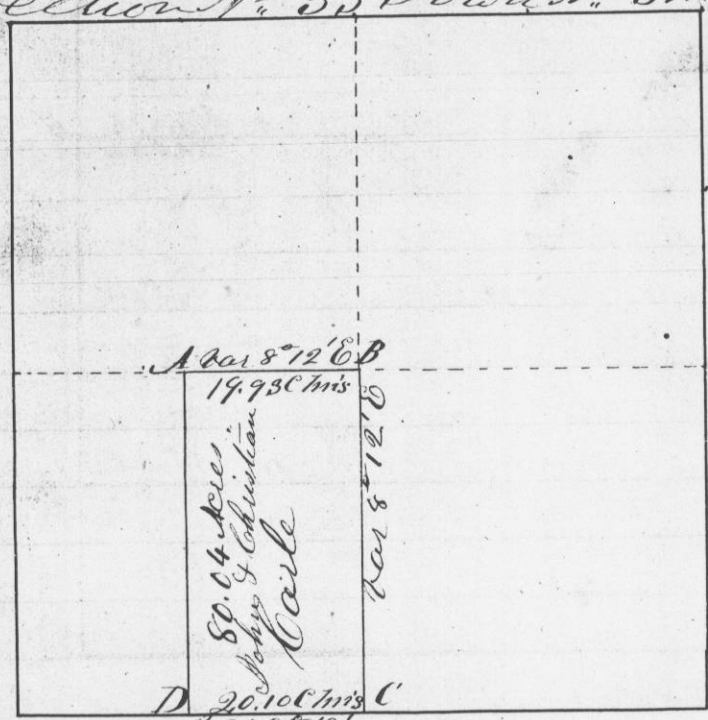


312 No 424

Survey made for John and Christian Carle
 of the E. 1/4 of the South West Quarter of
 Section No. 33 in Town No. 3 North of Range No.
 West of the 4th Principal meridian in Grant
 County W. T. January 9th 1846

Section No. 33 Town No. 3 North of Range No. 1, W.



at the corners bearings at the corners
 { Br Oak 18 N. 44 E 209 links } at C. at Red Cedar point
 { Br Oak 10 N 8 1/2 E 225 links } at D. W. Oak 12 N 21 W 4 links
 { Br Oak 6 N 47 W 7 links } 23 W. Oak 10 N 15 E 48 "
 { Br Oak 8 S 5 1/2 W 112 "

Whereby certify that the above is a true
 record of the plot and minutes of said
 survey made by me January 9th 1846
 Geo. R. Stuntz
 Dist Surveyor
 G. C. W. T.

No. of Survey	For whom made	Page	Tracts or Parts of Sec.	Section	Town
1	Absolum Coburn	1	E 1/2 S.E. qr.	14	3
2	Miles Hollingsworth & John Moss	1	{ N. 1/2 of N.W. qr & N.W. qr of S.W. qr }	33	3
3	Sam. Crocker	2	{ E. 1/2 of N.W. qr & W. 1/2 of E. 1/2 }	do	do
4	Stephen Brock	3	E 1/2 of do	do	do
5	Jas. Durley	"	W 1/2 of S.W. qr	35	do
6	Jno. Myers	"	E 1/2 of S.W. qr	"	"
8	Henry Carl	4	{ S.W. 1/2 N.E. qr and N.E. qr S.W. qr }	4	2
9	do Pullar	5	S.W. qr & N.E. qr S.W. qr	23	3
10	do	6	E 1/2 S.E. qr	22	3
11	G. W. Crull	"	W 1/2 S.E. qr	"	"
12	Road	7			
13	do	8			
15	Jno. Fletcher	9	S.E. qr	5	1
16	Joseph Dixon	20	{ W 1/2 S.E. qr & E 1/2 of S.W. qr & E. qr }	20	do
17	Fredrick Holman	11	E 1/2 S.W. qr	35	do
18	W. T. Russell	"	N.E. qr	35	4
19	Sam. Huntington	12	N. W. qr	"	"
20	Grat Bacon	"	E 1/2 S.E. qr	"	"
21	Geo. W. Israel	13	W 1/2 do	"	"
22	Jno. R. Hurlbut	"	E 1/2 S.W. qr	"	"
23	Chas. H. Bacon	14	N.W. 1/2 of S.W. 1/4	"	"
24	Nathaniel Tenney	"	W 1/2	33	3
25	Mner Carson & Jno Morrison	15	E 1/2	"	"
26	Heirs of Jno Carpenter	16	Fractions 18. 17. 23. 24	4	
27	Sam. Mitchel	17	do	14	3
28	Nicholas Fine (Estate of Rich. Martin)	18	W 1/2 & N.E. qr S.W. qr	23	do
29	S. M. Langworthy & Co.	19	S.E. of S.W. qr	"	"
30	Sam. Druen	"	E 1/2 & N.W. 1/4 of N.W. 1/4	13	"
31	Wm. Sprague	"	N.E. 1/4	"	"
32	Sam. Druen	20	Fraction	"	"
33	Road	21			
34	AIN + W. T. RICHARDS	"	W 1/2 SW 1/4		