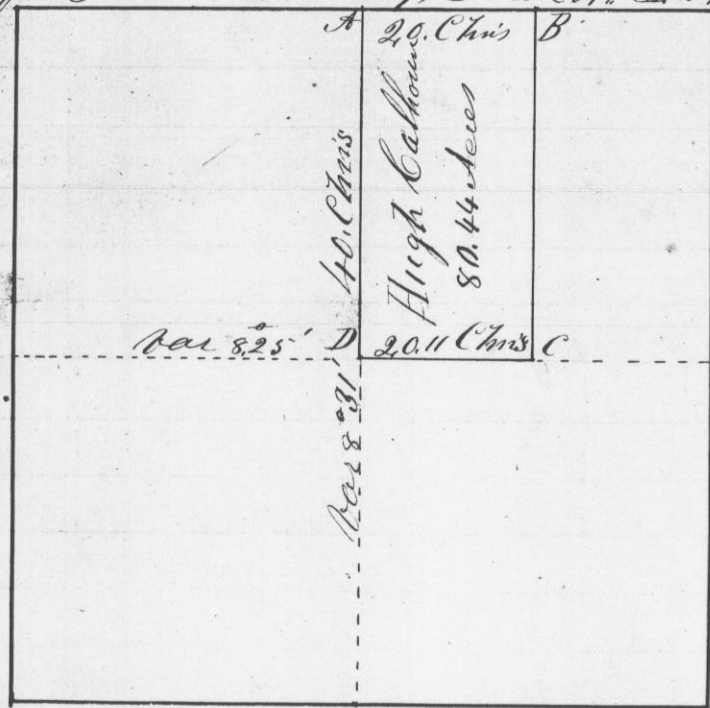


Survey made for Hugh Colhoun of the
 West 1/2 of the N.E. 1/4 of Section N^o 27,
 in Town N^o 2 North of Range N^o 1 West of the
 4th Principal Meridian, in Grant County
 W.T. December 17th A.D. 1845.
 Part of Section N^o 27, Town N^o 2 North R. 1 West

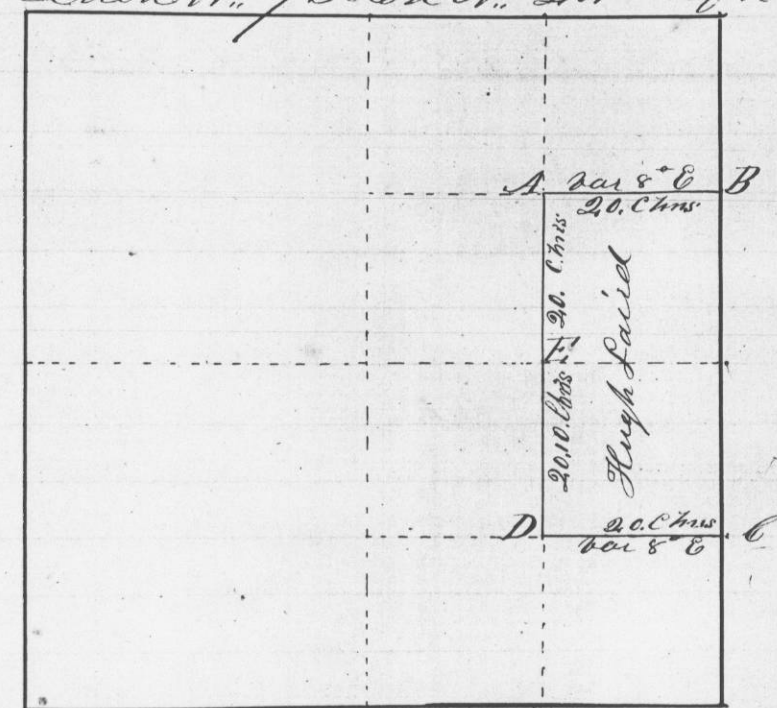


The corners are all established by placing stones
 in the ground and raising mounds of earth
 about them

I hereby certify that the above is a true
 plot and correct minutes of said survey
 made by me as before said

A true record, Attest,
 Geo. R. Huntz
 District Surveyor
 G.C.W.T.

Survey made for Hugh Laird of the S. 1/2
 of N.E. 1/4 and the N.E. 1/4 of S.E. 1/4 of Section
 N^o 7 Town N^o 2 North of Range N^o 1 West
 of the 4th Principal Meridian in Grant County
 W.T. December 18th 1845
 Section N^o 7 Town N^o 2 North of R. 1 West



Bearing trees at the corners, Bearing trees at the corners

- D A { Bl Oak 18 S 86° E 35 links at C, post
- 16 { W Oak 16 S 10° W 34 " " D, post
- B { Bl Oak 12 N 62° E 15 " " E { Bl Oak 18 N 65° E 26 links
- 14 { W Oak 14 N 2° W 2.5 " " 17 { Bl Oak 5 S 41° E 26

I hereby certify that the above is a true
 record of the plot and minutes of said
 survey made by me Dec 18th 1845

Geo. R. Huntz
 District Surveyor
 G.C.W.T.