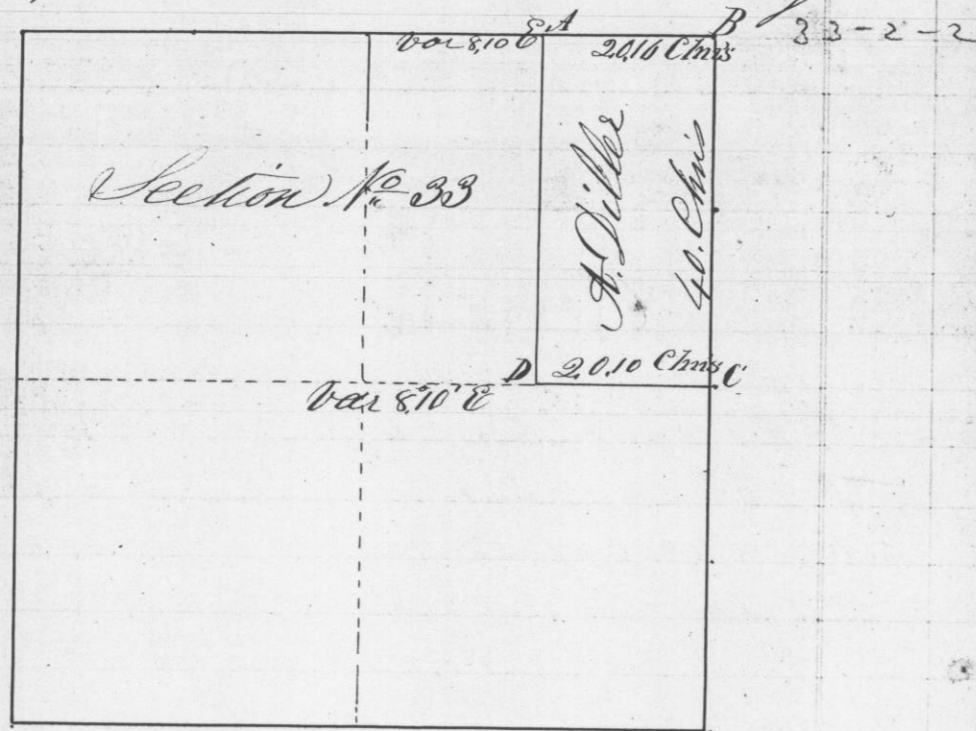


Survey made for A. Dilke of the East 1/2 of the N. E. 1/4 of Section No. 33, Town No. 2, North of Range No. 2, West of the 4th principal meridian Grant County W.T.

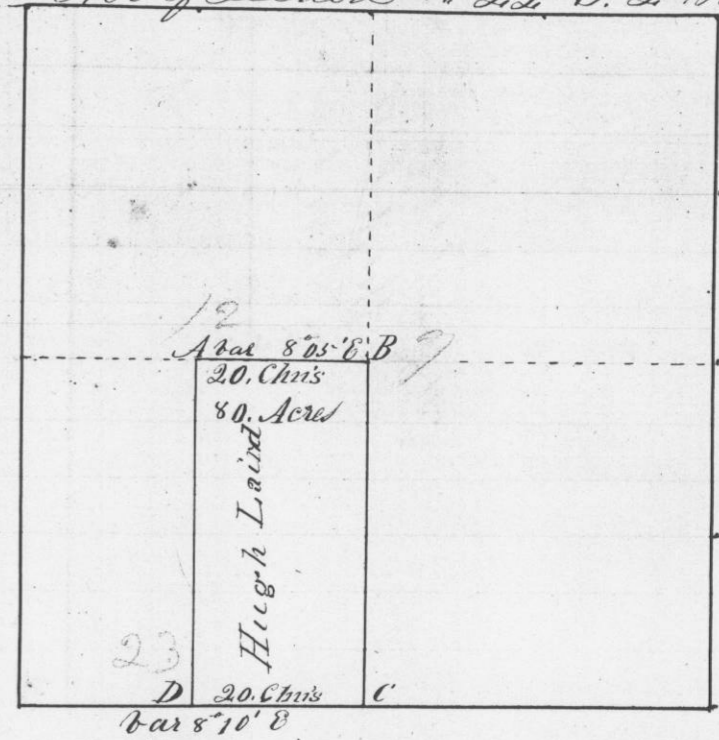


A, B, C, the Original bearing trees are standing at D. B. Oak 5 S 66 1/2 E. 50 links  
 B. Oak 9 S 48 W 180 links 7  
 A. B. Oak 5 N 80 W 33  
 B. Oak 14 S 20 W 147 links 15

Whereby certify that the above is a true record of the plot and minutes of said Survey made by me this 10th day of December A.D. 1845

Geo. W. Stump  
District Surveyor  
G.C. W.T.

Survey made for Hugh Laird of the W 1/2 of the S. W. 1/4 of Section No. 22, in Town No. 2 North of Range No. 1 West of the 4th Principal Meridian Grant County W.T. December 17th A.D. 1845 Plot of Section No. 22, T. 2, R. 1 West



The corners are all established by placing a stone in the ground and raising a mound of earth about them

Whereby certify that the above is a true record of the plot and minutes of said Survey made by me as before said

Geo. W. Stump  
District Surveyor  
G.C. W.T.