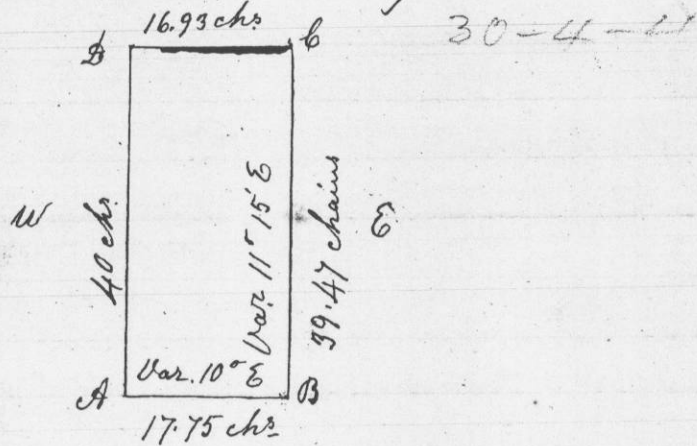


Survey made for Orris McCartney, Agent for John C. Harris of the W. 1/2 of N.W. 1/4 of Section 30 Town four (4) of Range four (4) west of the 4<sup>th</sup> Principal Meridian in Grant County W. T.



- Dr. Post A. Original }
  - 1/8 Post B R.O. 22 N 13 E 3.77 Links } 12
  - W.O. 20 N 38 1/2 W 3.23 " }
- 1/8 Post C R.O. 6 N 11 1/2 E. 96 " } 10
- W.O. 13 N 42 3/4 W. 57 " }

See Corner Original at D }

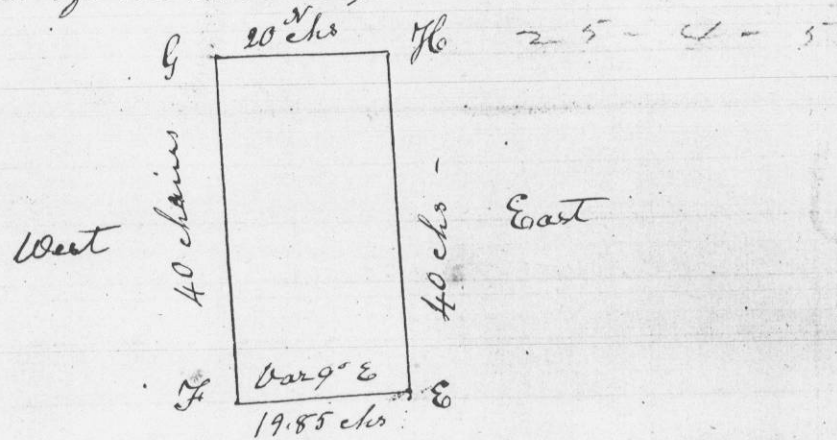
Commencing at Quarter Post A. Original on Town line East 17.75 chains to 1/8 Post B. - North 39.47 chains to 1/8 Post C. West 16.93 chains to Sec. Corner on Town line - South 40 chains to Beginning

I hereby certify that the above is a correct Record of Survey made by me Feb 11<sup>th</sup> 1845.

Stephen Mahood Dep. District Surveyor, G. C. W. T.

N.B. The above Survey ought to have been No 369 and the following No 370

Survey made for Orris McCartney Agent for John C. Harris of E. 1/2 of N.W. 1/4 of Section 25 in Town four of Range four west of the 4<sup>th</sup> Principal Meridian in Grant County W. T.



- Dr. Post E in Centre of Section
- R.O. 6 S 54 E 25 Links } 7
- W.O. 18 N 83 W 89 " }

- 1/8 Post F Br Oak 22 N 84 E 4.79 Links } 12
- R.O. 7 N 27 1/4 W 3.06 " }

- 1/8 Post G - Post in Mound in Ponds Ploughing } 3
- 1/4 Post at H. Original } 3

Commencing at Dr. Post E. in Centre of Section - Thence west 19.85 chains to 1/8 Post F. Thence North 40 chains to 1/8 Post G. in Ponds Ploughing - East 20 chains to Dr. Post H. Original - Thence South 40 chains to Beginning

I hereby certify that the above is a true and correct Record of said survey made by me February 11<sup>th</sup> 1845.

Stephen Mahood Dep. District Surveyor G. C. W. T.