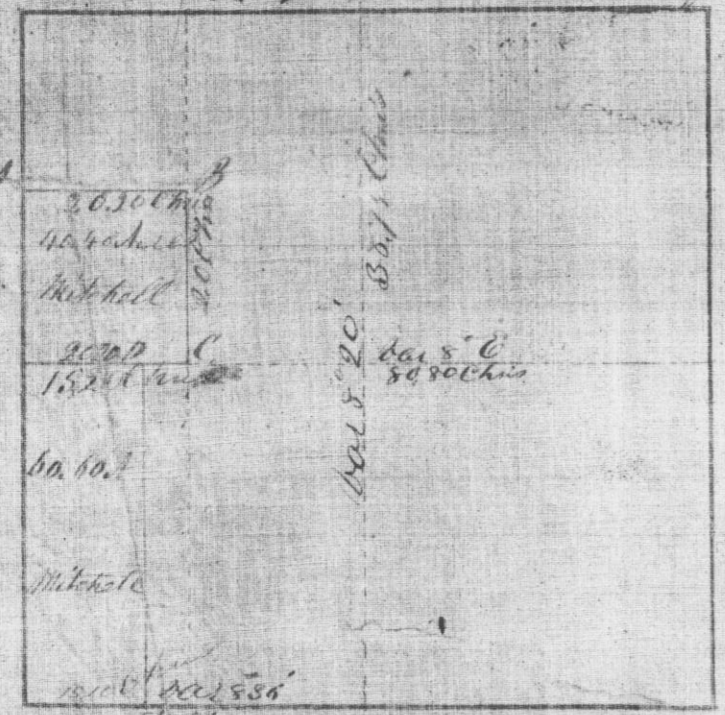


No. 474

Survey made for Samuel Mitchell
 of the E. 1/2 of S.W. 1/4 of 20 acres off of the
 E side of the N. 1/2 of S.W. 1/4 of Section
 No. 3 North of Range No. 1 West of the
 4th Principal meridian G.C.M.
 by the following diagram of the
 Section No. 4 in Town No. 3 N. of R. No. 1 West

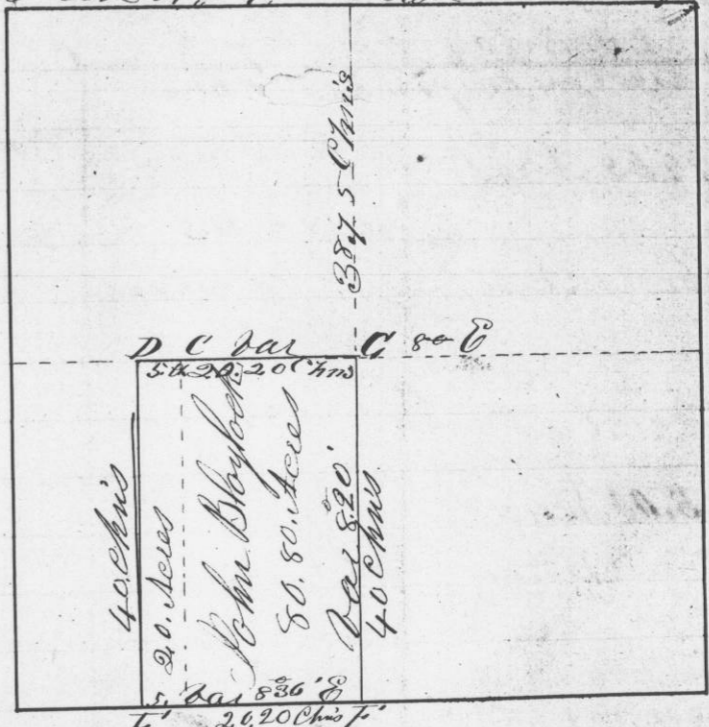


Bearings at the corners
 at M. Oak 12 S 28 E 29 links at D. B. Oak 6 N 86 1/2 W 14
 W Oak 14 N 75 E 10.5 " U. Oak 12 S 71 E 45
 B. Oak 6 N 68 E 38 " E M. Oak 14 S 41 1/2 W 4
 " Oak 7 S 71 W 45 " W. Oak 18 N 32 W 2.3
 C. Oak 6 N 31 W 34
 B. Oak 7 N 75 1/2 E 62.

I hereby certify that the above
 is a true and correct copy of said survey made
 by the following person

No. 415

Survey made for John Blythe
 of the E. 1/2 of S.W. 1/4 of 20 acres off of the
 E side of the N. 1/2 of S.W. 1/4 of Section
 No. 3 North of Range No. 1 West of the
 4th Principal meridian Grant County
 N.T. Nov 27th 1845
 Section No. 4 in Town No. 3 N. of R. No. 1 West



Bearings at the corners
 D. B. Oak 6 N 86 1/2 W 14 links at F Original
 U. Oak 12 S 71 E 45 links " G. B. Oak 9 S 60 E
 M. Oak 12 S 41 1/2 W 41 " B. Oak 6 N 81 W
 W. Oak 18 N 32 W 2.3

I hereby certify that the above is a
 true record of said survey made by
 this 27th day of Nov. A.D. 1845
 Geo. N. Stutz
 District Surveyor
 G.C.M.S.