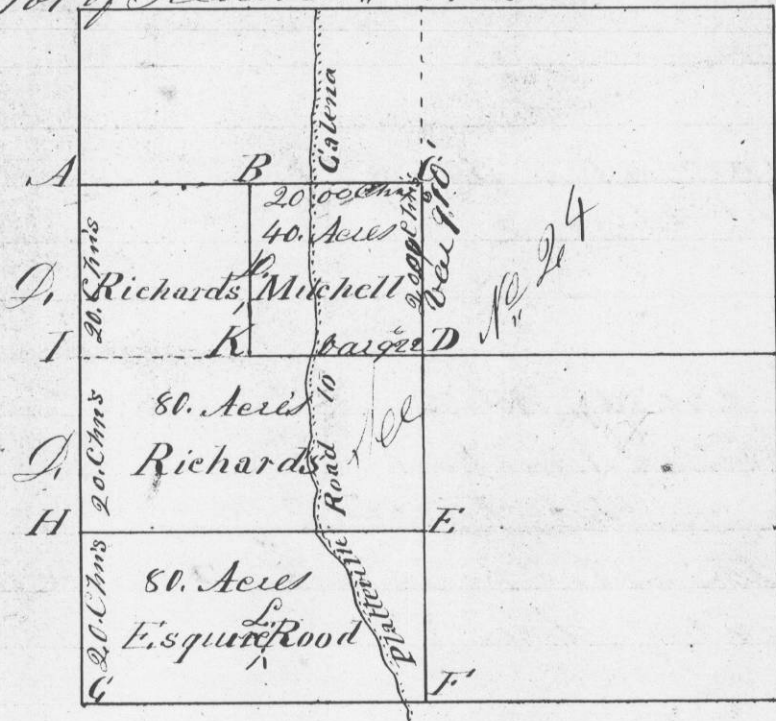


Survey made for S. Rood, W. Richards and David Mitchell in Section No. 24 Town No. 1 North of Range No. 1 West of the 4th Principal meridian in Grant County W.T. November 15th 1845 in the S.W. 1/4 & S.E. 1/4 of N.W. 1/4 & S.W. 1/4 of N.W. 1/4 Length and condition of the lines marked on the diagram. Corners are all posts set in mounds, pits 5 links East At the corner K, a Hickory 5 inches in dia. Bear S. 67^o W. 6 Plot of Section No. 24 in T. 1 N. R. 1 West



I hereby certify that the above is a true record of said Survey made this fifteenth (15) day of Nov. A.D. 1845.

Geo. R. Shultz
Dist. Surveyor
G. C. W. T.

Survey made for George Collier in 1/4 of Section No. 8 Town No. 3 No. 1 West of the 4th Principal meridian in Grant County W.T. Also of 1/4 of Section No. 9 of same Town section No. 8 & Section No. 9



Beaming at the corner to Original	Beaming at the corner at G. Be. Oak 16. N 21 W 2
B. Be. Oak 8. N 47 E 25 links	Be. Oak 12. S. 35 E 11
Be. Oak 18. S 88 E 55	Be. Oak 10. N 42 W 11
C Original	Be. Elder 10. S. 35 E 11
D. W. Oak 14. N 18 W 131	Be. Oak 8. N 34 W 14
W. Oak 15. N 4 E 195	Be. Oak 10. N 87 E 7
E. Be. Oak 9. S 89 E 185	
Be. Oak 6. S 45 E 128	
F Original	

I hereby certify that the above is a true record of the Plot and mounds of said Survey made by me this 20th day of Nov. A.D. 1845.

Geo. R. Shultz
Dist. Surveyor