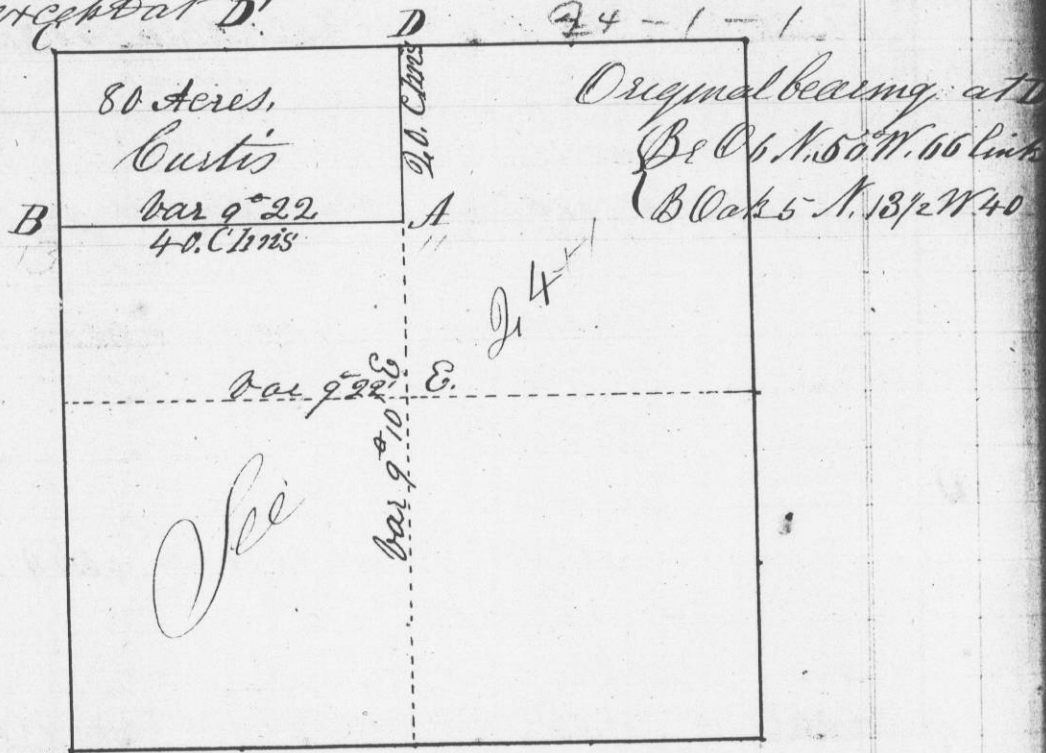


Survey made for the Heirs of Lewis Curtis of the North half of the N.W. quarter of Section No 4 Town No 1 North of Range No 1 West of the 4th Principal Meridian Grant County W.T. Length and bearing of the lines marked on the diagram. Corners all posts in mounds, Pit 5 links except at D.

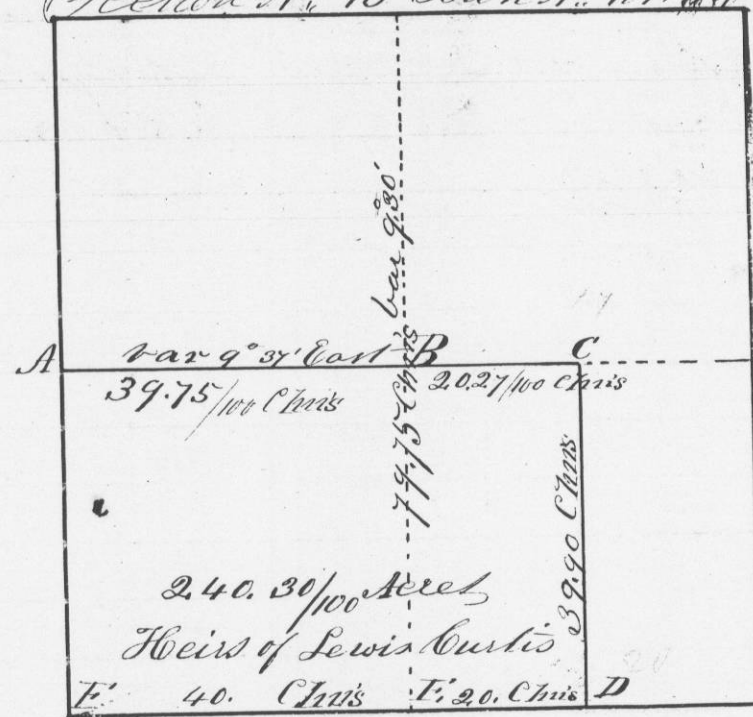


Corners at A & B established by setting posts in mounds

I hereby certify that the above is a true and correct copy of the plot and minutes of said survey made by me as before said

Geo. R. Shultz
Dist Surveyor
G.C.W.T.

Survey made for the Heirs of Lewis Curtis of the S.W. 1/4 and N. 1/2 of S.E. 1/4 of Section 13 Town No 1 North of Range No 1 West of the 4th Principal meridian in Grant County W.T. November 14th 1845 Length and bearing of the lines marked on the diagram. Corners all posts set in mounds of Section No 13 Town No 1 North of Range No 1 West



The posts at the corners B & D are set in mounds made of Stone

I hereby certify that the above is a true and correct minutes of said survey made by me Nov 14th 1845 Geo. R. Shultz
District Surveyor

G.C.W.T.

A true record. Attest Geo. R. Shultz
Dist Surveyor
G.C.W.T.