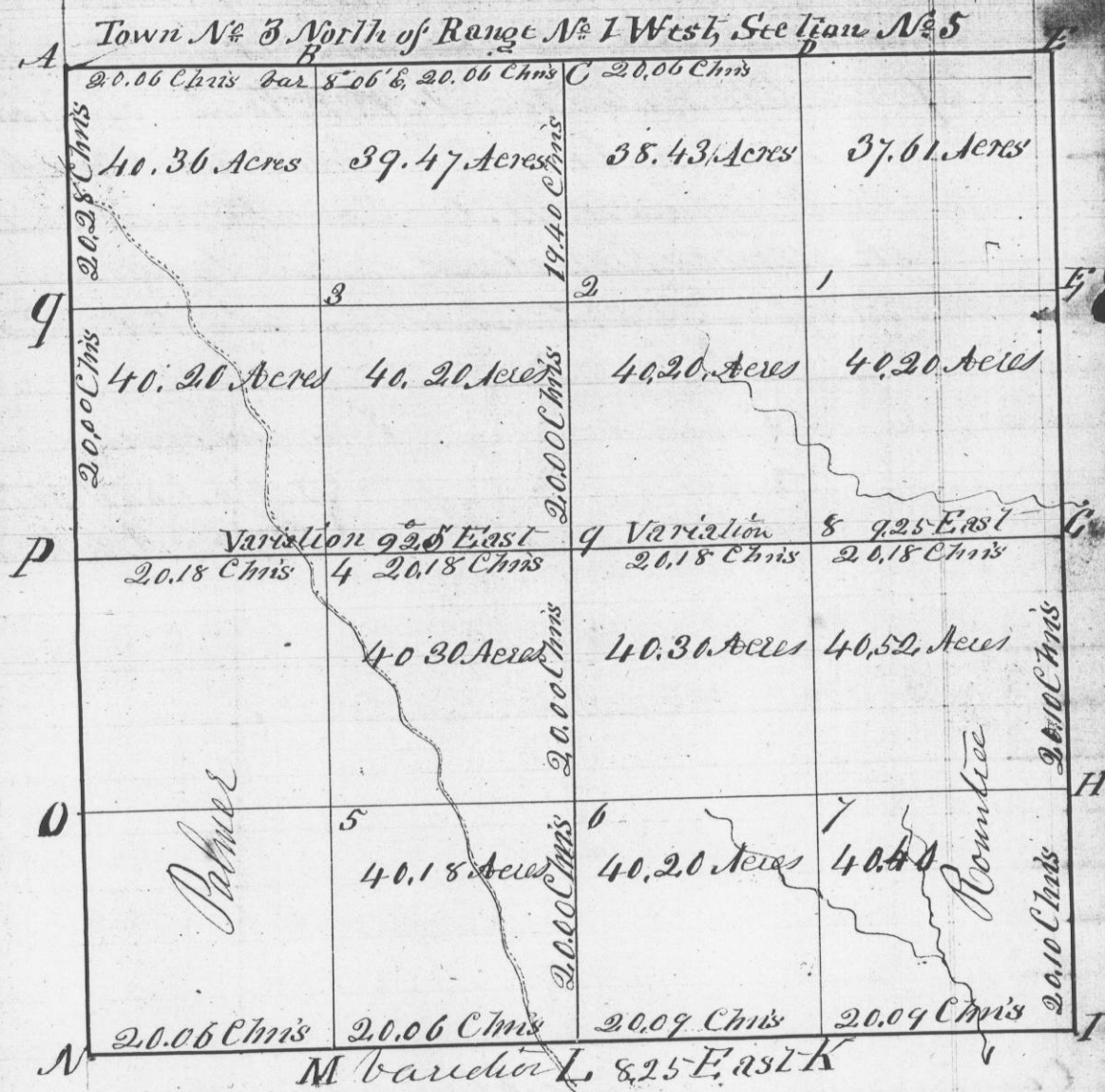


Survey made for Geo Collier in Section No 5
 Town No 3 North of Range No 1 West of
 the 4th Principle meridian Grand County W.V.
 Being a division of said Section into forty Acres
 lots Length and variation of the lines
 given on the diagram

- Corner B { Blk Oak 65 W 13.
- 10 { W. Oak 12 S 3 1/2 E 100 10
- " " C { W. Oak 12 inches in diameter Marked 1/4 S.
- 5 { This corner is set 97 links N. of the corner 1/4
 Foot set on side of Sec 32 T. 4 N. R. 10 W.
- " " D { W. Oak 12 S 22 W 86 lks
- 15 { W. Oak 12 S 16 E 116 lks
- " " E { W. Oak 24 S 11 E 29 lks
- 14 { W. Oak 14 N. 75 E 105 lks
- " " F { Ironwood 65 29 W 9 lks
- 19 { Elm 5 N 5 8 E 3 links
- " " G { W. Oak 8 N 54 1/2 W 48 lks
- 20 { Blk Oak 10 N 89 E 9 lks
- " " H { Lynn 10 S 11 W 70 lks
- 23 { Sugar 10 N 41 E 193 lks
- " " I { No corner set
- " " J { Blk Oak 8 S 63 W 73 lks
- 13 { W. Oak 14 S 84 1/2 E 185 1/2 lks
- " " The rest of the corners on the Section lines
 were set in the original survey
- " " 1 { W. Oak 10 S 60 1/2 E 28
- " " 18 { W. Oak 24 N 31 E 46
- " " 19 { W. Oak 20 S 82 1/2 E 17
- " " W. Oak 15



I hereby certify that the above is a true
 and that the foregoing are true minutes
 of said survey

A True Record
 Geo. R. Huntz
 Dist Surveyor
 G. C. M. S.