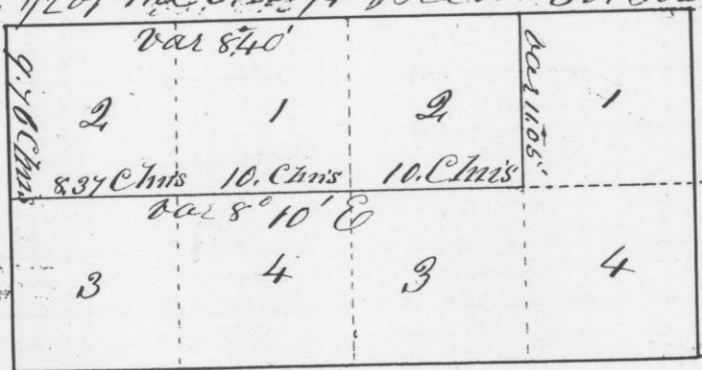


Survey made for D. G. Sherman and Co of
 a Mineral Lot on Section No. 30, Town No. 4
 North of Range No. 14 West of the 4th Principal
 Meridian in Grant County N.T.
 Commencing at the N.W. corner of Lot
 No. 1 in the N.E. 1/4 of the S.W. 1/4 of said
 Section. Thence South 10 chains set post
 corner of lots 1, 2, 3 & 4 in said N.E. 1/4 of S.W. 1/4.
 Thence West (bar 8° 10' E) 88.37 chains to
 the section line and set post corner of
 Lot 2 & 3 in the N.W. 1/4 of S.W. 1/4 of said Section.
 Thence North to the 1/4 post 9.76 chains corners
 Thence East to the place of beginning, being
 Lot No. 2 in the N.E. 1/4 of the S.W. 1/4 & Lots
 Nos 1 & 2 in the N.W. 1/4 of the S.W. 1/4 of said Sec
 N. 1/2 of the S.W. 1/4 of Sec. No. 30, Town 4 R. 14

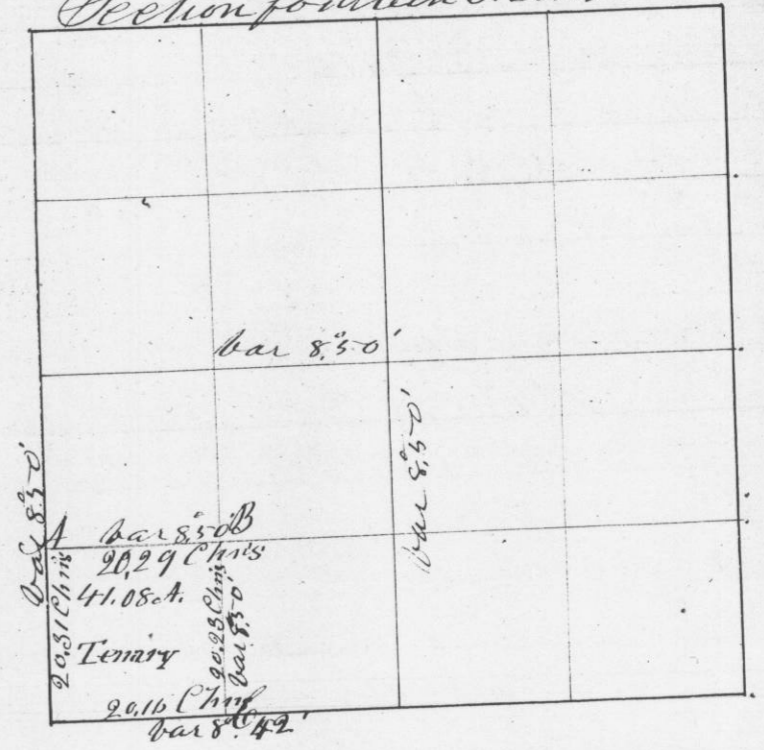


I hereby certify that the above is a true
 record of the plot and minutes of
 said Survey made September 23rd 1845
 Geo. R. Stanton
 Deputy Dist. Surveyor
 G. C. N. T.

Survey of the S.W. 1/4 of the S.W. 1/4 of
 Section No. 14 of Town No. 3 North of Range
 No. 1 West of the 4th Principal meridian Grant
 County, N.T.; made for William Tenary
 Oct 31st 1845
 Length of the line on the South side 20.16 Chns
 " " " " " North side 20.29 Chns
 " " " " " West side 20.31 Chns
 " " " " " East side 20.23 "

Containing forty one acres & eight hundredths
 Corner set in mounds Except at B

Section fourteen T. 3 North R. 1 West



I hereby certify that the above is
 a true record of said Survey.
 Oct 31st 1845

Geo. R. Stanton
 District Surveyor
 G. C. N. T.