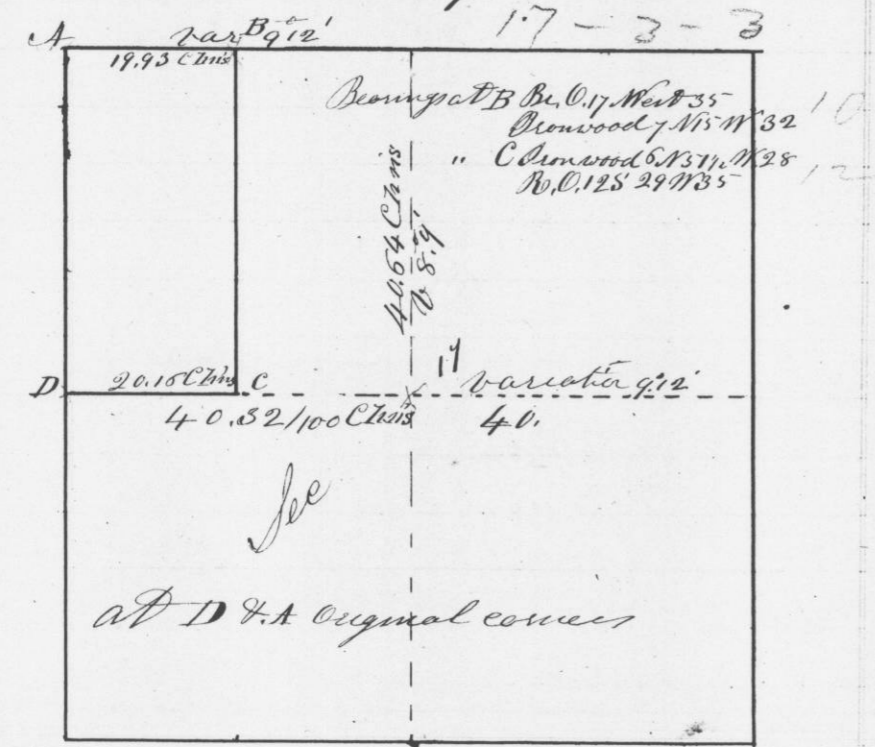


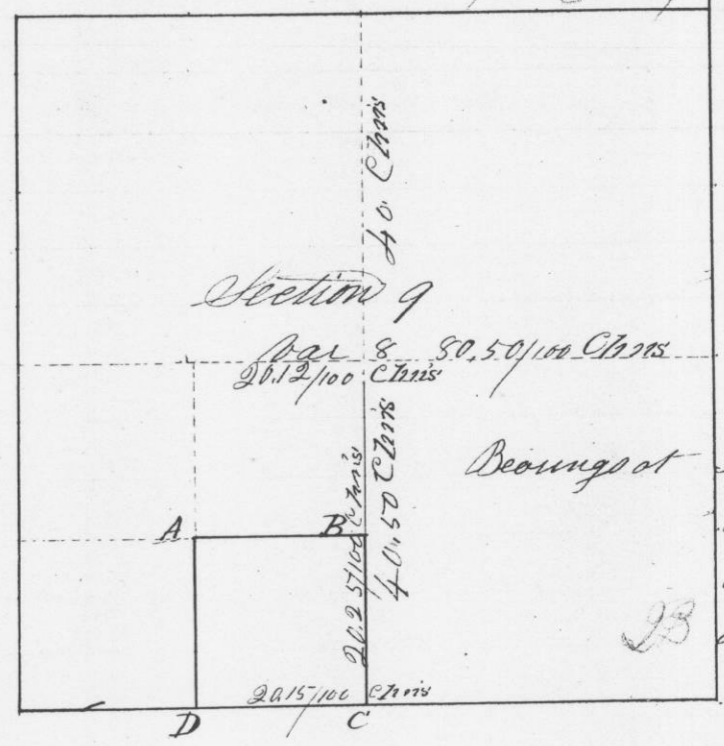
Survey made for Mrs Roberts of the M<sup>r</sup> of  
 the N.W. 1/4 of Section 17 Town 3 North Range  
 No. 3 West of the 4<sup>th</sup> Principal Meridian G.C.W.S.  
 Commencing at the 1/4 post on the West side  
 Thence East bar 830' E.  
 80.32 Chms Intersect 98 links South of the 1/4 post  
 on the E. side Corrected bar 912'  
 North through the center bar 830'  
 80.78 Intersect 50 links West of post  
 Corrected variation 89' E  
 West from the 1/4 post on North side 69'  
 39.85 Intersect 14 N. of section corner  
 Corrected variation 912'



I hereby certify that <sup>the</sup> above is a true record of  
 the plot and original field notes of said  
 Survey made by me Aug 28<sup>th</sup> A.D. 1845

Geo. R. Stuntz  
 Dep<sup>y</sup> Dist Surveyor  
 for G.C.W.S.

Survey made for Samuel White at the request  
 of Edward Estabrook; of the S.E. 1/4 of the  
 S.W. 1/4 of Section 9 of Town 3 North of range 1 West  
 of the 4<sup>th</sup> Principal Meridian Grant Co. W.S.  
 Commencing at the 1/4 post on the South side of  
 said section; thence North Variation 9' E  
 80.50 Intersected North side of section 105 links West  
 of 1/4 post Corrected Variation 8.15  
 West through the center of section 108.15' E  
 80.50 Intersected West side 35 links South of post  
 Corrected bar 8' E September 3<sup>rd</sup> A.D. 1845



I hereby certify that the above is a true record of the  
 plot and minutes of said survey made by me as  
 before said

Geo. R. Stuntz  
 Dep<sup>y</sup> Dist Surveyor  
 for Grant Co. W.S.