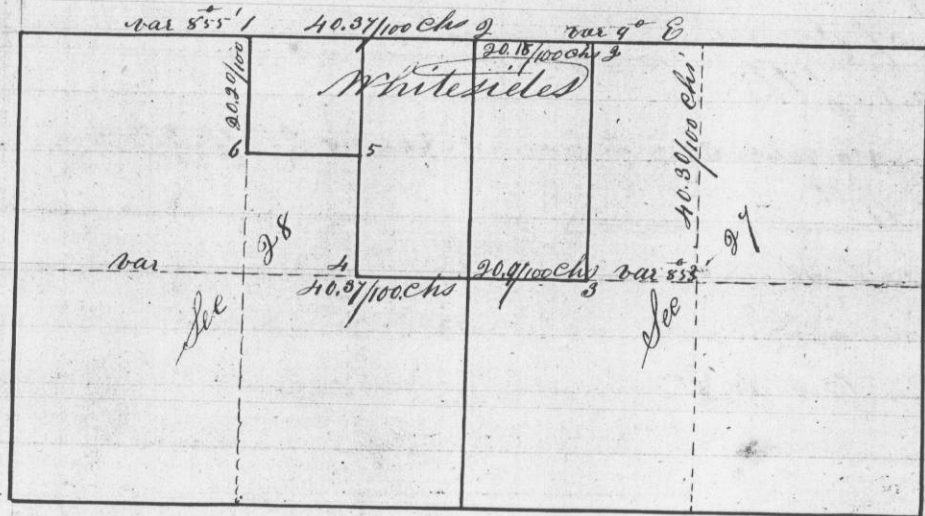


Survey made for William Whitesides of the N¹/₂ of the North W¹/₄ of section 27 and the E¹/₂ and N.W. ¹/₄ of N.E. ¹/₄ of Section 28 Town 6 North Range 4 West of the 4th Principal meridian E.C. W.

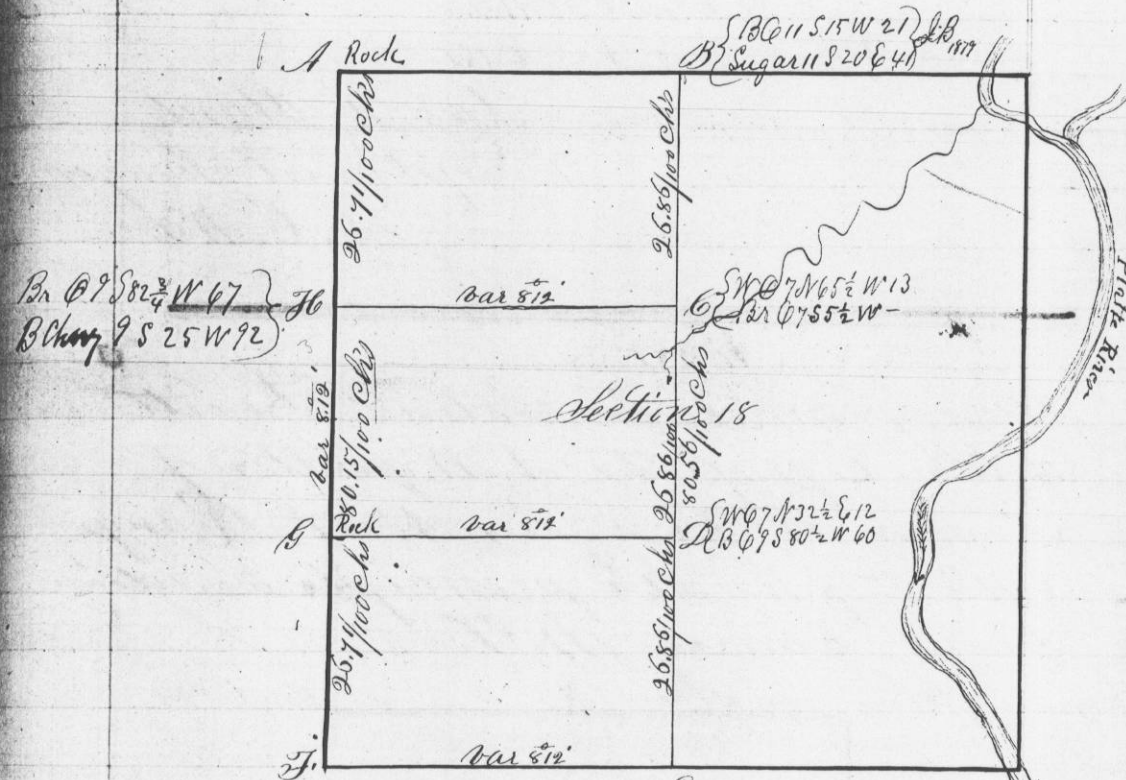


The corners are all Stone in mound
At A W. Oak 5 Bears N 71 1/2 W 49 1/4
" B Br Oak 14 N 1° E 2.11
" C Br Oak 5 S 41 1/2 E 27 1/2

I hereby certify that the above is a true record of said survey made by me May 23 & 24th A.D. 1845

Geo. R. Huntz
Dept Dist Surveyor
Grant County W.T.

Survey made for Gottfried Kreiser May 31st 1845
A division of the west 1/2 of section 18 Town 2 Range 7 into three equal parts



Bearings
at A. W. Oak 61 N 19 1/2 W 195
" Double Poles 15 S 41 E 207
B Br Oak 12 S 50 E 29
" Ironwood 55 75 N 18
C Br Oak 12 N 54 1/2 W 159
" W. Oak 15 S 78 1/4 W 156
D W. Oak 15 inches diameter
at E. Sugar 12 N 67 N 174
" Hickory 6 S 65 N 210
" W. Oak 22 S 40 N 153
" W. Oak 14 N 17 E 96
" G W. Oak 20 N 12 E 33
" W. Oak 14 S 2 N 73
" H. W. Oak 20 N 53 1/2 E 174

I hereby certify that the above is a true record of said survey made by me May 31st 1845

Geo. R. Huntz
Dept Dist Surveyor
G.C. W.T.

Lines reestablished Nov 10th 1879
Joel Barber & Son