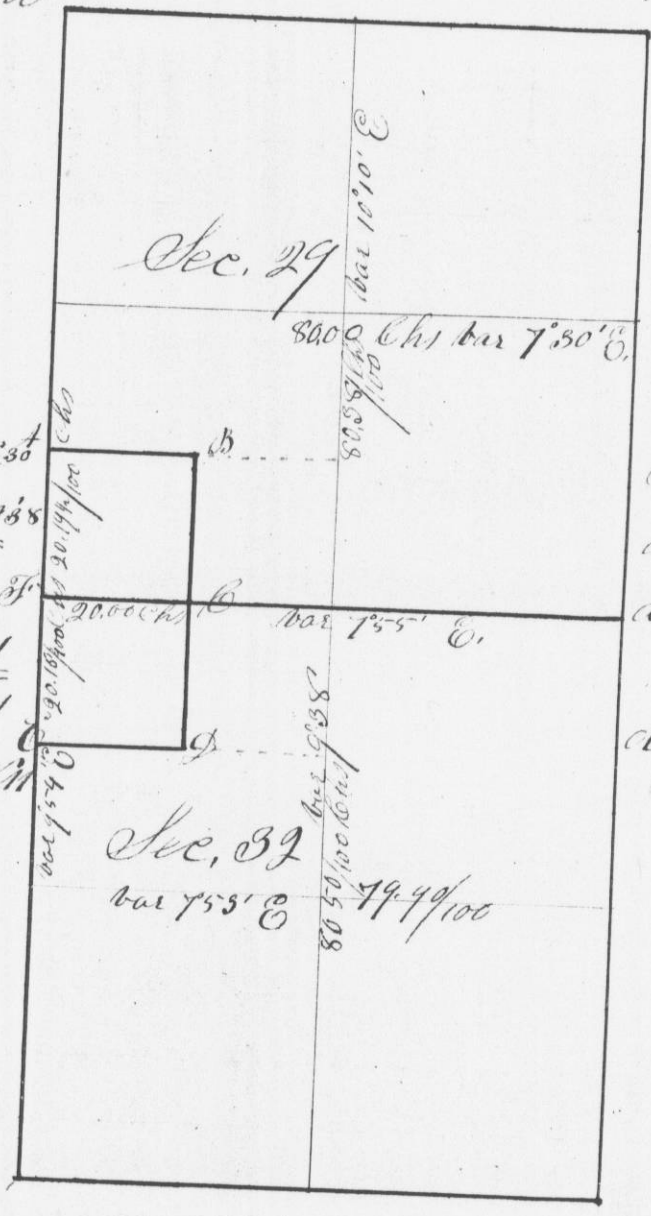


to rawford and
S 1 R 1 W of the
as is shown
diagram

Survey made for Francis De Sasso at the
request of Augustus Conrad his agent in
Sections 29 & 32 T. 4. R. 4. W. of the 1st P.M.
in Grant Co. M.S. as is shown by the
following diagram



Bearings
 at A (W. C. 10 185 1188
 R. C. 5 14 112 31
 R. C. 8 18 25 1131
 W. C. 15 17 11 21
 R. C. 16 18 53 11 11

Bearings
 at B Sugar 12 585 1144
 at C W. Elm 3 130 116
 at D Br C. 8 185 11355
 W. C. 9 15 74 1124

and
 above is a true
 made by me on
 the 9th & 10th days of August A.D. 1844
 H. A. Wilcox
 Dist. Sur. of G.C. M.S.

I hereby certify that the above is a true
 record of said survey made by me on
 the 9th & 10th days of August A.D. 1844
 G. R. Huntz
 Dept. Dist. Surveyor
 of G.C. M.S.