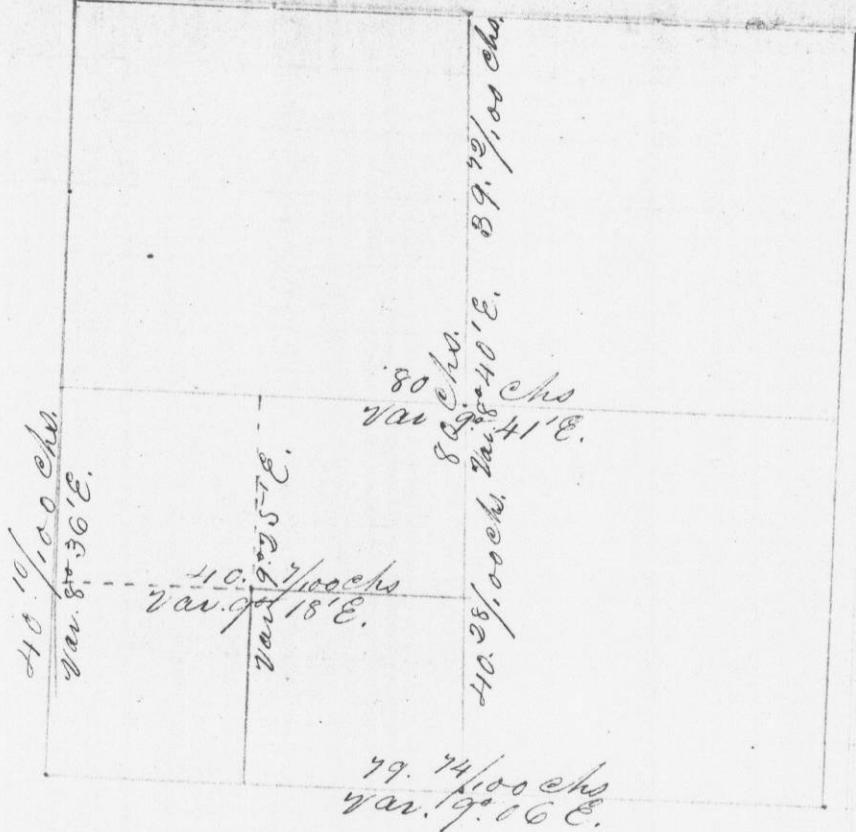


244

No 356

Survey made for Jefferson Crawford and John Edwards, in Section 25, T1 R1 W. of the 4<sup>th</sup> P.M. in Grant Co. Mo., as is shown by the following diagram

request of Sections in Grant following diag



Range 10  
at A (N.O. 10)  
1<sup>st</sup> (R.C. 514)  
R.O. 882  
7<sup>th</sup> (N.O. 1517)  
R.O. 1675

Corrus, all Posts in Mounds

I hereby certify that the above is a true record of said Survey, made by me on the 13<sup>th</sup> day of July, A.D. 1844

H. A. Wilcox  
Dist Sur. of Mo.

I have  
recor.  
the 9