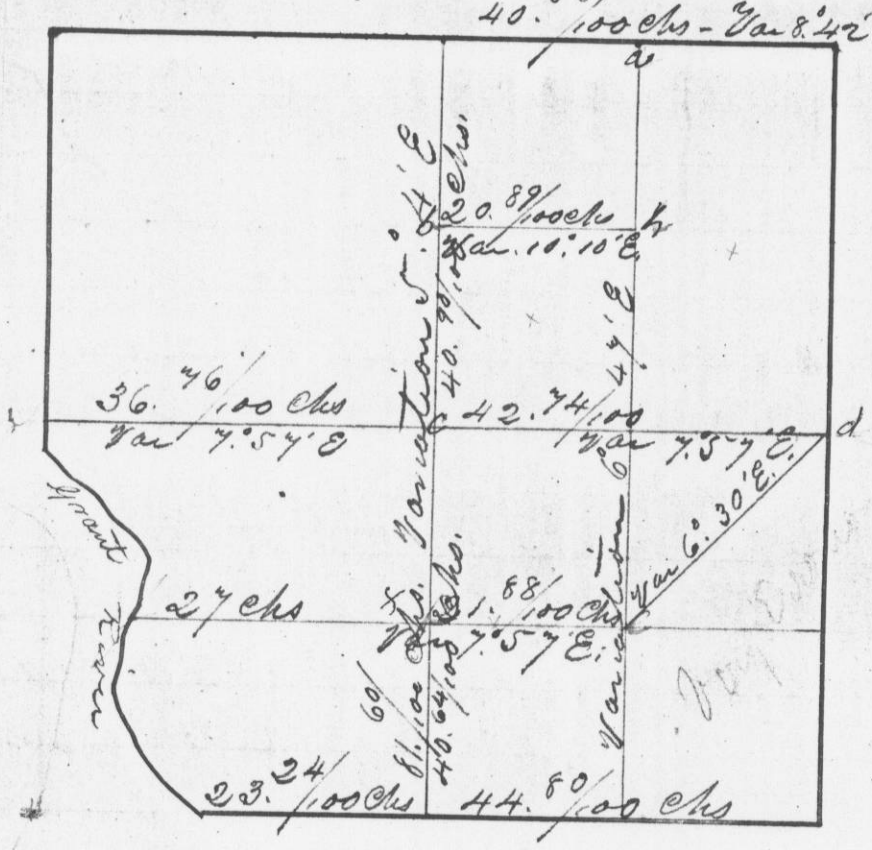


Murray of Survey made for Jas. G. Bull, of the E. 1/2 of N.E. 1/4
 in Iowa 4th S.E., S.W. of N.E. 1/4 and that half of the N.E. 1/4 of
 in N.E. 1/4 which lies N.W. of a line drawn from the
 E. to the S.W. corner of same - all in Sec 10 T 2 R 3 N.E.



21.87
 20.27
 2.5664
 2.432

1/4
 1/2
 3/4
 835
 124

- mounds E. at a Sugar 18 S 60 W 9 1/2 Buttermilk 6 S 30 W 12 6
- that the above " b W.D. 20 N 31 40 E 38 W.D. 20 S 62 W 10
- rod of said " c Br.O. 18 " 89 1/2 W 25 Br.O. 18 " 72 " 86
- 244 " d W.H.O. 17 " 46.40 E 111 Estab. by me
- H.A. Wilts " e B.D. 12 S 20 1/4 E 64 Br.O. 6 S 75 E 60
- of Survey of " f Br.O. 40 S 58 1/2 W 74 Elm 13 S 20 S 83
- Grant Co. " g J.T. 5 S 18.10 W 41 1/2 Br.O. 12 " 84 1/2 E 44
- " h W.Birch 10 " 62 W 91 Soft maple 40 S 57 E 154
- " i Willow 17 S 9 1/2 E 29 Willow 2 1/2 10 E 18

I hereby certify that the above
 are from records of said Survey made
 me on the 29th day of June A.D. 1844
 H.A. Wilts
 Dist. Sur. of Ia.