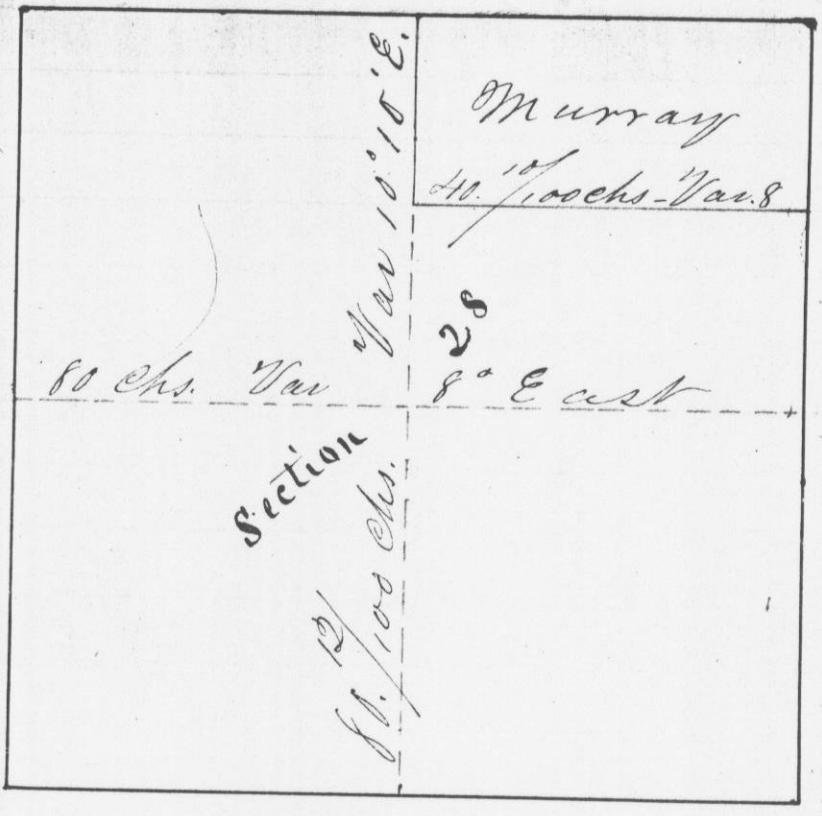


Survey made for William Murray of Survey made  
 the N. 1/2 of N.E. 1/4 of Sec. 28, in Town 4 N.E., S.W. 1/4  
 in Range 5 West of the 4th. P.M. in U.E. Mt. S.E. 1/4 which  
 lies to the S.W.



corners, all posts in mounds, at a Sec  
 I hereby certify that the above " to W.C.  
 is a true and correct record of said " e Br. S.  
 Survey, made June 20<sup>th</sup> 1844 " d W.C.  
 H. A. Wilts " e Br. S.  
 Dist Surveyor of " f Br. S.  
 Grant Co. Mo. " h J. T.  
 " J. W. Bir  
 " J. Willc  
 a true  
 by me on