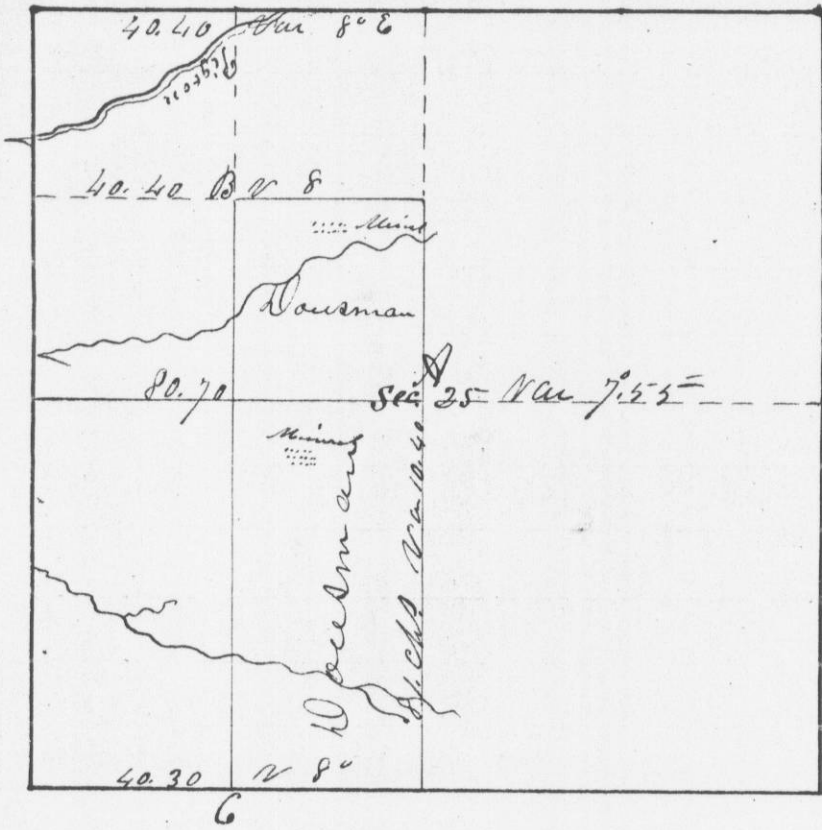
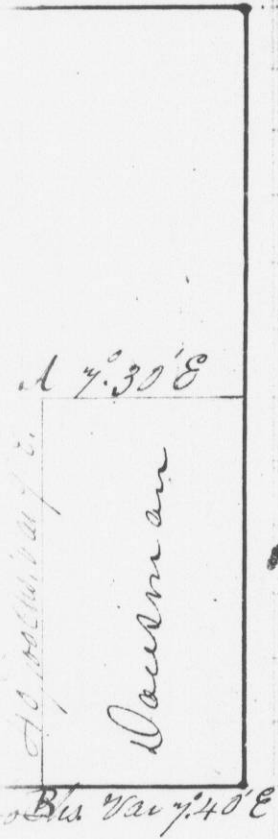


name of the

Survey made for Hercules L. Dausman of

5th N. Range 3 West the E. 1/2 of S.W. 1/4 of and the S.E. 1/4 of N.W. 1/4 of Sec 25
T. 20. S. in Town 4 N. Range 21 West of the 4th P.M. in G.C.



A 7.0 E 45
D. 7.0 W 33

above is a True
Survey, made
H.A. Wilts
Dist. Sur. of G.C. W.T.

at A Part cor { Sgm 12 S 28 E 71.26
 Bearings Sugar 16 N 18 W 4.8
 at B Part cor { N 615 S 39 E 76
 N Walnut 9 S 17 W 18
 at C Part cor { N 60 30 S 80 E 18
 N 60 20 S 50 W 37 23

I hereby certify that the above is a true
 record of said Survey made by me the 17th
 day of June 1844
 Saml. C. Wilts
 Dept Dist Surgo of Grand Co. W.T.