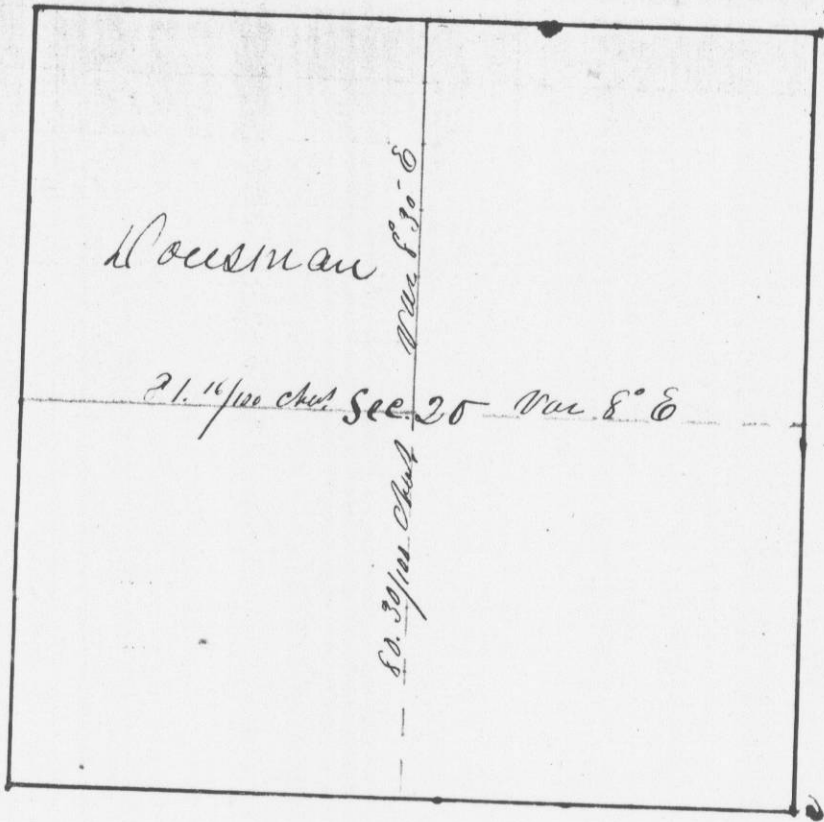


226

No. 339.

Survey made for Hercules S. Housman  
of the N. W. 1/4 of Section No. 20, in  
Town 5 N. in Range 2 W. of the  
4th P.M., Grant Co. W.T.



Center of Sect. Post Co. } W. Oak 20 in S 64° W 108 Lk.  
" 15 " S 88° W 120 "

I hereby certify that the above is a true  
recap of said made by me  
from the 11<sup>th</sup> 1844

Saml. C. Miller  
Capt. Dist. Surveyor  
of Grant Co. W.T.

At A P.  
Beams  
At B P.  
Beams  
I have  
records  
10 days

