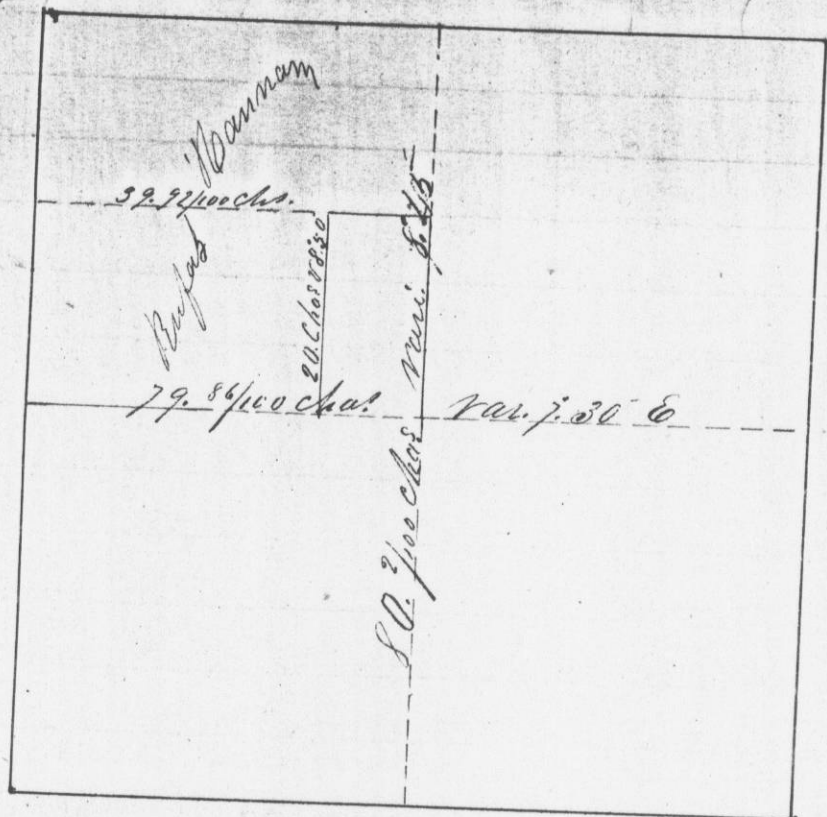


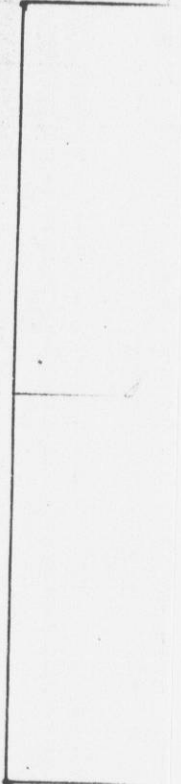
Survey made for Rufus Hannam of  
all of the N.W. 1/4 of Section 20. T. 1. N. R. 1. W.  
4<sup>th</sup> Mer. Except the E 1/2 of the S E 1/4 of said  
1/4 sect.



Cornel Post set in mounds  
I hereby certify that the above is  
a true flat and copy of the Minutes of  
said Survey made by me the 27<sup>th</sup> of  
April 1844

Saml. C. Miller  
Capt. Dist. Surgeon  
Quart. Co. M. I.

Survey of  
S Taylor  
of Section



Cornel  
I hereby  
and copy  
me the