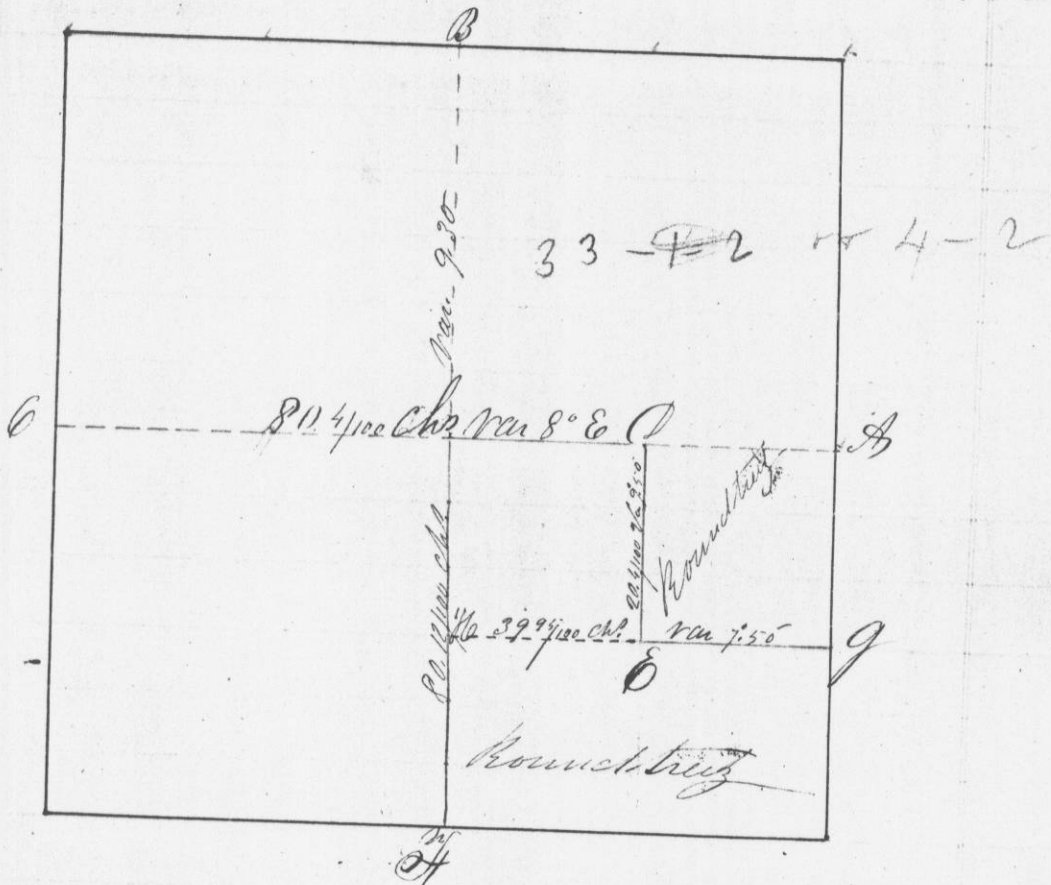


No. 330

Survey made for John W Rountree of the S 1/2 and N E 1/4 of the S E 1/4 of section 33 Town 1 S R 2 W 4 P. Mer.

Rountree  
1/2 of the N E  
to 1/4 P. Mer.



- At G Post Cor. W Oak 16 N 14 E 54 Sk?
- Bearings Sugar 12 S 59 W 67 "
- At C Post Cor. Lyme 15 N 41 E 16 "
- Bearings W Oak 13 S 28 E 14 1/2 "
- At D Post Cor. Lyme 14 S 85 W 32 "
- Bearings Fern 7 S 50 E 9 "

I hereby certify that the above is a true copy of the minutes of said survey made by me the 23<sup>d</sup> of April 1844

Saml. C. Miller  
Capt. Dist. Surgeon  
Quart Co W 34

Plc? 13  
" 11  
" 17  
3 "  
5 "  
" 25  
" 24  
True Copy of the  
23<sup>d</sup> of April 1844  
Saml. C. Miller  
Dist. Surgeon of  
A Co W. J.