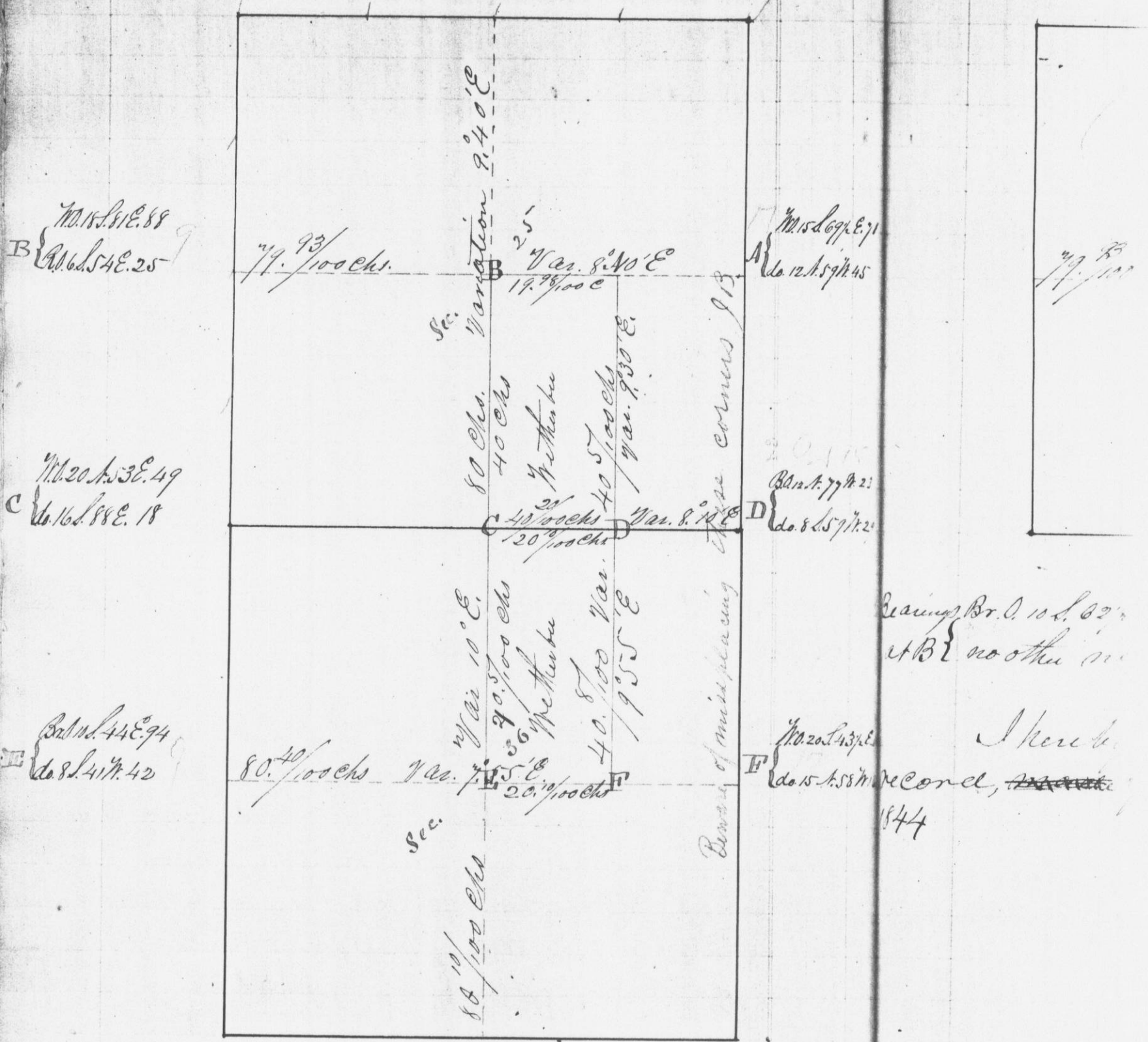


Survey made for Hiram Metherbe of the W 1/2 of the S.E. 1/4 of Sec. 25 and the W 1/2 of the N.E. 1/4 of Sec. 36, both in Town 4 N. in Range 5 W. of the 4th P.M.

Survey made S.E. 1/4 of Sec.



B
No. 15.31 E. 88
do. 6.54 E. 25

C
No. 20.33 E. 49
do. 16.88 E. 18

E
do. 11.44 E. 94
do. 8.41 N. 42

A
No. 15.69 E. 71
do. 12.15 N. 45

D
do. 8.57 N. 23
do. 8.57 N. 23

F
No. 20.13 N. 8
do. 15.15 N. record, ~~1844~~

I hereby certify that the above is a True record of said Survey, made Apr. 24, 1844.

H. A. Wiltee Dist. Sur. of G. C. M. S.