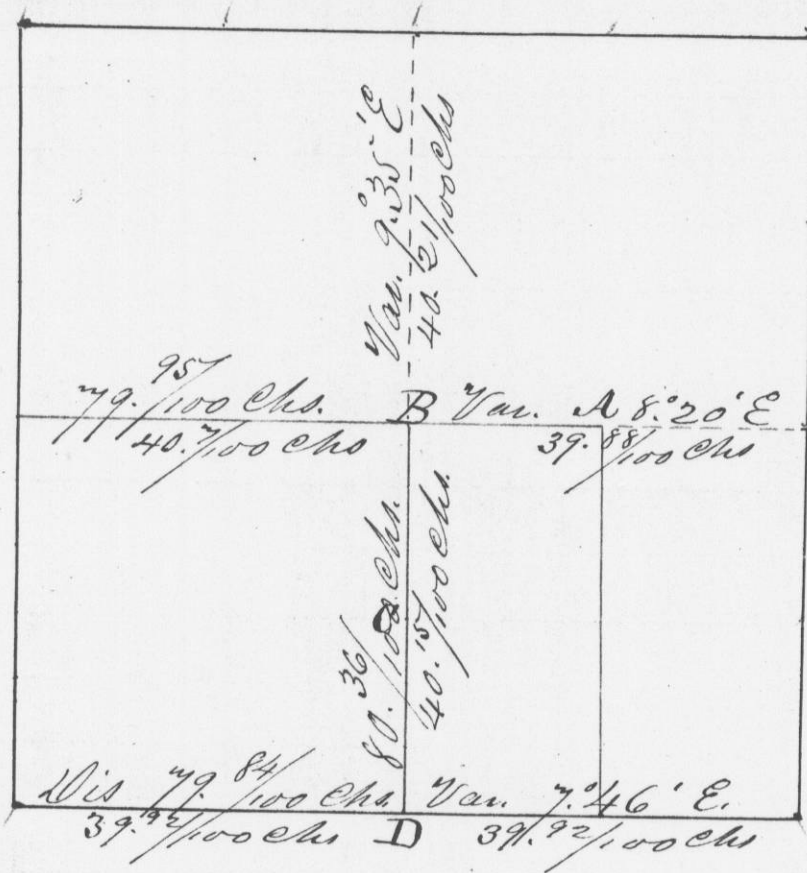
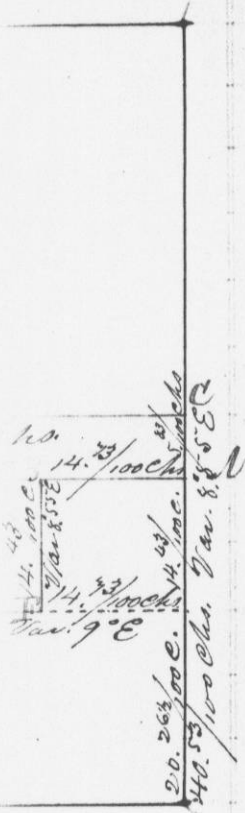


center of the N.W. 1/4  
1/4 of the S.E. 1/4  
N.T.; as shown

made for E. Karlsson and C. Selmon - Establish-  
ing 1/4 Post on South boundary at D - the centre at B -  
and corners at A and C, in Section 36 in Town 4  
Range 3, Grant Co. N.T., as represented in the follow-  
ing Plat.



Bearings B.D. 2 1/2 S. 88 1/4 E. 22  
at A. { do 2 1/2 N. 4.40 E. 19 1/2 } at B { Post in mound

Var at C - Post in m.

Bear. (Variation 7.46° E.)  
at D. { do 8 S. 14.5 N. 58.3 } Original bear-  
ings Destroyed

I here by certify that the above is a true record  
of said Survey, made Apr. 9th. 1844.

H. A. Wilton  
Dist. Sur. of Grant Co.  
N.T.

Elm 10 N. 39 1/2 E. 23  
Walnut 20 N. 65 E. 54  
a true record  
of March, A. D. '44.  
H. A. Wilton  
Dist. Sur. of Grant Co. N.T.