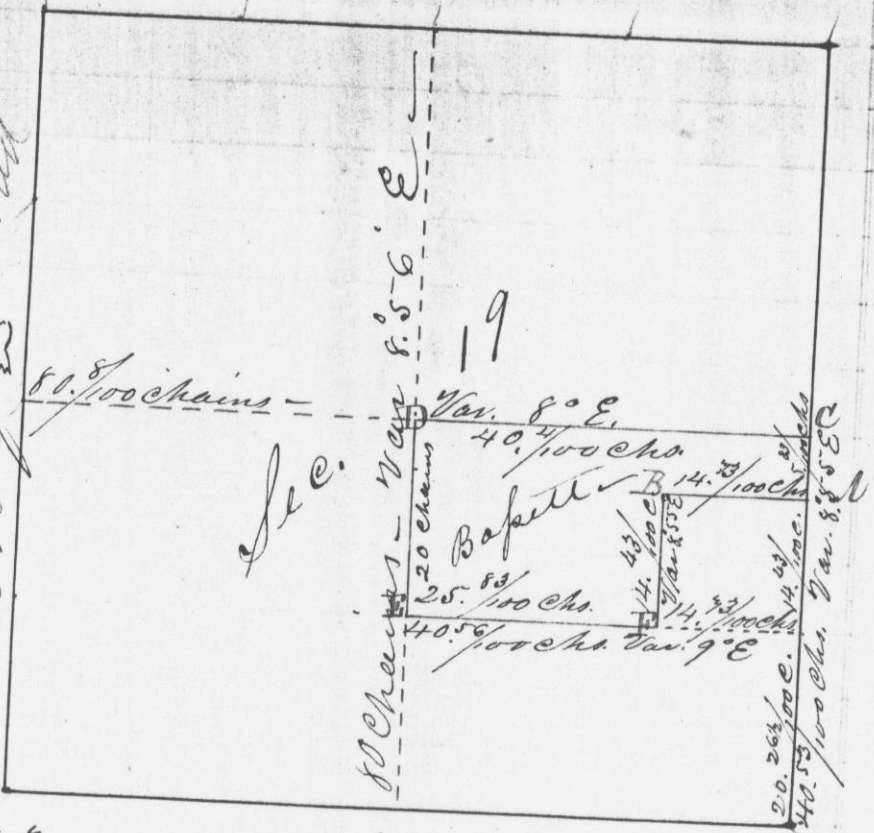


made for W. H. Bapett and S. W. M. Master of the N.W. 1/4

of the S.E. 1/4 and 20 acres of the N.E. 1/4 of the S.E. 1/4 of Sec. 19 in Town 4, Range 1, Grant Co. W. T.; as shown by the following Plat

Established bearings at the S.E. corner of sec. 19 Town 4 R. 1 - No. 20 at 38 1/2 N. 72 - 1/2 S. 19 1/2 E. 36. both of the above bearings were verified by the old survey.



Bearings at B.O. 8 S. 43 1/2 N. 74 1/2 Bearings Elm. 10 S. 44 1/2 N. 28 1/2 at A Lynn 10 S. 78 1/4 N. 83 1/2 at B W.O. 22 S. 47 E. 13 1/2 at C

do. do. B.O. 8 S. 89 1/2 N. 16 do. do. Lynn 5 S. 43 1/2 E. 99 " Elm 10 S. 39 1/2 N. 23 at D W.O. 6 S. 88 E. 57 " & B.O. 8 S. 53 1/4 E. 94 " F. Walnut 20 S. 65 E. 54

I hereby certify that the above is a true record of said Survey - made on the 23. day of March, A. D. '44

H. A. Wilton Dist. Sur. of W. T.

made for ... ing 1/4 Post ... and corner ... Range 3, Grant ... Plat.



Bearings B.O. 2 1/2 S. 8 ... at A. do 2 1/2 N. 4 ... near at C - B

I here by ... of said Survey