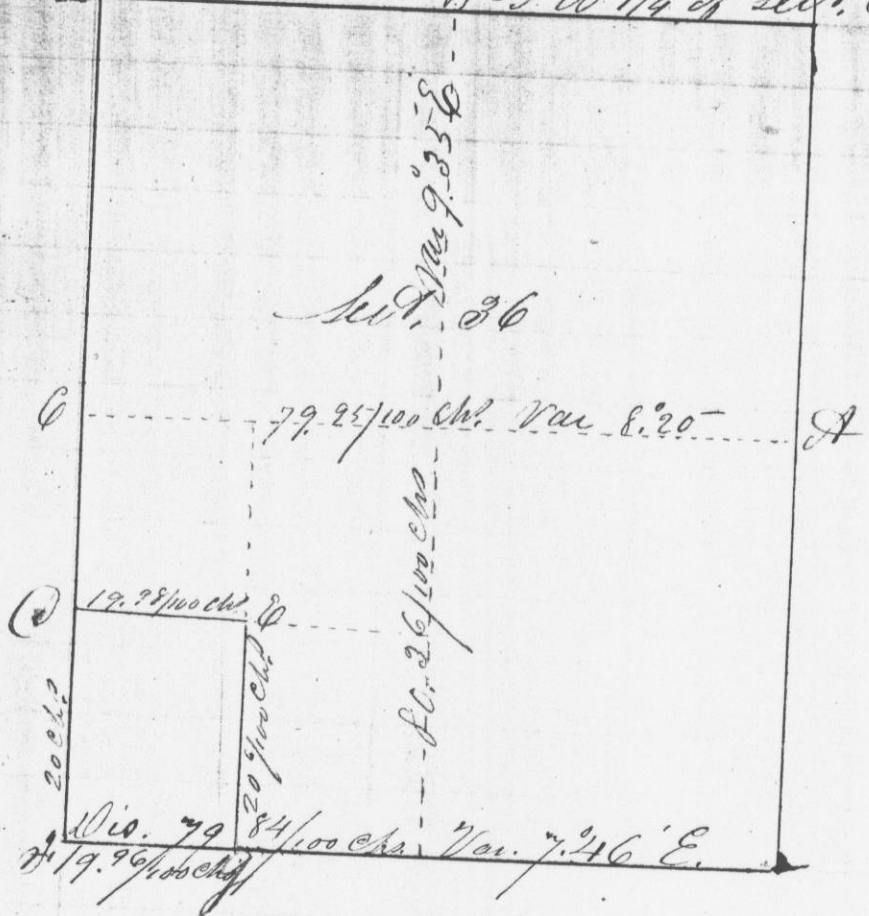


Survey made for Jns. Saughlin of the SW 1/4 of the
B SW 1/4 of Lot 36. P 4 N. R 32 W 4th Me



Account of said 1/4 sec all
Parts set in monument
I hereby certify that the above is a
true plat and copy of the minutes
of said survey made by me Nov 28th
day of February 1851 Jms. C. Wilton

Capt. Dist. Surveyor
of Grant Co. Mo.

S
6
D
41
10
7
1
1