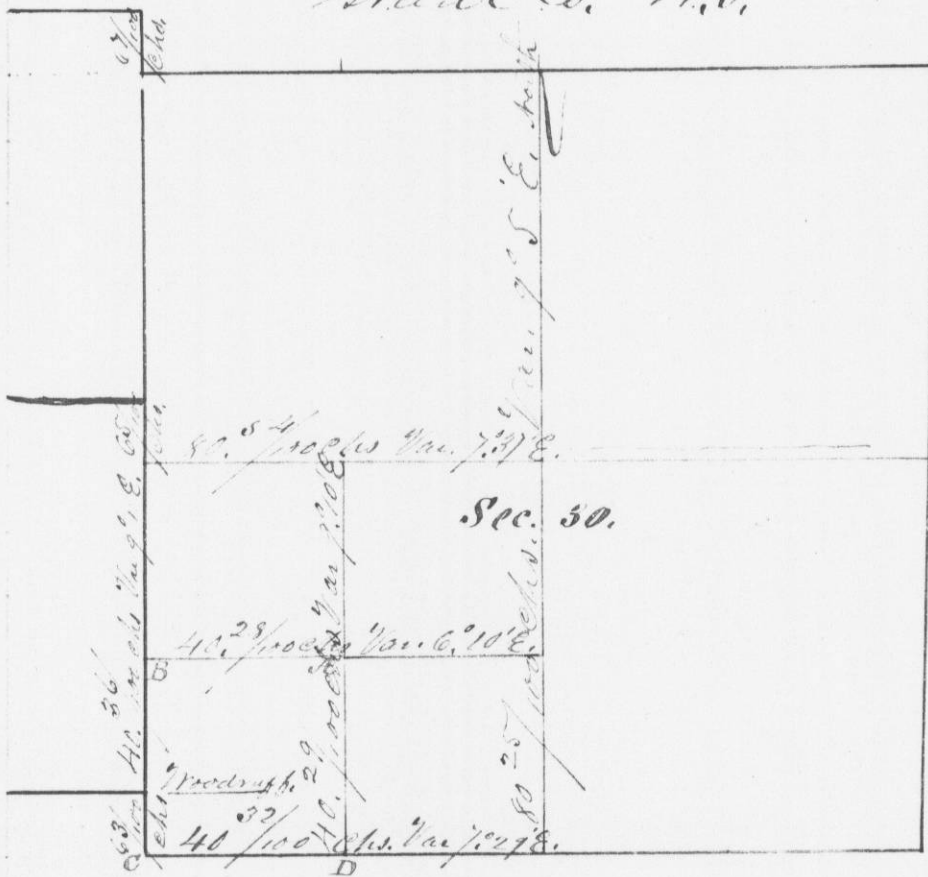


Survey No. 310.

197

Made for Julius Woodruff, of the S.W. 1/4 of S.W. 1/4 of Sec. 30, in Town 4 N., in Range 1 West of 4th R.M. in Grant Co. W.T.



S.W. 1/4 of S.W. 1/4 of 4th R.M. - in

10.7 S. 51 1/2 E. 56
 10.12 N. 74 1/2 E. 98
 10.12 S. 12 1/2 W. 188
 10.10 S. 38 1/2 W. 142 1/2
 above tract - north
 line is a true
 representation
 made by me on
 4
 H. A. Wittse
 Dist Surveyor
 Grant Co. W.T.

Beings Bro. 12 S. 12 1/2 W. 188
 at B. 10 S. 38 1/2 W. 142 1/2
 Bearings B.C. 11. 146 E. 69
 at B. 11. 15. 182 1/2 E. 53
 10.18 N. 27 E. 7 1/2
 10.16 S. 10 1/2 E. 35
 Above is a true and correct statement and
 representation of the minutes of said survey
 made by me on the 16th day of March A.D.
 1844.

H. A. Wittse
 Dist Surveyor
 of Grant Co. W.T.