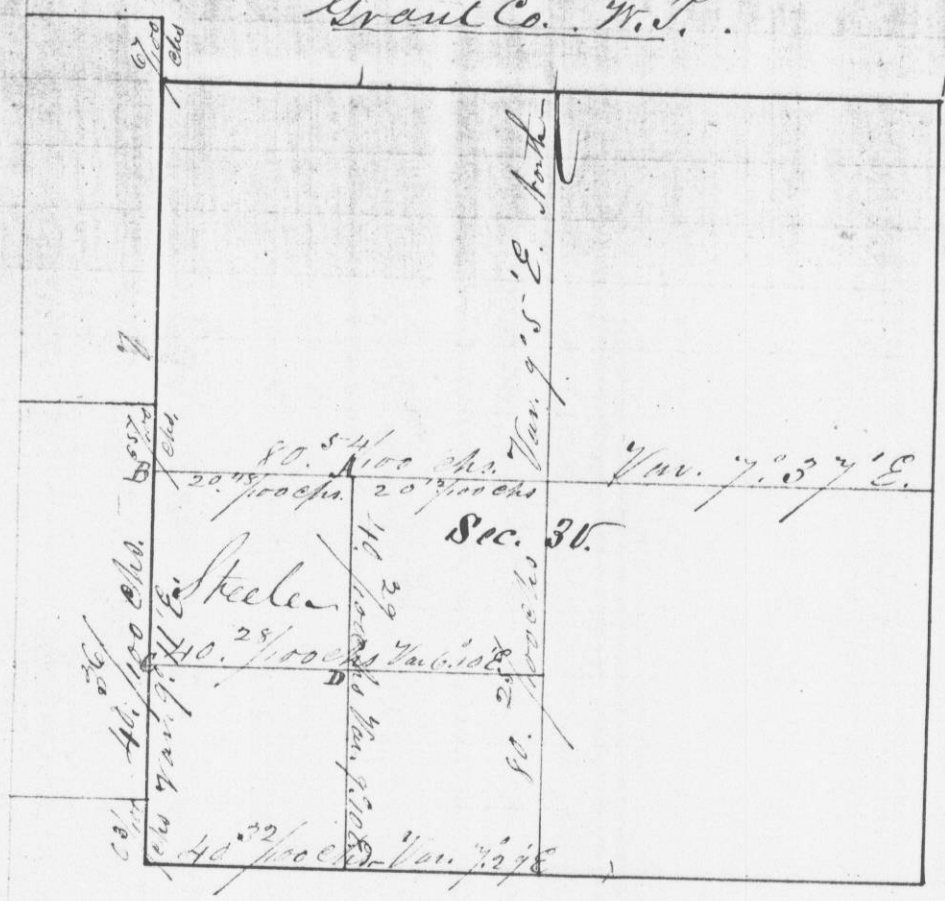


196

No. 307.

Survey made for Oscar Steele of the N.W. 1/4 of S.W. 1/4 of Sec. 30. Town 4 N. in Range 1 West of 4th P.M. in Grant Co. W.T.



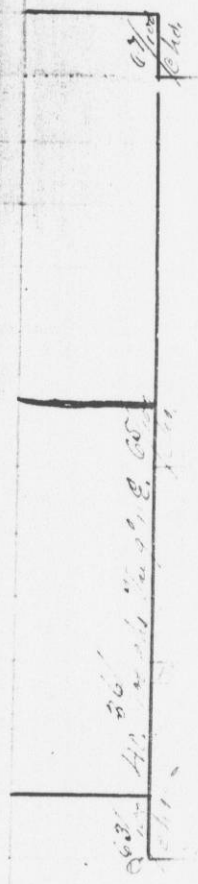
Bearings N.O. 25 A 28 35 E 5
 at A { B.O. 17 S 61 35 E 56
 Bearings B.O. 14 A 46 E 69
 at C { N.O. 15 A 82 1/2 E 53

Bearings N.O. 9 S 51 1/2 E 56
 at B { A.O. 12 A 74 40 E 98
 Bearings B.O. 12 S. 12 45 7/8 188
 at D { C.O. 10 S 38 7/8 142 1/2

No lines or blaza on the north end of above tract - north one corner.
 I hereby certify that the above is a true and correct statement and representation of the minutes of said survey made by me on the 16th day of March A.D. 1844

H.A. Wittse
 Dist. Surveyor
 of Grant Co. W.T.

Made for 1/4 of Sec. 30



Bearings B.O. 12 S. 12 45 7/8 188
 at D { C.O. 10 S 38 7/8 142 1/2
 Bearings L.O. 12 S. 12 45 7/8 188
 at D { C.O. 10 S 38 7/8 142 1/2
 1844